



**SEIWA**

**2010**

**NAVIGATING THE SEAS OF TOMORROW**

## ...still navigating the seas of tomorrow!!

Now more than ever, Seiwa's commitment to innovation and quality comes true with the new range introduced to celebrate our 25th anniversary.

25 years of excellence to design and build a range of stylish, smart, user friendly, powerful and innovative chart plotters and combo chartplotters/fishfinders, backed up by a complete range of integrated accessories to fit your boat with the most reliable and high performance products.

The large number of instrument inputs and outputs allow a wide range of combinations, thus making it possible to create an attractive, helm and navigation station thanks with built-in capability.

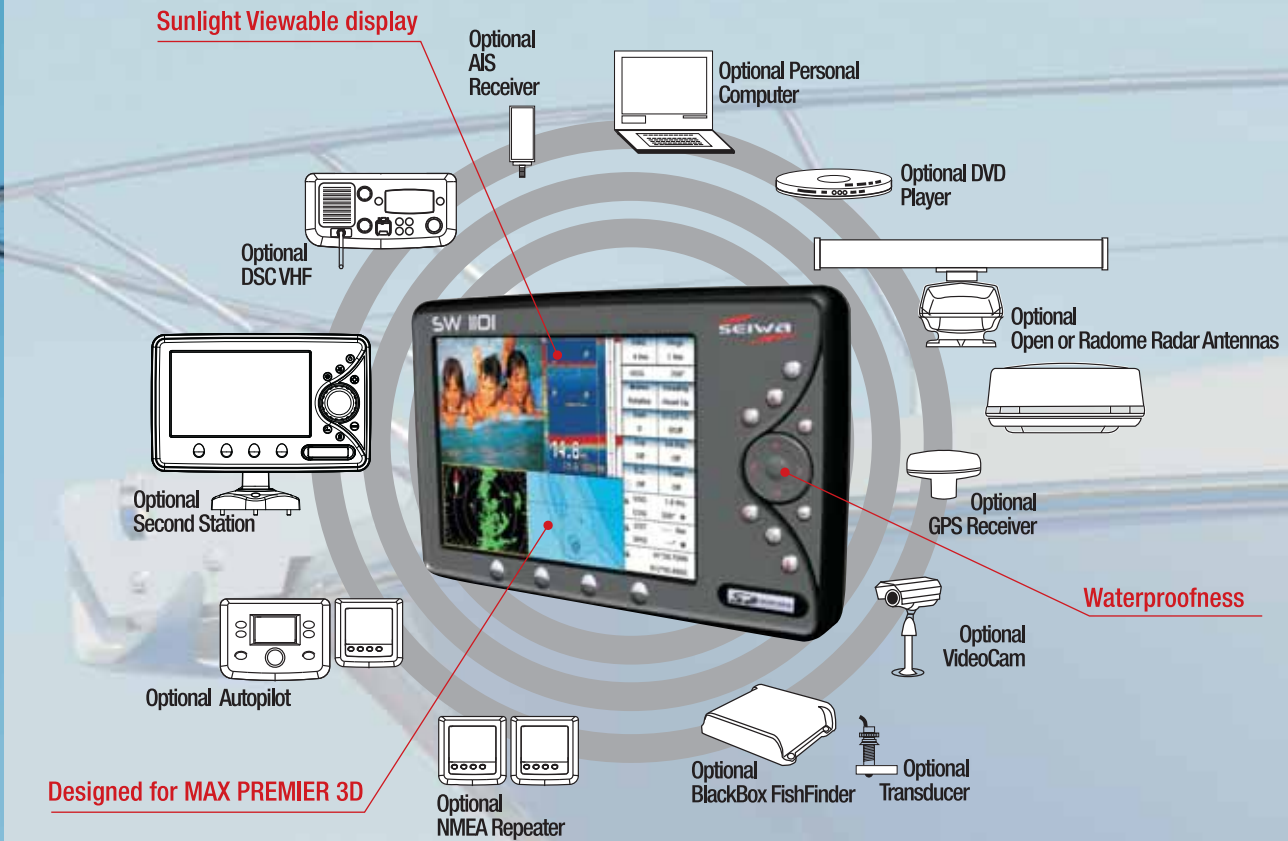
Because this is our mission: to create the electronics you need to sail safely and comfortably, no matter what your boat and destination is, no matter if you are at sea for pleasure or business.

And so, our chartplotters, fishfinders, radars, TV satellite antennas, autopilots, NMEA repeaters are all designed to offer you the best networking solutions coupled with superior warranty and technical support and service commitment all over the world. This catalogue gives you all the answers you need to help you make the best choice for your boat.

**Welcome to the next 25 years of Seiwa's navigation on the seas of tomorrow!!**



Maximum versatility and performance from your Seiva plotters and accessories



You put the boat, we put the right electronic equipment!

Suggested System

Whatever your need is, we have what it takes for all types of sailing yachts, as well as all types of power boats. Whether is a single station solution or tailor-made networked systems; whether you are cruising or weekend sailing, or if you race, there will always be the right combination of products to satisfy your needs.

Seiwa offers a wide range of radars, black box fish finder, GPS antenna and multi-station displays.

They can also be connected to autopilots and NMEA instruments, for the most complete package.

The following are suggestions of marine electronic systems layouts for sailboats and powerboats of various sizes.

As every boat and every boat owner is one of a kind, please refer to your local Seiwa dealer for the best advice on the most suitable solution for your needs.

### Powerboats Under 28'



Autopilot  
SW AP01



NMEA  
SW RP-03, RP-05, RP-07



Chartplotter/Fishfinder  
SW 501i



Black Box Fish Finder  
50/200

### Powerboats From 28' to 40'



Autopilot  
SW AP01



NMEA  
SW RP-03, RP-05, RP-07



Chartplotter/Fishfinder  
SW 501ci



Chartplotter/Radar/Fishfinder  
SW 701e



Black Box Fish Finder  
50/200



Radar  
Radome SWR 9

### Powerboats Over 40'



Autopilot  
SW AP03



NMEA  
SW RP-03, RP-05, RP-07



Chartplotter/Radar/Fishfinder  
MARLIN



Chartplotter/Radar/Fishfinder  
SW 1101



Black Box Fish Finder  
50/200



Radar  
Open SWR 10

You put the boat, we put the right electronic equipment!



Suggested System

Sailboats Under 30'



Autopilot  
SW AP01



NMEA  
SW RP-03, RP-05, RP-07



Chartplotter/Fishfinder  
SW 501e



Radar  
Radome SWR 1

Sailboats From 30' to 50'



Autopilot  
SW AP01



NMEA  
SW RP-03, RP-05, RP-07



Chartplotter/Radar/Fishfinder  
SW 701ce



Chartplotter/Fishfinder  
SW 501e



Radar  
Radome SWR 8

Sailboats Over 50'



Autopilot  
SW AP03



NMEA  
SW RP-03, RP-05, RP-07



Chartplotter/Radar/Fishfinder  
EXPLORER<sup>3</sup>



Chartplotter/Radar/Fishfinder  
SW 1101



Radar  
Radome SWR 9

Fishingboats Under 30'



Autopilot  
SW RA01



Chartplotter/Radar/Fishfinder  
EXPLORER<sup>3</sup>



Black Box Fish Finder  
50/200



Radar  
Radome SWR 9

Fishingboats Over 30'



Autopilot  
SW AP03



Chartplotter/Radar/Fishfinder  
MARLIN



Chartplotter/Radar/Fishfinder  
EXPLORER<sup>3</sup>



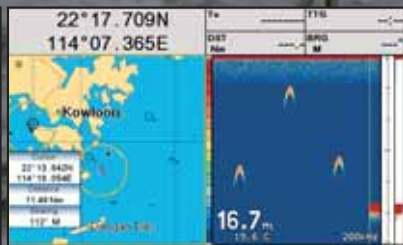
Black Box Fish Finder  
50/200



Radar  
Open SWR 10



Perspective view - Normal Palette



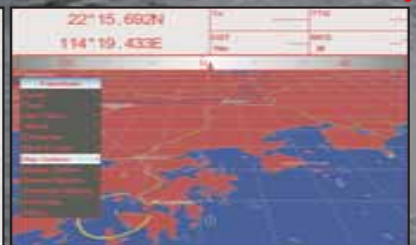
Chartplotter & Echosounder (FishFinder)



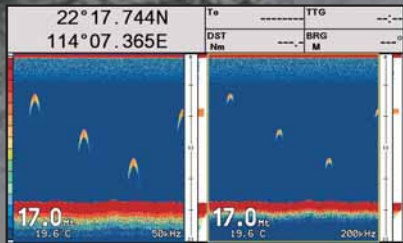
Nav Data



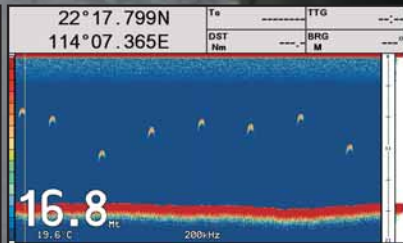
Gauges



Cartography - Night palette



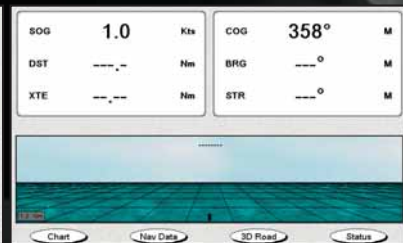
FishFinder Zoom



Echosounder (FishFinder) full screen



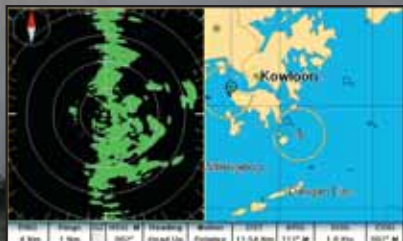
Wind data



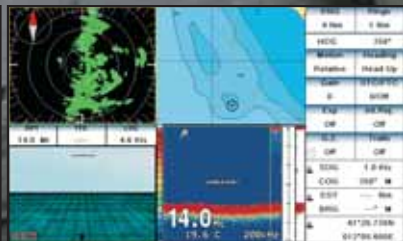
3D highway



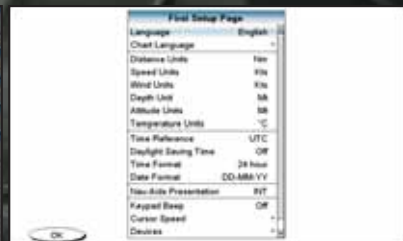
Easy menu



Chartplotter & Radar



Multi-function display



First Set up Page



Multi-function display - Video camera



Chart

## Chartplotter

- SW 1101
- SW 701i · SW 701e
- SW 501i · SW 501e
- Marlin
- Explorer3
- Seawave SD

Brand New, the SW1101 four function chart plotter (cartographical plotter, fishfinder, radar, navigation data) with new SVGA resolution (800x600 pixel), sunlight viewable LCD completes the range of flush mounted instruments which can be built-in on your dash board.

The SW 1101 multifunction chart plotter the ideal solution for boats fitted with latest generation panel instrumentation.

The SW 1101 features 2 video inputs, to control on-board areas and guarantee safety during navigation, as well as 1 video output for repeating all the information available wherever needed.

Completely waterproof, the SW 1101 features a powerful and user friendly state-of-the-art software, now updated with outstanding graphics and cutting edge functions such as "Grounding Alarm", "Route Checking", "Smooth Zoom", "Analog Gauge", "Wind Data" and many others.

Jeppesen MAX charts offer unmatched quality, readability, and preciseness of data.

# SW 1101

- Plotter**
- + FishFinder (optional)**
- + Radar (optional)**
- Bracket and Flush mountable**
- Video input**

Split the screen in 2 or 4 window combination

Intuitive interface puts you in command

10.4" SVGA 800x600 Sunlight Viewable display





Chartplotter 4 functions



Chartplotter - FishFinder



Chartplotter - Radar



Chartplotter Cartography - Night palette

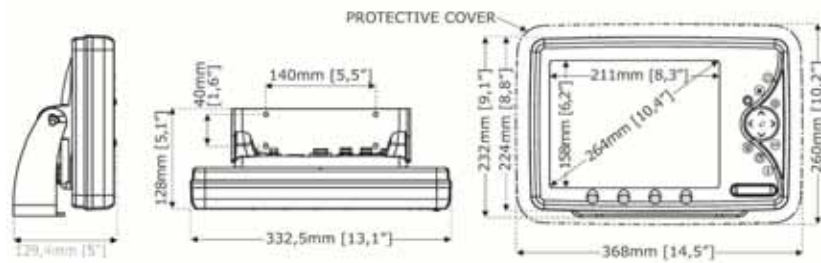


Chartplotter

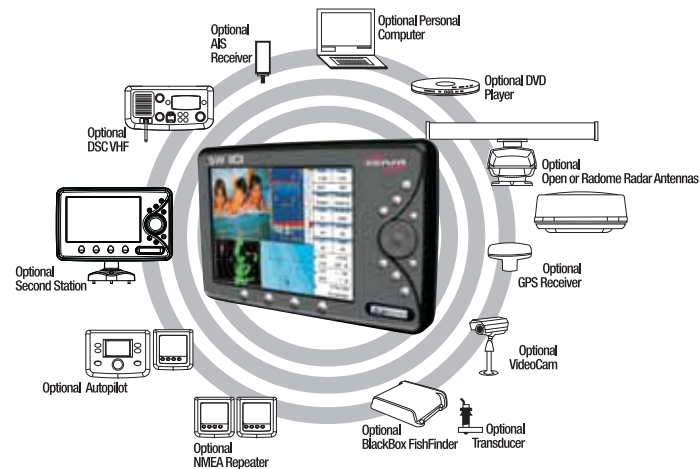


Chartplotter - Satellite Imagery

SW 1101



POWERBOATS FROM 28' TO 40'



SAILBOATS OVER 50'

The most compact and powerful multifunction sunlight viewable ( WVGA display) chartplotter, featuring a unique sleek design and unsurpassed quality. Completely waterproof, the SW 701 series can be flush mounted or bracket mounted, and come in two versions: built in GPS antenna, and External GPS antenna. The new revolutionary quick disconnect adjustable bracket can be both tilted and rotated, matching all possible positioning and installation needs, and offering the easiest removal solution. These new outstanding chartplotters can be also transformed into a fishfinder and a radar when coupled with the BBFF or one of the SWR series radar scanners. Jeppesen MAX charts offer unmatched quality, readability, and preciseness of data. User friendly state-of-the-art software has been now updated with outstanding graphics and cutting edge functions such as "Grounding Alarm", " Route Checking", " Smooth Zoom", and many others.

## SW 701i · SW 701e

**Plotter**  
**+ FishFinder (optional)**  
**+ Radar (optional)**  
**Bracket and Flush mountable**  
**Video input**



SunLight Viewable



Waterproof



Warranty Years



Designed by Jeppesen Marine

Split the screen in 2 or 4 window combination

Intuitive interface puts you in command

7" WVGA Sunlight Viewable display





**SW 70ii**  
**SW 70ie**

Chartplotter FishFinder

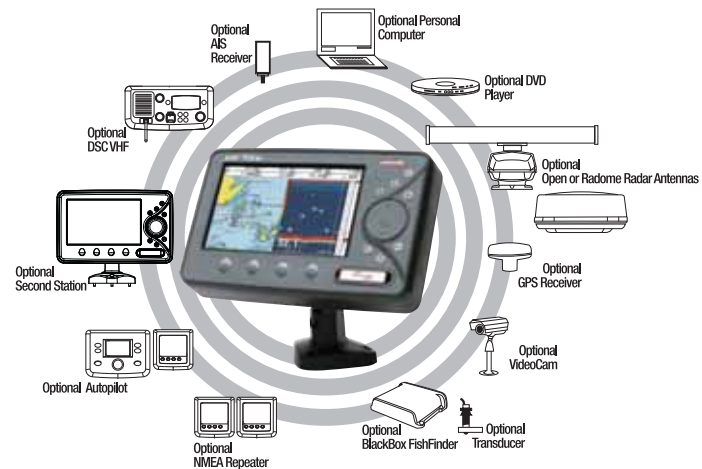
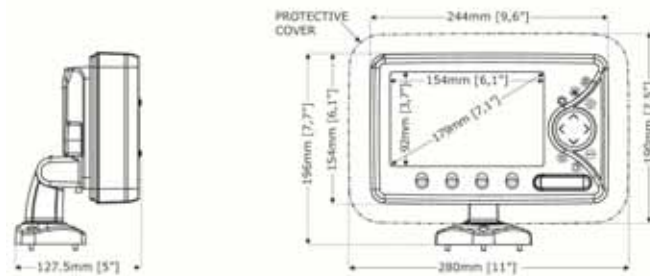
Chartplotter Radar

FisFinder

Chartplotter - Satellite Imagery

Chartplotter Cartography - Night palette

Chartplotter



A compact, innovative, well-lit, sunlight viewable chartplotter, featuring a unique sleek design and unsurpassed quality.

Completely waterproof, the SW 501 series can be flush mounted or bracket mounted, and come in two versions: built in GPS antenna, and External GPS antenna.

The new revolutionary quick disconnect adjustable bracket can be both tilted and rotated, matching all possible positioning and installation needs, and offering the easiest removal solution.

These new outstanding chartplotters can be also transformed into a fishfinder when coupled with the BBFF. Jeppesen MAX charts offer unmatched quality, readability, and preciseness of data.

User friendly state-of-the-art software has been now updated with outstanding graphics and cutting edge functions such as "Grounding Alarm", "Route Checking", "Smooth Zoom", and many others.

## SW 501i · SW 501e

**Plotter**  
**+ FishFinder (optional)**  
**Bracket and Flush mountable**



SunLight Viewable



Waterproof



Warranty Years



Designed by Jeppesen Marine

Intuitive interface puts you  
in command

Multifunction

5" QVGA  
Sunlight Viewable display





Chartplotter SW 500e

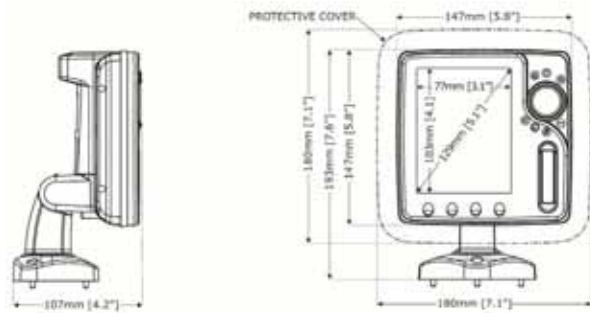
Chartplotter SW 500i

FishFinder

Chartplotter Fishfinder

Chartplotter - Satellite Imagery

SW 500i  
SW 500e



POWERBOATS UNDER 28'



SAILBOATS UNDER 30'



# Marlin

The Marlin Seiva is a multifunction display that can easily be turned into a combination of GPS Chartplotter, Fishfinder, Radar (optional Radar and Fishfinder sensor are available)  
 The Marlin features 2 video inputs, to control on-board areas and guarantee safety during navigation, as well as 1 video output for repeating all the information available wherever needed.

- Plotter**
- + FishFinder (optional)**
- + Radar (optional)**
- Bracket and Flush mountable**
- Video input**
- Video output**

15" XGA 1024x768  
 Sunlight Viewable display

Split the screen in 2 or 4  
 window combination

Multifunction

User Friendly



SunLight Viewable



Waterproof



2 Warranty Years



Designed by Jeppesen Marine



Chartplotter - Satellite Imagery



Chartplotter - FishFinder



FishFinder

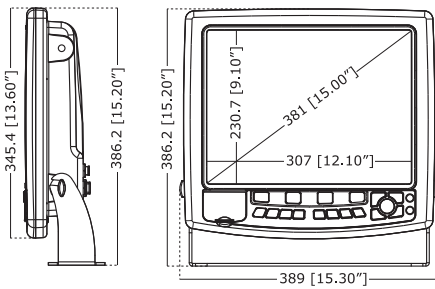


Chartplotter FishFinder Radar Video



Chartplotter - Radar

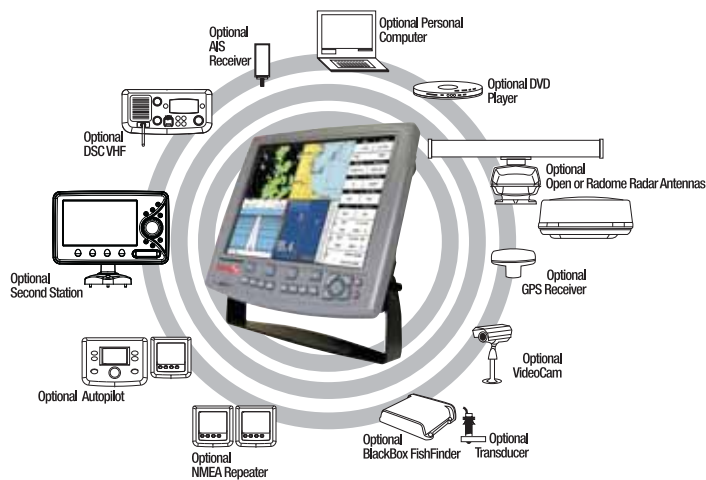
**Marlin**



**POWERBOATS OVER 40'**



**SAILBOATS OVER 50'**

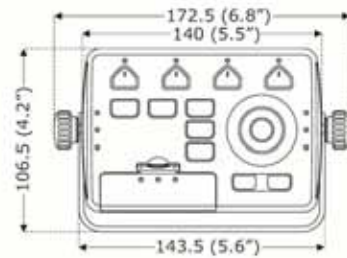
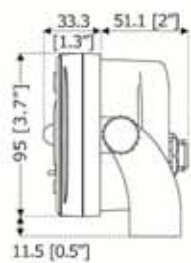


The EXPLORER CUBE is yet another improvement of the most reliable and affordable controller in the world. It now features a 400Mhz microprocessor, and selectable resolution up to 1024x768



## Explorer 3

- Plotter
- + FishFinder (optional)
- + Radar (optional)
- Bracket and Flush mountable
- Video output



Designed by Jeppesen Marine



The new Seawave is ruggedly built to work smoothly in extreme conditions; the exclusive secure digital system allows unlimited and easy data storage.

The new Seawave is a professional product for sea professionals. The tried and tested, 12", multifunction chartplotter, revised with the new SD for data storage features a new, well-lit display, and maintains its sturdy, metal casing. Operates as radar and fish finder, too, when coupled with one of the SWR series radar scanners and Fishfinder Blackbox. MAX charts offer unmatched quality, readability and preciseness of data.

User friendly state-of-the-art software has been now updated with outstanding graphics and cutting edge functions such as "Grounding Alarm", "Route Checking", "Smooth Zoom" and many others.

## Seawave SD

- Plotter**
- + FishFinder (optional)**
- + Radar (optional)**
- Bracket and Flush mountable**
- Video input**
- Video output**



SunLight Viewable



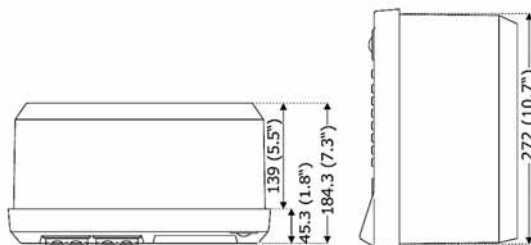
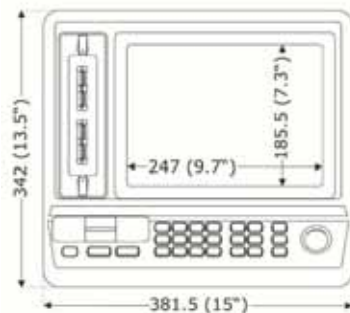
Waterproof



Warranty Years



Designed by Jeppesen Marine



Maximum versatility and performance from your Seiwa plotters



Seiwa Today

#### **SEIWA today**

Seiwa's network of distributors covers all the most active markets worldwide, but more are under development as Seiwa is always positive and responding to new opportunities in other parts of the world.

All our distributors around the world offer both quality customer support and expert advice, and more importantly share with us in the same care and commitment to Seiwa customers, activities, and pride in our products.

Check on the web site [www.seiwa-marine.com](http://www.seiwa-marine.com) the list of all Seiwa distributors world wide. Or to learn about the technical specifications that make Seiwa products one of the most appreciated and used ranges in the world.

#### **SEIWA and the future**

Seiwa's main target is to be a trend setter in the field of technology and product quality with an uncompromising attitude toward customer satisfaction.

The future activities of Seiwa will be aimed towards expanding our worldmarket coverage not only with our present range of products, but also with new technology and applications, making navigation even more pleasurable and more fun!



[seiwa-marine.com](http://seiwa-marine.com)  
[seiwamarine.eu](http://seiwamarine.eu)

## Fishfinder

- SW 701ce combo
- SW 701ci combo
- SW 501ce combo
- SW 501ci combo
- BBFF

## SW 701 combo

**Plotter  
+ FishFinder  
+ Radar (optional)  
Bracket and Flush mountable  
Video input**



SunLight Viewable



Waterproof



Warranty Years



Designed by Jeppesen Marine

The most compact and powerful multifunction chartplotter/fishfinder with integrated dual frequency fishfinder 600 Wrms 50/200 kHz. It has now exceptionally enhanced its features and performance with the high precision revealed on high-definition 256-color daylight display. ADSP (Advanced Digital Signal Processing) and underwater sound propagation physical modeling improves signal sensitivity and noise discrimination providing faster and reliable bottom acquisition and tracking. Automatic noise reduction automatically adjusts operating parameter balancing optimal noise rejection with maximum signal sensitivity in order to improve target discrimination performances with dynamic cancellation of surface noise.

Completely waterproof, the SW 701 series can be flush mounted or bracket mounted, and come in two versions: built in GPS antenna, and External GPS antenna.

The SW 701 combo serie works with Xid Airmar transducers, directly connected on the connector on the rear panel of the combo. The SW 701 combo units can also be transformed into a radar when coupled with one of the SWR series radar scanners.

Jeppesen MAX charts offer unmatched quality, readability, and preciseness of data.

User friendly state-of-the-art software has been now updated with outstanding graphics and cutting edge functions such as "Grounding Alarm", "Route Checking", "Smooth Zoom", and many others.

Split the screen in 2, or 4 window combination

Intuitive interface puts you in command

7" WVGA Sunlight Viewable display





Chartplotter · FishFinder

FishFinder

Chartplotter

Video · FishFinder · Radar · Chartplotter

Radar · Chartplotter

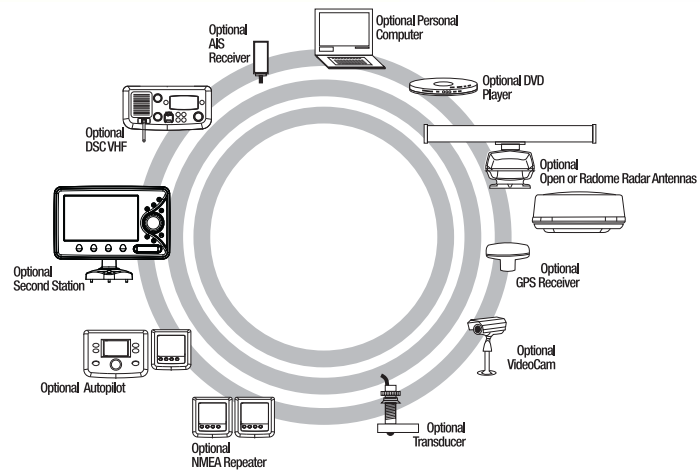
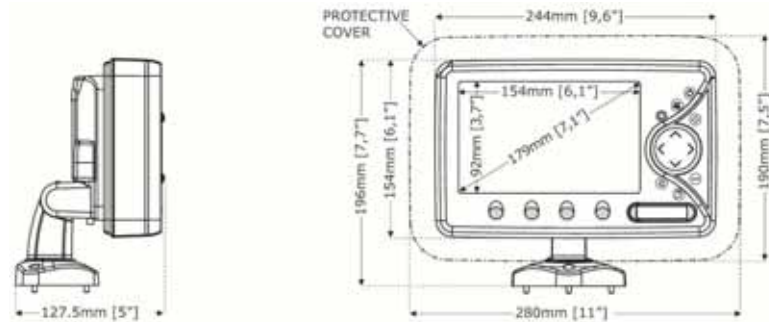
SW 701ci  
SW 701ce



POWERBOATS FROM 28' TO 40'




SAILBOATS FROM 30' TO 50'






# SW 501 combo

A compact, innovative, well-lit, sunlight viewable chartplotter/fishfinder, featuring a unique sleek design and unsurpassed quality with integrated dual frequency fishfinder 600 Wrms 50/200 kHz. It has now exceptionally enhanced its features and performance with the high precision revealed on high-definition 256-color daylight display. ADSP (Advanced Digital Signal Processing) and underwater sound propagation physical modelling improves signal sensitivity and noise discrimination providing faster and reliable bottom acquisition and tracking. Automatic noise reduction automatically adjusts operating parameter balancing optimal noise rejection with maximum signal sensitivity in order to improve target discrimination performances with dynamic cancellation of surface noise. The SW 501 combo series feature can be flush mounted or bracket mounted. The new revolutionary quick disconnect adjustable bracket can be both tilted and rotated, matching all possible positioning and installation needs, and offering the easiest removal solution. The SW 501 combo series works with Xid Airmar transducers directly connected on the connector on the rear panel of the combo Completely waterproof, the SW 500 combo series come in two versions: built in GPS antenna, and External GPS antenna. Jeppesen MAX charts offer unmatched quality, readability, and preciseness of data. User friendly state-of-the-art software has been now updated with outstanding graphics and cutting edge functions such as "Grounding Alarm", "Route Checking", "Smooth Zoom", and many others.

**Plotter  
+ FishFinder  
Bracket and Flush mountable**

-   
SEIVA

---

-   
SunLight Viewable
-   
Waterproof
-   
2  
Warranty Years
-   
C-MAP  
by Jeppesen  
Designed by Jeppesen Marine

Intuitive interface puts you in command

Multifunction

5" QVGA Sunlight Viewable display





Chartplotter / FishFinder

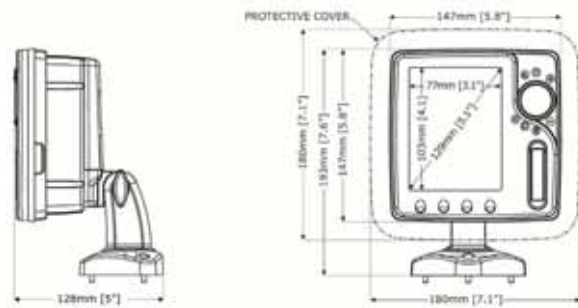
Chartplotter Cartography - Night palette

FishFinder - Dual Frequency

Chartplotter - Satellite Imagery

Chartplotter

SW 501ci  
SW 501ce



POWERBOATS UNDER 28'




SAILBOATS UNDER 30'



**New Black Box**

The BBFF Black Box has been specially designed to be used with any of the multifunction chart plotter. The double fishing or cruising function and double 50/200 khz frequency 500/1000 W rms guarantee the best solution for use at all times. It has now exceptionally enhanced its features and performance with the high precision revealed on high-definition 256-color daylight display, ADSP (Advanced Digital Signal Processing) and underwater sound propagation physical modeling improves signal sensitivity and noise discrimination providing faster and reliable bottom acquisition and tracking.

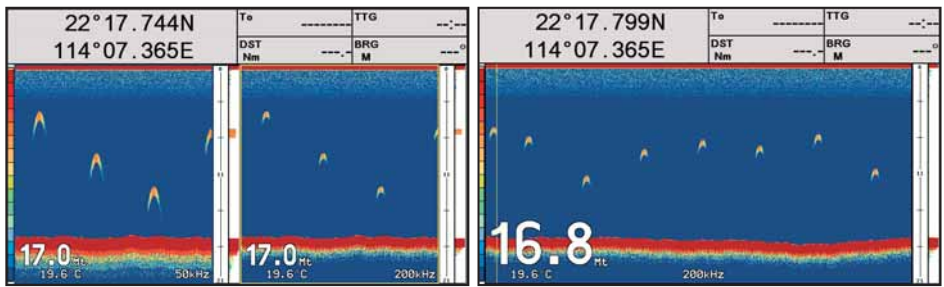
Automatic noise reduction automatically adjusts operating parameter balancing optimal noise rejection with maximum signal sensitivity in order to improve target discrimination performances with dynamic cancellation of surface noise.

Can be coupled with various kinds of plastic stern thru hull transducers, or in hull transducers, or bronze thru hull transducers. The BBFF works with  Airmar transducers

# BB FF 50/200 MK-II

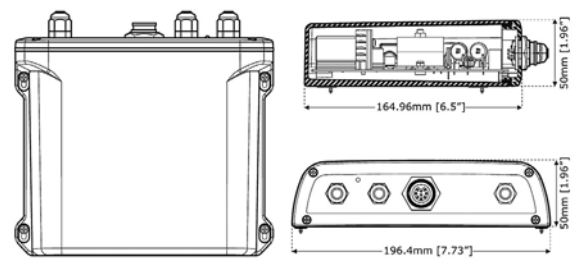


OPTIONAL TRANSDUCER



echosounder dual frequency

echosounder single frequency



## Accessories

- Autopilot Series
- Data Repeater
- Radar Scanners
- GPS Antenna
- Satellite TV Antenna

Having sophisticated navigation systems at your disposal without being able to count on a self-governing instrument means not giving substance to your on-board electronics installation. Both for powerful motor yachts and slender sailing boats, complex work crafts and fast daily-cruisers, autopilots are the most used - and welcomed - instrument used during navigation. Seiwa offers a range of Autopilots which guarantees the best solution for each type of boat.

Data repeater, Speed and Depth digital repeater  
 Large, 4 digit LCD display,  
 5 levels of backlight with external  
 backlight control  
 2 years of warranty  
 Working with any Seiwa  
 Chartplotter



## SW AP Autopilot series

## Data Repeater

SW AP01 - Autopilot  
 SW AP03 - Autopilot



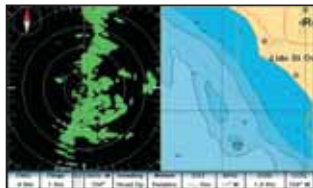
SW RP03 - NMEA Data Repeater  
 SW RP05 - Depth  
 SW RP07 - Speed



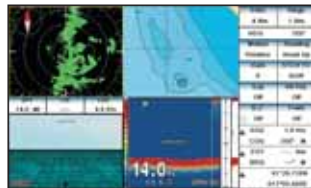


The difference between an integrated, on-board system and a simple, stand alone instrument is that the former makes it possible to connect up to the main on-board peripheral devices and increase their functions. Seiva offers a 5 model range of radars, from the compact Radome 2 Kw 24Nm ideal for RIBs and sailboats, to the Open 4kw 48 Nm models, ideal for pleasure boating and professional motor yachts. Open array models are used when maximum target resolution is necessary. Featuring greater capacity and lower horizontal angles, they are able to separate and make out very close targets  
Compatible with all the chart plotters and combo units, excluding the SW 500/501 series

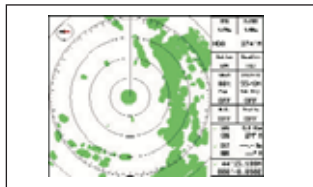
## SWR series Radar Scanners



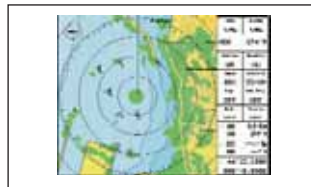
cartography and radar split screen



radar, chart, 3D road and echosounder



radar full page



radar overlay



### Radar Scanners:

- SWR 1
- SWR 8
- SWR 9
- SWR 10 - 3,5'
- SWR 10 - 4,5'



Waterproof

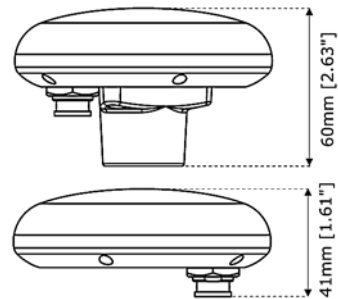
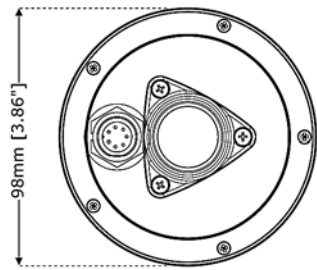


Warranty Years

Smart and compact DGPS WAAS/EGNOS MSAS, satellite differential receiver antenna  
16 channels, accuracy better than three meters (by decoding GPS correction signal)  
Standard thread 1"x14 or flush mount  
IP67  
working with any Seiva Chartplotter



## GPS Antenna



Waterproof



Warranty Years





The new full range of satellite Seiva TV SAT antennas guarantees high performance and high quality to onboard entertainment. They are extremely compact, and light in order to be installed also on small and medium vessels. The high tracking speed is obtained with a mathematic algorithm combined with an extremely precise signal tracking, providing uninterrupted satellite television reception even in very rough sea condition. Finally, for the first time a satellite antenna comes with a user friendly and semi automatic programming mode.

## Satellite TV antenna

### SW SAT SATELLITE TV ANTENNAS

SW SAT 71S  
SW SAT 61  
SW SAT 55  
SW SAT 41S  
SW SAT 41  
SW SAT 39S  
SW SAT 39/3  
SW SAT 39



Waterproof



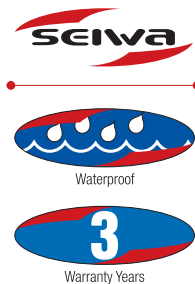
Warranty Years



[seiva-marine.com](http://seiva-marine.com)  
[seiwamarine.eu](http://seiwamarine.eu)

RT-MOB is a Real Time Man Overboard System that consists of a base station and wireless tags worn by crew members, family or pets. RT-MOB can be used as a stand alone system or integrated with GPS Tracking Service and RT-SAT, all integrated into a Seiwa network.

RT-MOB (Real Time – Man Over Board) is a radio-frequency high-tech product able to signal to the crew, in real time, a man over board alarm.  
3 security level



## Safety System RT-MOB

### 1 - Sensors able to detect sodium ions

The alarm sounds and lights as soon as the tag sensors get into contact with the salt water, they send out a man over board alarm with the consequent activation of the siren on board.

### 2 - Out of range

The automatic search mode detects the presence of the transmission signal every 3 seconds. After 3 failed attempts, the alarm of the boat will be activated .

### 3 - Panic Alarm

The tag has a button to press in case of danger to activate the alarm.

RT-MOB INCLUDES GPS tracking device.

It's able to fix the real geographical point where the Alarm is activated. It can be connected to chartplotters.

#### Technical Specifications:

Power Supply:	12 Vdc - 220 Vac
Man over board Alarm light and acoustic signal:	yes
Low battery signal:	yes
Signal for out of range RT-MOB:	yes
RT-MOB Signal Panic Alert	
Auxiliary exits:	2 contacts – 5 A n.o.
Power supply tag:	2 batteries AAA 1,5 volts
LED for status feedback:	yes
“Panic alert ” S.O.S. button:	yes
Up to max. 16 tags for each central station	
IMQ certified according to :	EN 300 220-3 EN 301489-3 EN 60950- 1 EN 60329 EN 60 032-2



RT-SAT is capable to send the alarm activated by RT-MOB, it transmits the position of the boat when the alarm is activated to **the satellite control center**, through LEOSAR system, with a minimal set of information about the subscriber and the boat. This information will allow the operator to contact the ship immediately.

If the emergency is confirmed or with no reply, the control center operator will send an emergency signal to the coast guard with the coordinates of the boat. The Coast Guard will then attempt to contact the boat by VHF and will arrange a rescue operation if required.

**A manual reset button** allows to disable the alert message.

The **Satellite control center service** is provided 24/7 in several European languages: Italian, Spanish, French and German (from the Milan headquarters) Czech, Slovak, Polish and Russian (from the Prague headquarters) Hungarian (from the Budapest headquarters) and English.

**Automatic Locating service:**

automatic location messages is sent by the RT-SAT (two per day with a standard configuration)

**Post-Theft service:**

localization of the boat whether a theft occurs (customer activated by calling the Satellite control center 24 /7) "Boat Alarm" is a push button installed on the ship.

It's a further service connected on RT-SAT.

In a general emergency ( piracy, medical problems...) the crew will able to send a boat alert to the sat control center that will receive an alarm code different from RT-MOB's.

The operator will contact the ship immediately and if the ship confirms the real emergency, the control center operator will send a generic emergency signal to the coast guard with the coordinates of the boat.

## Safety System RT-MOB



Maximum versatility and performance from your Seiva plotters

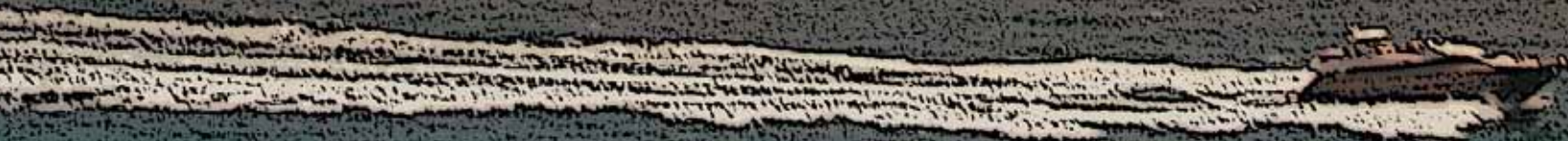


Technical  
Specifications



# Technical Specifications

---





MARLIN



SW 1101



SW 701i - SW 701e



SW 701ci - SW 701ce



SW 501i - SW 501e



SW 501ci - SW 501ce



EXPLORER CUBE



SEAWAVE

DISPLAY TYPE	TFT transmissive LCD (active area 15")	Sun Light Viewable Color LCD (active area 10.4")	Sun Light Viewable Color LCD (active area 7" wide)	Sun Light Viewable Color LCD (active area 7" wide)	Sun Light Viewable Color LCD (active area 5")	Sun Light Viewable Color LCD (active area 5")	N	TFT transmissive LCD (active area 12.1")
SCREEN SIZE w x h (mm & Inch)	W 307 [12.10"] H 230.7 [9.10"]	W 211.2 [8.3"] H 158.4 [6.2"]	W 152.4 [6"] H 91.4 [3.6"]	W 152.4 [6"] H 91.4 [3.6"]	W 77 (3.1") H 103.5 [4.1"]	W 77 (3.1") H 103.5 [4.1"]	N	W 247 [9.7"] H 185.5 [7.3"]
RESOLUTION	1024 x 768 pixels	800 x 600 pixels	800x480 pixels	800 x 480 pixels	240x320 pixels	240 x 320 pixels	640 x 480 or 800 x 600 or 1024 x 768 pixels user selectable	800 x 600 pixels
DIMENSIONS (mm & Inch)	L 345.4 (13.6") W 378 (14.86") H 99 (3.9")	L 224 (8.8") W 332.5 (13.1") H 128 [ 5"]	L 154 (6.1") W 244 (9.6") H 89.0 [3.5"]	L 154 (6.1") W 244 (9.6") H 89.0 [3.5"]	L 147.7 [5.8"] W 147.7 [5.8"] H 114.7 [4.5"]	L 147.7 [5.8"] W 147.7 [5.8"] H 135 (5.5")	L 95 (3.7") W 140 (5.5") H 84.4 [3.3"]	L 342 [13.5"] W 381.5 [15"] H 221 [8.9"]
CARTOGRAPHY	C-MAP C-CARD	C-MAP SD-CARD	C-MAP SD-CARD	C-MAP SD-CARD	C-MAP SD-CARD	C-MAP SD-CARD	C-MAP C-CARD	C-MAP C-CARD
OPERATING VOLTAGE	10 - 35 V dc.	10 - 35 V dc.	10 - 35 V dc.	10 - 35 V dc.	10 - 35 V dc.	10 - 35 V dc.	10 - 35 V dc.	10 - 35 V dc.
INTERFACE INPUTS/OUTPUTS	5 I/O Ports (NMEA0183)	5 I/O Ports (NMEA0183)	5 I/O Ports (NMEA0183)	4 I/O Ports (NMEA0183)	3 I/O Ports (NMEA0183)	2 I/O Ports (NMEA0183)	5 I/O Ports (NMEA0183)	5 I/O Ports (NMEA0183)
BBFF	Y	Y	Y	BUILT-IN	Y	BUILT-IN	Y	Y
RADAR	Y	Y	Y	Y	N	N	Y	Y
AIS	AIS 38400	AIS 38400	AIS 38400	AIS 38400	AIS 38400	AIS 38400	AIS 38400	AIS 38400
VIDEO INPUT	2	2	1	1	N	N	N	2
MICROPROCESSOR	400Mhz	300Mhz	300Mhz	300Mhz	300Mhz	300Mhz	400Mhz	200Mhz
C-CARD SLOTS	2	1					2	4
USER POINTS	10000	10000	10000	10000	5000	5000	10000	10000
SD SLOTS			1	1	1	1		1
TYPE OF USER POINTS	16 Types & 8 Colors	16 Types & 1 Colors	16 Types & 8 Colors	16 Types & 8 Colors	16 Types & 8 Colors	16 Types & 8 Colors	16 Types & 8 Colors	16 Types & 8 Colors
ROUTES	10000	50	50	50	25	25	10000	10000
MAX USER POINTS PER ROUTE	10000	10000	10000	10000	5000	5000	10000	10000
TRACKS	10000	5	5	5	5	5	10000	10000
TRACKPOINTS	10000	10000	10000	10000	5000	5000	10000	10000
FEATURES	MOB Grounding Alarm Arrival Alarm Depth Alarm XTE Alarm Anchor Alarm User Points List page Port & Tide Info Automatic Info On Cartographic Objects Navigation Info Find Port Find Wrecks Find Obstructions Find Tide Station 3D Road Page Time to Destination Distance to Destination Fuel Consumption Compass Calibration Wind Functions	MOB Grounding Alarm Arrival Alarm Depth Alarm XTE Alarm Anchor Alarm User Points List page Port & Tide Info Automatic Info On Cartographic Objects Navigation Info Find Port Find Wrecks Find Obstructions Find Tide Station 3D Road Page Time to Destination Distance to Destination Fuel Consumption Compass Calibration Wind Functions	MOB Grounding Alarm Arrival Alarm Depth Alarm XTE Alarm Anchor Alarm User Points List page Port & Tide Info Automatic Info On Cartographic Objects Navigation Info Find Port Find Wrecks Find Obstructions Find Tide Station 3D Road Page Time to Destination Distance to Destination Fuel Consumption Compass Calibration Wind Functions	MOB Grounding Alarm Arrival Alarm Depth Alarm XTE Alarm Anchor Alarm User Points List page Port & Tide Info Automatic Info On Cartographic Objects Navigation Info Find Port Find Wrecks Find Obstructions Find Tide Station 3D Road Page Time to Destination Distance to Destination Fuel Consumption Compass Calibration Wind Functions	MOB Grounding Alarm Arrival Alarm Depth Alarm XTE Alarm Anchor Alarm User Points List page Port & Tide Info Automatic Info On Cartographic Objects Navigation Info Find Port Find Wrecks Find Obstructions Find Tide Station 3D Road Page Time to Destination Distance to Destination Fuel Consumption Compass Calibration Wind Functions	MOB Grounding Alarm Arrival Alarm Depth Alarm XTE Alarm Anchor Alarm User Points List page Port & Tide Info Automatic Info On Cartographic Objects Navigation Info Find Port Find Wrecks Find Obstructions Find Tide Station 3D Road Page Time to Destination Distance to Destination Fuel Consumption Compass Calibration	MOB Grounding Alarm Arrival Alarm Depth Alarm XTE Alarm Anchor Alarm User Points List page Port & Tide Info Automatic Info On Cartographic Objects Navigation Info Find Port Find Wrecks Find Obstructions Find Tide Station 3D Road Page Time to Destination Distance to Destination Fuel Consumption Compass Calibration Wind Functions	MOB Grounding Alarm Arrival Alarm Depth Alarm XTE Alarm Anchor Alarm User Points List page Port & Tide Info Automatic Info On Cartographic Objects Navigation Info Find Port Find Wrecks Find Obstructions Find Tide Station 3D Road Page Time to Destination Distance to Destination Fuel Consumption Compass Calibration



SWR 10 (4.5')



SWR 10 (3.5')



SWR 9



SWR 8



SWR 1

ANTENNA	4,5 Feet	3,5 Feet	1,8 Feet	1,5 Feet	0,9 Feet
TRANSMITTING POWER	4Kw	4Kw	4Kw	2Kw	2Kw
TRANSMITTING FREQUENCY	9410 ±30Mhz	9410 ±30Mhz	9410 ±30Mhz	9445 ±30Mhz	9445 ±30Mhz
BEAM WIDTH (DEGREE)	1.7° Horizontal , 25° Vertical	2.4° Horizontal , 25° Vertical	4.0° Horizontal , 25° Vertical	4.7° Horizontal , 25° Vertical	7.0° Horizontal , 25° Vertical
ROTATION	24rpm	24rpm	24rpm	30rpm	30rpm
OPERATING TEMPERATURE	-25 to +55 °C	-25 to +55 °C	-25 to +55 °C	-25 to +55 °C	-25 to +55 °C
APPARENT WIND FUNCTIONING	70Knots	70Knots	100Knots	100Knots	100Knots
WATER RESISTANCE	IPx6(IEC60529)	IPx6(IEC60529)	IPx6(IEC60529)	IPx6(IEC60529)	IPx6(IEC60529)
SCALE (NM)	1/8 ~48	1/8 ~48	1/8 ~36	1/8 ~24	1/8 ~24
IMAGE PRESENTATION	Full 240x240/480x480 dots(2Bits), Quadrant: 120x120/240 x240 dots(2 Bits)	Full 240x240/480x480 dots(2Bits), Quadrant: 120x120/240 x240 dots(2 Bits)	Full 240x240/480x480 dots(2Bits), Quadrant: 120x120/240 x240 dots(2 Bits)	Full 240x240/480x480 dots(2Bits), Quadrant: 120x120/240 x240 dots(2 Bits)	Full 240x240/480x480 dots(2Bits), Quadrant: 120x120/240 x240 dots(2 Bits)
WIRE LENGHT	10M (optional additional cable available)	10M (optional additional cable available)	10M (optional additional cable available)	10M (optional additional cable available)	10M (optional additional cable available)
SUPPLY VOLTAGE	12,8 to 41,6 VDC	12,8 to 41,6 VDC	12,8 to 41,6 VDC	12,8 to 41,6 VDC	12,8 to 31,2VDC
POWER CONSUMPTION MAX	80W or Less	80W or Less	45W or Less	30W or Less	30W or Less



BBFF MK-II - Black Box Fishfinder

DISPLAY COLOURS:	256 colours on colour chart plotter
DISPLAY RESOLUTION VERTICAL:	up to 400 pixels (depending on chart plotter screen resolution)
ELECTRIC POWER SUPPLY:	10-35 Vdc
MAXIMUM POWER CONSUMPTION:	17W max (1A @12V)
POWER CONSUMPTION on stand-by:	1.7 W max
OPERATING FREQUENCY:	50/200 KHz
ACOUSTIC SOUNDER POWER:	600/1000W (4800/8000 Wpp)
EXTERNAL AUDIBLE SIGNAL (buzzer):	12Vdc, 400ma
OPERATING TEMPERATURE:	0°C to + 50°C
WEIGHT:	1Kg
DIMENSIONS:	193mm x 55mm
LEVEL OF PROTECTION:	IP 54

Satellite TV Antenna



SW SAT 39  
SW SAT 39/3  
SW SAT 39S



SW SAT 41



SW SAT 41S



SW SAT 55



SW SAT 61



SW SAT 101S  
SW SAT 71S

ANTENNA DISH DIAMETER:	41 cm	41 cm	41 cm	55 cm	61 cm	71 cm
OVERALL DIMENSIONS (Ø X HEIGHT):	45 x 52 cm	45 x 52 cm	45 x 52 cm	59 x 73 cm	65 x 77 cm	81 x 91 cm
WEIGHT:	10 Kg	10 Kg	10 Kg	22 Kg	24 Kg	25 Kg
AZIMUT RANGE:	720°	720°	720°	720°	720°	720°
ELEVATION RANGE:	7° - 85°	7° - 85°	7° - 85°	7° - 90°	0° - 90°	5° - 90°
LNB ROTATION:	-45°/+45° for TechSat 39S	-45°/+45°	-45°/+45°	-45°/+45°	-60°/+60°	-45°/+45°
ROLL AND PITCH TRACKING:	60°/s	60°/s	60°/s	60°/s	45°/s	50°/s
OPERATING TEMPERATURE RANGE:	-20°C/+50°C	-20°C/+50°C	-20°C/+50°C	-20°C/+50°C	-20°C/+50°C	-20°C/+55°C
STORED SATELLITES:	2	2	2	12 + 12	20	12 + 12
SKREW REGULATION :	manual and automatic	manual and automatic	manual and automatic	manual and automatic	manual and automatic	manual and automatic
GAIN:	31.5 dB	31.5 dB	31.5 dB	31.5 dB	47 dB	36 dB
POWER CONSUMPTION:	20W max	20W max	20W max	40W max	50W max	45W max
ELECTRIC POWER SUPPLY:	12/24 Vdc	12/24 Vdc	12/24 Vdc	12/28 Vdc	24 Vdc	12/28 Vdc
OUTPUT	2 independent output LNB for TechSat 39 (stabilized on 2 axis) 3 independent output LNB for TechSat 39/3 (stabilized on 2 axis) 3 independent output LNB for TechSat 39S (stabilized on 3 axis)	LNB 3 universal outputs	LNB 4 universal expandable outputs	LNB 4 universal outputs	LNB 3 universal outputs	LNB 4 universal outputs LNB VH VH Double Polarization System: DVB (Europe) and DVS (America)



SW AP03 autopilot

SW AP01 AUTOPILOT



NMEA Data SW RP03



DEPTH SW RP05



SW RP07  
Log/Speed/temperature



GPS ANTENNA

<b>DISPLAY:</b>	backlight LCD with 6 m cable	backlight LCD with 6 m cable	Large, 4 digit LCD display, 5 levels of backlight with external backlight control	Large, 4 digit LCD display, 5 levels of backlight with external backlight control	Large, 4 digit LCD display, 5 levels of backlight with external backlight control
<b>INPUT FORMAT:</b>	NMEA 0183	NMEA 0183	NMEA 0183, standard and proprietary sentences	1 NMEA 0183	
<b>INPUT CHANNELS:</b>	2	2	4		
<b>OUTPUT:</b>	1	1			
<b>ELECTRIC POWER SUPPLY:</b>	12 to 14Vdc*	12 to 14Vdc	9.50 to 33Vdc, .035 A nominal	9.50 to 16.00Vdc, .037 A nominal	9.50 to 33.00Vdc, .037 A nominal
<b>OPERATING TEMPERATURE:</b>	-10° to 50°C	-10° a 50°C	0° to 50°C	0° to 50°C	0° to 50°C
<b>ELECTRIC POWER SUPPLY RANGE:</b>	: 10 to 16 Vdc	10 to 16 Vdc			
<b>DATA INPUT, VOLTAGE RANGE:</b>			0 to 5 V Nominal, -20V to +20V maximum		
<b>INTERFACES:</b>	NMEA 0183 · 2 INPUT · 1 OUTPUT	NMEA 0183 · 2 INPUT · 1 OUTPUT			
<b>CONSUMPTION:</b>	Standby 0.3 A @ 12 Vdc during pilotage with 20% duty cycle: 2.5A	Standby 0.3 A @ 12 Vdc during pilotage with 20% duty cycle: 2.5A			
<b>COMPASS:</b>	Fluxgate, 8 mt cable	Fluxgate, 8 mt cable			
<b>ACCURACY:</b>	2°RMS	2°RMS			
<b>ROLL/PITCH</b>	± 35°	± 35°			
<b>RUDDER TRANSDUCER:</b>	10 mt. cable	10 mt. cable			
<b>MOTOR DRIVE:</b>	15A continuous, 30A peak	15 A continuous, 30 A peak			
<b>ACCESSORIES INCLUDED:</b>	helm transducer, controller, fluxgate compass, junction and control box	helm transducer, controller, fluxgate compass, junction and control box			
<b>HELM POSITION ACCURACY:</b>		1°			
<b>MEMORY:</b>			Up to 10 new sentences (can be overwritten)		
<b>RESOLUTION:</b>				0.1 metre to 20.0 - 1 over 20	from 0.1 knots, MPH, Km/h, 0.1 °F, °C
<b>KEEL OFFSET OF RANGE REGULATION:</b>				-6 to +6 m	
<b>ALARMS (On/Off icon):</b>				Shallow water alarm Deep water alarm - Anchor alarm	
<b>ADDITIONAL FEATURES:</b>				Units of measurement in Feet, Metres and Fathoms	Units of measurement in Knots, MPH, Km/h, °F, °C
<b>TRANSDUCERS:</b>				stern and thru-hull plastic transducer, thru-hull bronze transducer	stern and thru hull in plastic for speed/temperature, thru hull in bronze for speed/temperature
<b>DATA DISPLAYED:</b>					Speed, Average Speed, Water Temperature, Regatta Chronometer, Elapsed Time
<b>RANGE:</b>				Depth from 0.3 to 365 metres	Speed from 0.00 to 50.0 knots Temperature from 0.0°V to 32.0° Regatta chronometer from 1 to 99 minutes

\* 24 Vdc optional upon request

<b>OVERALL DIMENSIONS (ø x height):</b>	97 x 32 mm (flush/pole/rail mounting)
<b>WEIGHT:</b>	160 grams (without cable)
<b>CABLE:</b>	15 meter 8x28AWG
<b>INPUT VOLTAGE:</b>	10-35 Vdc.
<b>POWER CONSUMPTION:</b>	0.8 W max
<b>ELECTRICAL INTERFACE :</b>	TTL voltage levels, RS-232 polarity
<b>RECEIVING METHOD :</b>	16 channels parallel (up to 3 for WAAS Satellites)
<b>RECEIVING FREQUENCY :</b>	1575.42MHz (L1, C/A code)
<b>RECEIVING SENSITIVITY :</b>	Less than -134 dBm
<b>TIME TO FIRST FIX (TTFF)</b>	Warm Start :33 seconds (typical) Cold Start :40 seconds (typical)
<b>ACCURACY POSITION :</b>	Less than 2.5mCEP1 5.0mSEP2: GPS;(SA=OFF; HDOP<4) Less than 2.0mCEP1 3.0mSEP2: DGPS;(SA=OFF; HDOP<4)
<b>DYNAMICS ACCELERATION:</b>	Strong Signals <= 4g Weak Signals typical 1g
<b>ALTITUDE:</b>	18000m
<b>VELOCITY:</b>	1850Km/h (515 m/sec)
<b>DGPS FORMAT:</b>	WAAS; EGNOS; MSAS
<b>OUTPUT FORMAT:</b>	NMEA-0183 Baud rate 4800 N81
<b>NMEA OUTPUT MESSAGES:</b>	GGA, RMC, GSA, GSV, TXT
<b>GEODETIC DATUM :</b>	WGS84
<b>OPERATING TEMPERATURE:</b>	from 0°C to +60°C
<b>STORAGE TEMPERATURE:</b>	from -20°C to +85°C
<b>RELATIVE HUMIDITY:</b>	95% non-condensing
<b>WATER RESISTANCE:</b>	IPX7



**SEIWA**



[www.seiwa-marine.com](http://www.seiwa-marine.com)  
[www.seiwamarine.eu](http://www.seiwamarine.eu)



All the info related to all Seiwa products can be easily found on our web site [www.seiwa-marine.com](http://www.seiwa-marine.com). Manuals, technical specifications, news, information, list distributors, and much more, available on line at all times. Check [www.seiwa-marine.com](http://www.seiwa-marine.com) for the solutions to your navigational needs.

#### ASIA / MIDDLE EAST



**Can Traders and Services Pte Ltd**  
61 Kaki Bukit Avenue 1, #05-04 Shun Li Ind Park,  
Singapore 417946 TEL. 64-68418338 FAX 64-8418878  
Web: [www.cantrade.com.sg](http://www.cantrade.com.sg)  
SINGAPORE



**Kamala Co Ltd**  
1668/76 Soi Chareonkrung 56, Chareonkrung Road,  
Yannawa, Bangkok 10120, Thailand  
TEL. (662) 212 5256 FAX (662) 2125257  
E-Mail: [aswin.komolkiti@gmail.com](mailto:aswin.komolkiti@gmail.com)  
THAILAND



**Maizan Electronics**  
8 Sosun Magu, Male' Maldives  
TEL. 960 325211 FAX 960 325707  
E-Mail: [maizan@141.com](mailto:maizan@141.com)  
MALDIVE ISLANDS



**P. Fishcheles Ltd**  
Building No 62, Kishon Fishing Port  
Haifa Bay PO Box 33673, Haifa 31033, Israel  
TEL. 972-48419379 FAX 972-48410351  
E-Mail: [fishcheles@netvision.net.il](mailto:fishcheles@netvision.net.il)  
ISRAEL

#### AMERICA



**Si-Tex Marine Electronics Inc.**  
11001 Roosevelt Blvd, Suite 800, St. Petersburg,  
FL 33716, USA  
Tel. 727-8765995 FAX 727-5765547  
Web: [www.si-tex.com](http://www.si-tex.com)  
USA



**SisNav**  
Rua Sao Pedro 154-S, 906/907 Cep:24020-052  
Centro - Niteroi- Rio De Janeiro - Brazil  
TEL. 5521-6200934 FAX 5521-7174985  
BRAZIL



**Ecotronica S.A.C.**  
TEL. Lima 511-5502172 (Central) - 511-98905695  
NEXTEL 826\*1370  
Avenida Saenz Peña 182 Oficina 305 - Callao  
Web: [www.ecotronicaperu.com](http://www.ecotronicaperu.com)  
E-Mail: [info@ecotronicaperu.com](mailto:info@ecotronicaperu.com)  
PERU



**Electromaritima Uruguay Ltda**  
Guatemala 1260  
11800 Montevideo  
Tel: +598 2 924 7139  
Fax: + 589 2 924 7138  
[www.electromaritima.com.uy](http://www.electromaritima.com.uy)  
Uruguay

#### RUSSIA



**NavMarine**  
125445, Moscow, Smolnaya str., office 18  
Tel: +7 495 981 2790, 780-31-01  
[www.navmarine.ru](http://www.navmarine.ru)  
[info@navmarine.ru](mailto:info@navmarine.ru)  
RUSSIA

#### AFRICA



**Radio Holland**  
306 Gale Street, Durban 4001, South Africa  
TEL. 27 31 2055309 FAX 27 31 2055541  
Web: [www.radioholland.co.za](http://www.radioholland.co.za)  
SOUTH AFRICA



**Espace Peche**  
5 Rue Emile Augier, Casablanca, Morocco  
TEL. 212-2-2486280 FAX 212-2-2486279  
E-Mail: [espachepechecasa@wanadoo.net.ma](mailto:espachepechecasa@wanadoo.net.ma)  
MOROCCO

#### PACIFIC



**Advance Trident Ltd**  
383 New North Road, Kingsland, Auckland, New Zealand.  
TEL. 64-9-8455347 FAX 64-9-8455347  
Web: [www.advancetrident.com](http://www.advancetrident.com)  
NEW ZEALAND



**Coursemaster Autopilots Pty Ltd**  
7 Smith Street, Chatswood NSW 2067, Australia  
TEL. 61-2-9417 7097 FAX 61-2-9417 7557  
Web: [www.coursemaster.com](http://www.coursemaster.com)  
AUSTRALIA

**EUROPE**

-  **Marine Pan Service srl**  
via C. Battisti 25, 00053 Civitavecchia, Italy  
TEL: 39 0766 30361 FAX 39 0766 32330  
Web: www.marinepanservice.com  
ITALY
-  **Kniest Boat Equipment BV**  
Emmastraat 26, 6862GT Oosterbeek  
Tel: +31 26 3336525  
mail: info@kniest.nl
- Kniest Boat Equipment BV**  
IJmeerdijk 4, 1361AA Almere  
Tel: +31 36 5369440 - mail: muiderzand@kniest.nl  
THE NETHERLANDS
- George Kniest Boat Equipment**  
Jachthaven Marina Muiderzand  
IJmeerdijk 4  
1361AA Almere  
tel: +31 (0)365 5369440  
Mail: Muiderzand@kniest.nl  
NETHERLANDS
- George Kniest Boat Equipment**  
Emmastraat 26  
6862GT Oosterbeek  
tel: +31 (0)26 3336525  
Mail: info@kniest.nl  
NETHERLANDS
- Alphatron Marine**  
Schaardijk 23(haven 115)  
3063NH Rotterdam  
tel: +31 (0)10 4534000  
Mail: info@alphatron.nl  
NETHERLANDS
- Alphatron Marine**  
Galvanistraat 24  
8861NC Harlingen  
tel: +31 (0)517 430810  
NETHERLANDS
- Alphatron Marine**  
Het Nieuwe Werk 100  
1781AK Den Helder  
tel: +31 (0)610 239182  
NETHERLANDS
- Alphatron Marine**  
Hercules weg 22  
4338PL Middelburg  
tel: +31 (0)118 640070  
NETHERLANDS
-  **Almar d.o.o.**  
Kamenarija 12, HR52452 Funtana (Prec), Croatia  
TEL. 385 52 445 005 FAX 385 52 445 276  
CROATIA

**EUROPE**

-  **Promaco Ltd**  
ul. Dzika 9, 00-194 Warszawa Poland  
TEL/FAX 022-635 19 13 - 0-501 392 592- 022 789 23 33  
Web: www.promaco.pl  
POLAND
-  **SEIWA Benelux**  
Tel. +32 499739378  
john@seiwa-marine.com  
BELGIUM
- Landmeters Naval Stores Bvba**  
Godefriduskaai 26-28  
2000 Antwerpen  
Tel: +32 (0) 3 2333131  
Mail: info@landmeters.com
-  **Sonar ehf**  
Hvaleyrarafraut 3, 220 Hafnarfjörður, Iceland  
TEL. 354 578 1910 FAX 354 578 1911  
Web: www.sonar.is  
ICELAND
-  **Disvent Ingenieros**  
Equador 77, 08029 BARCELONA  
Tel. 34-902 886 363 Fax 34-93-363 63 90  
bravo@disvent.com  
SPAIN
-  **ProNav**  
Oy Näkinkuja 4 FIN-00530 HELSINKI  
Tel. +358-(0)9-73103100  
Fax +358-(0)9-730613  
www.seiwa.fi  
FINLAND
-  **Hellas Marine Electronics**  
85 Aljimmou AV, 174-55 Alimos, Athens, Greece  
TEL. 30-210-996-6730 FAX 30-210-9967847  
Web: www.hme.gr  
GREECE
-  **K J Electronics Ltd**  
G Drosini Street, Iacovou Port Gate Shops 6-7, Larnaca, Cyprus  
TEL. 357-4-636360 FAX 357-4-635427  
E-Mail: kjelect@logos.cy.net  
CYPRUS
-  **MAP Marine**  
1, quai de la Grande Bigue - bât B - 13002 Marseille  
Tel: +33 61 27 789 37 Fax 04 91 07 54 43  
Web: www.map-marine.com  
FRANCE
-  **Mantsbrite Limited**  
19F, Spital Road, Maldon, Essex, CM9 6DY, United Kingdom  
TEL. 44 621 853003 FAX 44 621 850877  
Web: www.mantsbrite.com  
UK

**EUROPE**

-  **Navteam A/S**  
Norgesvej 7 DK 5700 Svendborg  
UL. 45 63 21 8080 FAX 45 63 21 8081  
Web: www.navteam.dk  
DENMARK
-  **Seawave AS**  
Gjelleråsveien 7b, N-1481 Hagan, Norway  
Tel. 47 - 908 38 385  
Web: www.seawave.no, e-mail: post@seawave.no  
NORWAY
-  **Navisat Stadler S.R.O.**  
Domokovaska 1256, 19300 Praha, Czech Republic  
Tel. +42 02 81 92 45 30  
Web: www.navigacegps.cz  
CZECH REPUBLIC
-  **Caruana Marine Centre**  
Bone Lane Bir id-Deheb - Zejtun ZTN05  
Tel: + 356-21 821 332  
caruanamarine@waldonet.net.mt  
MALTA
-  **Seatec, Equipamentos de Comunicação e Navegação, Lda.**  
Estrada do Outeiro de Polima, lote.11-1D-Abóboda  
2785-521 S. Domingos de Rana - Lisboa  
Tel: +351 21 44 57 210  
comercial@seatec.pt  
www.seatec.pt  
Portugal
-  **Myor Prima S.r.l.**  
str. Feleacului n.1 ARAD  
ROMANIA
-  **SVB GmbH\***  
Gelsenkirchenerstrasse 25 - 28199 Bremen  
Tel: (0421)57290-0  
Mail: info@svb.de
- AWN Marinashop Müritz**  
Kuhnle Werft  
Hafendorf Müritz - 17248 Rechlin  
tel: +49 (0)39823 26622  
mail: werft@kuhnle-werft.de
-  **BoatNav AB**  
Box 1582, 221 01 LUND - Sweden  
TEL. 46 46 329200 FAX 46 46 329210  
Web: www.boatnav.se  
SWEDEN
-  **G. Ascherl GmbH**  
Industriestrasse 43  
6971 Hard (Bodensee)  
tel: +43 (0)574 89900-20  
mail: gaj@ascherl.at

**EUROPE**

-  **A.W.Niemeijer GmbH**  
Holstenkamp 58 - 22525 Hamburg  
tel: +49 (0)40 899697300  
mail: awn.hamburg@awn.de  
GERMANY
- A.W.Niemeijer GmbH**  
Schnakkenburgallee 149a-22525 Hamburg  
tel: +49 (0)40 548085710  
mail: awn.fundgrube@awn.de
-  **Promaco Ltd**  
ul. Dzika 9, 00-194 Warszawa Poland  
TEL/FAX 022-635 19 13 - 0-501 392 592- 022 789 23 33  
Web: www.promaco.pl  
POLAND
- SMART sp.z o.o.**  
Aleja Jana Pawla II 5  
81-345 Gdynia  
tel: +48 (58)6611750  
mail: smart@smart.gda.pl
- SMART o/Szczecin**  
ul. Jana z Kolna 21A  
71-603 Szczecin  
tel: +48 (91)4883353  
mail: szczecin@smart.gda.pl
- SMART o/Nieporęt**  
ul. Wojska Polskiego 3  
02-126 Nieporęt (Warsaw)  
tel: +48 (22)7934067

Within the last page you can find the addresses of our dealers in the rest of the world



-  **Seiwa Co Ltd**  
916 Po Lung Centre  
11 Wang Chiu Rd  
Kowloon Bay  
Hong Kong  
info@seiwa-marine.com

seiwa-marine.com  
seiwamarine.eu

2010

WORLDWIDE DISTRIBUTION AND SUPPORT NETWORK