

advanSea

2010





This is not just another brand in electronics, this is Advanced Navigation Technology.

AdvanSea, the name to go to sea with...

The new advanSea program has been inspired by the valuable feedback gained from listening to yachtsmen for many years.

We combined this precious experience with the latest LCD



and GPS engineering technology,

to provide yachtsmen with

all navigation essentials.

AdvanSea offers enhanced

ergonomics, user-friendly intuitive

software, easy installation

and state-of-the-art navigational features.

Whether you are looking for a basic single function

or a complete integrated program,

AdvnSea, it's so easy !



NEW in 2010 :
range of AIS
and VHF radios

COMBO - GPS



AdvanSea Combo and GPS units take full advantage of the latest cutting edge technology in GPS receiver and LCD displays.

- Standard internal GPS with connection for optional external antenna.
- User-friendly, intuitive operating program guides you through the functions with icon access.
- High resolution daylight viewable LCD with anti-fogging coating.
- Patented easily adjustable quick release bracket.
- C-MAP MAX charting in SD card format.
- AIS interface ready.



Intuitive user interface
With the selection of functions and pages from user-friendly icons.



Save your favourite sonar or chart images in the embedded memory (128MB) or removable SD card, for viewing and printing on your PC.



Exclusive bracket
advanSea

EXCLUSIVE QUICK-ADJUST BRACKET
The universal bracket mounting system allows the AdvanSea unit to be adjusted or detached with a single action.



The ingenious quick release design of the bracket means the AdvanSea navigator can be adapted to fix in any orientation: on a horizontal, vertical and even overhead surface.

COMBO C.56

5.6" GPS COMBO, CHART PLOTTER/ FISHFINDER

All-in-one navigator : combines a high resolution VGA GPS chart plotter with powerful dual frequency sonar.

FEATURES

- 5.6" VGA (640 x 480) screen bonded, ultra-bright daylight viewable display.
- 50/200 kHz dual frequency sonar with powerful 600 W RMS power output to display targets up to 600 m (2000 ft).
- Digital speed and temperature data.
- «SnapShot» function : save your favourite sonar or chart images in the onboard memory (128Mb) or removable SD card, enabling transfer to your PC for viewing and printing.
- CMAP MAX on SD card format.
- NMEA0183 interface : 2 inputs and 2 outputs.
- NMEA2000 interface : to repeat or process data from other sources such as engines, intelligent transducers and navigation instruments.
- AIS compatible.
- Waterproof to IPX7.



	Ref.
C.56 GPS Combo complete with Airmar P58 tri-function transom mount transducer	57740
C.56 GPS Combo complete with Y-cable for connection to optional in/through hull transducers (see page 13)	57741

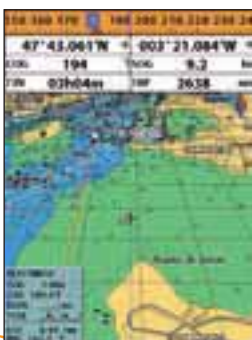
Supplied with weather cover and bulkhead mount kit.



Built-in fishfinder :
High power (600WRMS), dual-frequency (50/200kHz) fishfinder, to display bottoms up to 600 m (2000 ft). Manual or auto control. Playback function to view bottom detail history over a few minutes.



Split screen :
The customisable screen splits in 4 windows (max), for optimised functionalities in real time.



AIS-compatible C-MAP MAX plotter :
All C-MAP MAX features on a high resolution screen. Tracking of AIS traffic on the screen, by connecting your GPS to the AdvanSea AIS or compatible instrument (NMEA0183).



Data repeat :
Connect your NMEA0183 or NMEA2000 compatible instruments or transducers, and use your T.56 as a true navigation and fuel management computer (fuel, weather forecast, etc...). 7 fully customisable icon screens.



Combo C.56 is supplied with the Airmar P58 tri-function transom transducer (depth, speed, temperature) or adaptor cable to select your optional through or in-hull transducers. See page 9.

GPS T.56

5.6" GPS CHART PLOTTER

High resolution VGA GPS chart plotter, with both NMEA0183 and 2000 connections. This makes the T.56 a complete multi-function navigation repeater of all external data on board compatible external devices e.g. cockpit instruments.



MAX '09

AdvanSea GPS use the latest cartography version C-MAP MAX 09 incorporating its most recent features on SD card, with satellite images (large scale), Smooth Zoom etc... Please refer to our comprehensive brochure on www.plastimo.com or www.advantsea.com.

Ref.

T.56 GPS-chart plotter

57738

Supplied with weather cover and bulkhead mount kit.



FEATURES

- 5.6" VGA (640x480) screen bonded, ultra-bright daylight viewable display.
- Digital speed and temperature data.
- «SnapShot» function : save your favourite chart image in the onboard memory (128Mb) or removable SD card, enabling transfer to your PC for viewing and printing.
- CMAP MAX on SD card format.
- NMEA0183 interface : 2 inputs and 2 outputs.
- NMEA2000 interface : to repeat or process data from other sources such as engines, intelligent transducers and navigation instruments.
- AIS compatible.
- Waterproof to IPX7.



Highway screen :
follow your heading on chart or on highway, with cross-track error indications.



Window splits :
The customisable screen splits in 4 panes (max), to optimise functionalities in real-time.



C-MAP MAX :
Get all C-MAP MAX features on a high resolution screen, including perspective view, satellite view and smooth zoom.



User-friendly icons menu :
Like other advanSea GPS, the T.56 features a PAGE key for quick and intuitive access to all available screens. Favourite screens can also be saved.



Data repeat :
Connect your NMEA0183 or NMEA2000 compatible instruments or transducers, and use your T.56 as a true navigation and fuel management tool (fuel, weather forecast etc...). 7 fully customisable graphical screens.





GPS T.50

5" GPS-CHART PLOTTER

A compact chart plotter with bright and sharp QVGA display. The T.50 combines a fully featured navigation program with a simple intuitive operating system that allows fast and easy access to frequently used functions (GOTO, favourite screens...).

Art. Nr.

T.50 GPS-chart plotter

57736

Supplied with weather cover and bulkhead mount kit.

FEATURES

- 5" LCD unit, QVGA bright and sharp (320x240 resolution), daylight viewable display.
- «SnapShot» function : save your favourite chart image in the onboard memory (128 Mb) or removable SD card, enabling transfer to your PC for viewing and printing.
- CMAP MAX on SD card.
- NMEA 0183 compatible : 2 inputs and 2 outputs.
- AIS compatible when connected to an AdvanSea receiver or an NMEA0183 compatible instrument.
- Waterproof to IPX7.



Split screen :
The customisable screen splits in 4 windows (max), to optimise functionalities in real-time.



User-friendly icons menu :
All AdvanSea GPS models feature a PAGE key for quick and intuitive access to all screens.



Integrated antenna
All AdvanSea GPS are supplied with an internal 16-channel high sensitivity antenna.

Watertight connectors



C-MAP MAX, AIS compatible :
Get all C-MAP MAX features together with all AIS data from AdvanSea receiver or from any other AIS compatible NMEA0183 instrument.

ACCESSORY



PA150 external GPS antenna 57743

Locating an AdvanSea GPS or Combo unit inside a cabin may require an external antenna. Supplied with 10 m cable, BNC connector and flush mount kit.

NMEA 2000® interface

Increasing numbers of embedded systems communicate through the NMEA 2000® standard.

AdvanSea T.56 GPS and C.56 Combo can integrate an NMEA 2000® existing network, and receive data from various transducers.

With this interface, you can display the engine analogue data and fuel level on different screens anywhere on the boat. NMEA 2000® has a significantly higher data rate, 50 times faster, than NMEA 0183 and allows a totally secure binary transfer of data (CAN bus base).

An NMEA 2000® network requires cables and standard connectors.

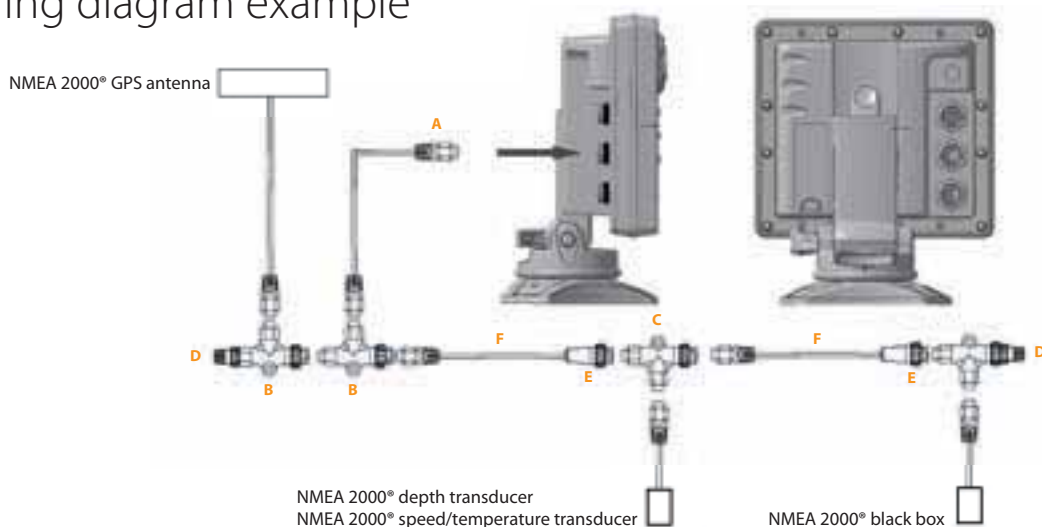
• Combo C.56 & GPS T.56:
NMEA2000 & NMEA0183
• GPS T.50 : NMEA0183



Cables and connectors for NMEA interface

INSTRUMENT	NMEA 2000® ACCESSORIES	REFERENCE	DESCRIPTION	
T.56 GPS C.56 Combo	NMEA 2000® cable	58494	Display / NMEA 2000® network connector. 2-m cable.	A
T.56 GPS C.56 Combo	T connector for NMEA 2000® network	58499	Male / Female / Female connector	B
T.56 GPS C.56 Combo	Power cable for NMEA 2000® network	58495	Female / Female connectors. 8-m cable	C
T.56 GPS C.56 Combo	Termination resistors for NMEA 2000® network	58500 58501	Male connector Female connector	D
T.56 GPS C.56 Combo	Field connectors for NMEA 2000®	58497 58498	Male connector Female connector	E
T.56 GPS C.56 Combo	Double ended NMEA 2000® network cable	58496	Male and female connectors. 10-m cable	F

Wiring diagram example

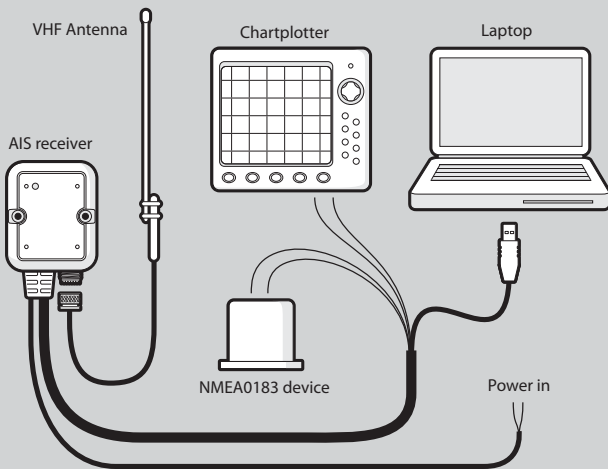
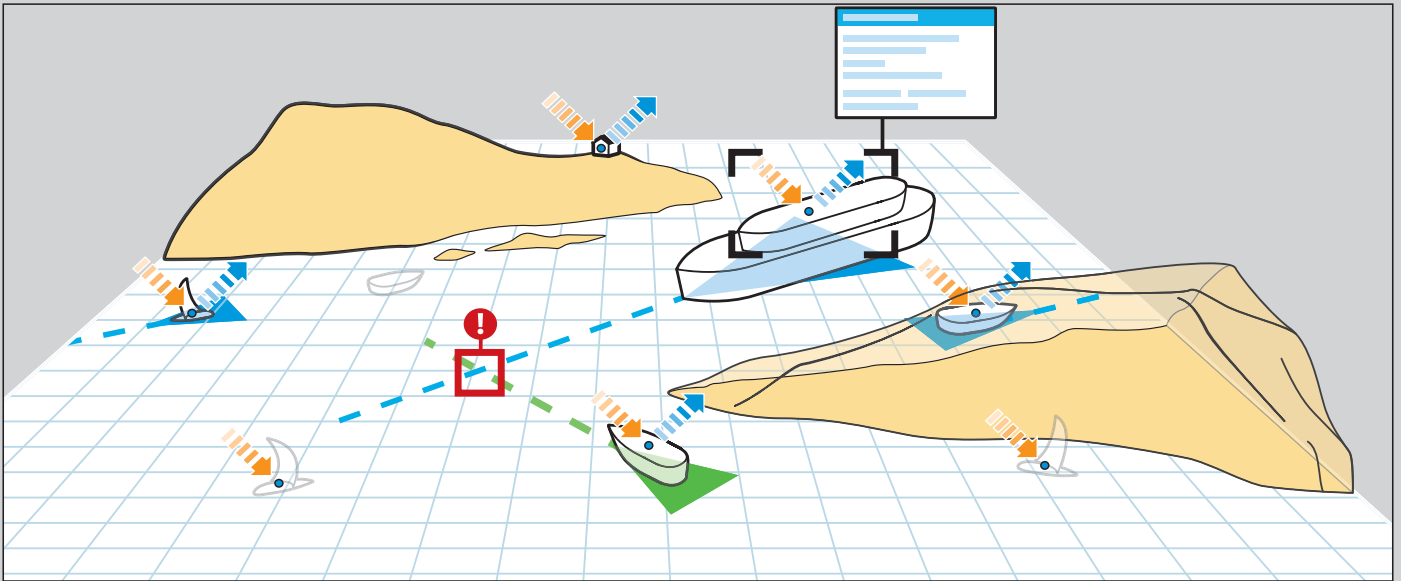


Improve your safety at sea with advanSea AIS.

Receive AIS broadcasts from other vessels and display their location speed and heading on your GPS Plotter or PC.
All advanSea GPS plotters are AIS interface ready.

What is AIS ?

The AIS system, Automatic Identification System, enables the automatic exchange of navigation data such as position, MMSI number, course, speed etc... over the marine VHF digital network.



AIS RX-100 Receiver

More compact than the TR200, the RX-100 outputs the received AIS data transmitted by vessels with class A and B transponders on the VHF-network and displays it on an AIS compatible GPS/Plotter via an NMEA 0183 interface. The RX-100 is also supplied with a USB cable for PC applications.

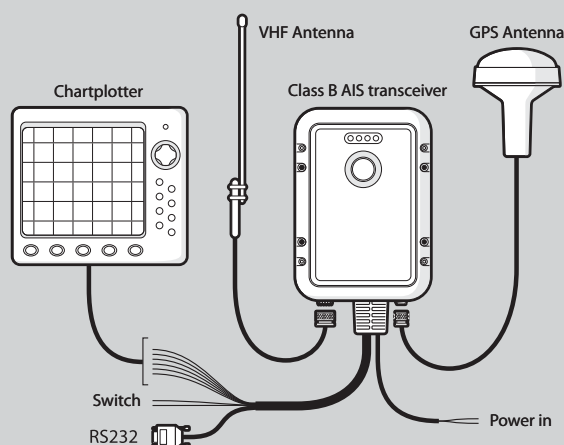
RX-100 AIS receiver

Ref.
58558



AIS TR-200

Transceiver



TR-200 AIS transceiver

Ref.

58557

See and be seen : this new Class-B AIS transceiver module enables both the transmission and reception of AIS data from your boat. Your vessel identification data is programmed into the TR-200 using the software and cable included with the transceiver.

You can also transmit a distress message using the main selection control, or turn off transmit function during races if you do not wish to be seen.

The TR-200 AIS transceiver output connects to your GPS/Plotter via the NMEA0183 interface and to your PC through a serial connector (included). An active GPS antenna is supplied with the TR200 to supply the vessel position data to the transmitter module.

Compact and waterproof to IPX7 construction.



SPECIFICATIONS	AIS RX-100	AIS TR-200
Dimensions	80 x 65.5 x 33.25 mm (L x W x H)	215 x 150 x 45 mm (L x W x H)
Weight	200g	685 g
Power	DC (9.6V - 28.8V) - Average power consumption <1.5W Peak current rating : 200mA	DC (9.6V - 15.6V) - Average power consumption : 4W Peak current rating : 2A
GPS Receiver	-	16 channel IEC 61108-1 compliant
Electrical Interfaces	USB 2.0 38400 baud bi-directional NMEA0183 38400 baud (output) 4800 baud (input)	RS232,38.4kBaud bi-directional RS422 NMEA 38.4kBaud bi-directional
Connectors	VHF antenna connector type: SO239, 50 Ohms. USB 2.0 NMEA0183 / Power	VHF antenna connector - GPS antenna connector RS232/RS422/Power/External switch
Transceiver	-	Transmitter x 1
Dual channel receiver	Fixed frequency reception at 161.975 and 162.025 MHz	One receiver time shared between AIS and DSC. Frequency: 156.025 to 162.025 MHz
Operating temperature	-25°C to +55°C	-25°C to +55°C
Waterproofness	IPX2	IPX7 Tested to IEC 60945
Indicators	-	Power, TX timeout, error, status
Operator Controls	-	Single switch configurable to enable either silent mode or safety related message functions



AIS SPLIT-100

VHF Splitter

Enables the simultaneous use of the vessel's installed marine VHF radio and an AIS receiver via a single VHF antenna.

Ref.

SPLIT-100 AIS splitter

58559



Instruments are the core component of any yacht navigation system. The advanSea S400 series uses cutting edge technology to provide accurate data for cruisers or racers.

- Accuracy, optimal legibility, flexibility and ease of installation are the key benefits of the S400 series, together with easy intuitive operation with direct function access.
- LCD screens with wide-angle viewing and super size digits for unmatched visibility. Watertight display facia (IP66) ; displays feature an anti-fogging coating for optimal safety even in extreme conditions.

The S400 series is available with a choice of compatible transducers manufactured by Airmar or Plastimo. The instruments can also operate as 'stand alone' with intelligent transducers or an NMEA0183 source.

DEPTH

HI-PERFORMANCE DEPTH SOUNDER GIANT DIGITS (45 MM)



FEATURES

- Depth : 0.5 to 199 m* (1.6 to 652 ft) with keel offset.
- Depth trend indication.
- Deep and shallow alarms.
- Low battery alarm.
- Simulation mode.

*Depends on transducer

	Ref.
DEPTH S400 with Plastimo thru-hull transducer (max. 120 m)	57755
DEPTH S400 with Airmar P19 transducer (max. 199 m)	57756
DEPTH S400, instrument only	57748

Supplied with weather cover.

OPTIONAL EXTRAS

**Connection bus box
(proprietary bus)
57765**

Facilitates connection between S400 instruments (3 instruments maximum) : data sharing, NMEA interface and central 12 V power supply.

Watertight gasket

Lock in screw collar requires no tools to secure to bulkhead





SPEED

LOG-SPEEDO GIANT DIGITS (45 MM)

Delivers all speed, distance, time and temperature data, together with countdown function.

FEATURES

- Water speed : 0-60 knots, 0-69 mph, 0-111 km/h.
- GPS speed if connected to compatible (NMEA0183) navigator.
- Total and trip log.
- Elapsed time and countdown race timer.
- Water temperature.
- Speed trend indication.
- Surface speed high and low alarms.
- Low battery alarm.
- Simulation mode.

	Ref.
SPEED S400 with Plastimo thru-hull, 30kts	57757
SPEED S400 with Airmar thru-hull, 45kts (ST850)	57758
SPEED S400 log-speed, instrument only	57749

Supplied with weather cover.

MULTI

ALL THE FUNCTIONS OF S400 DEPTH AND SPEED

Choice of data displayed on 2 lines.

FEATURES

- Lower line : 22 mm high digits.
- Upper line : 32 mm high digits.
- Depth and speed trend indication.
- Proprietary Bus interface and NMEA0183 input/output.
- Simulation mode.

	Ref.
MULTI S400 with Plastimo thru-hulls (depth + speed transducers)	57759
MULTI S400 with Airmar thru-hulls (depth + speed transducers)	57760
MULTI S400, instrument only	57750

Supplied with weather cover.



WIND

ALL ESSENTIAL WIND DATA ON A DIGITAL DISPLAY

FEATURES

- Instant wind direction information in analogue and digital display
- Data displayed on 2 user-settable lines (upper line 32 mm high, lower line 22 mm high).
- Proprietary bus interface and NMEA0183 input/output.
- Wind speed (0 to 199 knots).
- Wind direction through 360°.
- Wind trend indication.
- Apparent and true* wind angle and speed.
- Wind direction at 1° resolution.
- VMG speed.
- Wind speed alarm.
- Low battery alarm.
- Simulation mode.

* if connected to speedometer delivering surface speed.

	Ref.
WIND, complete with masthead unit + 25 m cable	57751
WIND, instrument only	57752

Supplied with weather cover.



WIND-a

WIND DIRECTION INDICATION ON A 360° ANALOGUE DISPLAY

Same features as WindS400 model.

FEATURES

- Proprietary bus interface and NMEA0183 input/output.
- Simulation mode

	Ref.
WIND-a, complete with masthead unit + 25 m cable	57753
WIND-a, instrument only	57754

Supplied with weather cover.

AdvansSea masthead transducer unit

High quality design incorporating precision bearings and aluminium cantilever arm.

Sensitivity threshold is very low to ensure an optimum accuracy even in light winds. Balanced wind vane for increased accuracy and stability at heel. Sturdy construction and watertight connector. High quality design incorporating precision bearings and aluminium cantilever arm.



Specifications : see page 19.

	Ref.
AdvansSea masthead transducer unit with 25 m cable	57761

TRANSDUCERS

Depth transducers 200 kHz



**Thru-hull Plastimo,
removable
Airmar P19
57767**

200 kHz, beam width 15°. Plastic thru-hull. Drill Ø 48 mm. 8m cable. RCA connector. Max 120 m. Connects to all 200 kHz depth sounders.



**Thru-hull, fixed
Airmar P19
57767**

200 kHz, beam width 12°. Plastic body. Drill Ø 51 mm. 9m cable. RCA connector. Max 200 m. Connects to all 200 kHz depth sounders.



**Thru-hull, bronze
Airmar B22
31358**

200 kHz, beam width 12°. Drill Ø 51 mm. 9m cable. RCA connector. Max 200 m. Connects to all 200 kHz depth sounders.

Depth transducers 50/200 kHz



**In-hull puck,
Airmar P79 dual frequency
54940**

50/200 kHz, beam width 45/11°. 10m cable. LT6F connector. Connects to all 50/200 kHz depth sounders.



**Plastic thru-hull,
Airmar P319 dual frequency
58416**

50/200 kHz, beam width 45/11°. Drill Ø 51 mm. 10 m cable. LT6F connector. Connects to all 50/200kHz depth sounders and to Combo C.56.



**Thru-hull, bronze
Airmar B117 dual frequency
54937**

50/200 kHz, beam width 45/11°. Drill Ø 51 mm. 10 m cable. LT6F connector. Connects to all 50/200 kHz depth sounders.

Speed / Temperature



**Thru-hull, 30 knots
Airmar 40640**

Removable plastic thru-hull fitting. Drill Ø 48 mm. 8 m cable. LT8 connector.



**Thru-hull, 45 knots
Airmar ST850
57768**

Removable thru-hull fitting. Anti-return valve. Drill Ø 51mm. 9 m cable. LT8 connector.



**Thru-hull, 45 knots
Airmar B17
47552**

Bronze thru-hull fitting. Anti-return valve. Drill Ø 51mm. 9 m cable. LT8 connector.

Tri-Function (depth/speed/ temp)



**Thru-hull, bronze
Airmar B744
Dual frequency/speed/temp
53505**

50/200kHz. Beam width 45/11°. Drill Ø 51 mm. 10 m cable. LT6F connector. Connects to all 50/200kHz depth sounders.



**Transom mount Airmar P58
Dual frequency/speed/temp.
57769**

50/200 kHz. Beam width 45/11°. 10 m cable. LT6F connector. Connects to all 50/200 kHz depth transducers.

Comprehensive list of transducers, cables and accessories on www.advantsea.com

	Depth 200kHz			Depth 50 / 200kHz			Speed / Temperature			Tri-Function	
	25983	57767	31358	54940	58416	54937	40640	57768	47552	53505	57769
Multi S400	X	X	X				X	X	X		
Speed S400							X	X	X		
Depth S400	X	X	X								
C.56				X*	X*	X*	X*	X*	X*	X	X

* Cable 47878 is necessary to connect a depth transducer and a speed/temp transducer to a C.56, or a single speed/temp transducer. This cable is not necessary to connect a single 50/200 kHz depth transducer.

FX-400

Fixed VHF radio

Especially developed to compliment the range of advanSea marine instruments, FX-400 is a compact waterproof VHF, offering the latest marine radio-communication and safety at sea innovations.



- Full Class D DSC (ASN) capabilities when interfaced with a GPS.
- Selectable ATIS mode for inland waters.
- Large high resolution display and rotary selection controls.
- IPX7 waterproof construction.
- Ergonomic microphone with alphanumeric keys.
- Compact construction.
- Comes with all accessories as standard.

FEATURES

- 1 or 25 W transmit power.
- IPX7 waterproof construction.
- DSC (Digital Selective Calling) through CH70.
- Large dot-matrix LCD display (62 x 23 mm), 4 lines, adjustable amber backlight and contrast.
- All international channels, 3 authorised local channels, and ATIS mode for inland waters in Holland, Belgium, Germany and France.
- Channel name indication.
- Position data transferred to a connected GPS (through NMEA), in case of distress.
- GPS data display (when connected to a compatible GPS).
- 3 channel scanning modes : Priority, Favourite and General.
- 12 programmed ASN distress messages.
- 32 names and MMSI numbers directory.
- Speaker connector.
- Supplied as standard with bracket, weather cover and bulkhead mount kit.



The ergonomic design of the fist mike provides a secure grip and is weather resistant whatever the conditions. Alphanumeric keys provide quick and easy selection of the menus.

SPECIFICATIONS	FX-400
DSC	Yes
All international channels	Yes + ATIS
Channels selection	Rotary knobs
Transmit power	1 and 25W
NMEA 0183 GPS input	Yes
Power supply	13.6 VDC
Display size	62 x 23 mm (W x H)
Overall dimensions	160 x 69 x 165 mm (W x H x D)
Weight (incl. microphone)	1.150 kg
Bulkhead mount kit	As standard
Microphone	12-key alphanumeric
Speaker output power	3 W mini with 4 ohm (10% distortion) external speaker
Waterproofness	to IPX7

Ref.

FX- 400 VHF RADIO

58594

Handheld VHF

Stemming from the latest communication technologies, the SX-200 and SX-300 handheld VHF offer outstanding transmit and receive performance.

SX-300

The SX-300 handheld VHF floats and has a compact design with corrosion-resistant construction for use in harsh conditions.

FEATURES

- Floating.
- R&TTE approval.
- ATIS mode for inland waters.
- High-resistance compact design.
- Large backlight keys.
- Large backlight LCD display (36 x 24 mm).
- Height : 137 mm without antenna.
- Cigarette-lighter charger (without holder).



The SX-300 VHF comes as standard with all accessories : charger, cable, belt clip, Li-ion battery pack.

	Ref.
SX-300 handheld VHF	58593

Floating !

SX-200

Extremely compact and lightweight, the SX-200 features a large 36x25mm display making it easy to operate.

FEATURES

- Ergonomic design and rubber coating for a perfect hold.
- Lightweight : 241 g including battery.
- Large 36 x 25 mm backlight display.

	Ref.
SX-200 handheld VHF	56724



The SX-200 handheld VHF comes as standard with all accessories : desk charger with holder, 12V cigarette-lighter adaptor, belt clip and Li-ion battery pack.



SX-300

SX-200

SPECIFICATIONS	SX-300	SX-200
Waterproofness	To IPX7	To IPX7
Transmit power	1 or 5 W	1 or 5 W
VHF channels	INT, 99 private channels, list of favourite channels	INT, 99 private channels, list of favourite channels
Mode	Simplex-Duplex	Simplex-Duplex
Battery	Li-Ion pack, 1300 mAh	Li-Ion pack, 1200 mAh
Battery life	11 h (25 h in watch mode)	10 h (25 h in watch mode)
Consumption	Stand-by = 40 mA - RX = 250 mA - TX = 1500 mA/5 W	Stand-by = 40 mA - RX = 190 mA - TX = <1.5 A/5 W, 0.7 A/1 W
Backlight display and keys	Yes	Yes
Unscrewable antenna	Yes	Yes
Double watch	Yes	Yes
Keylock	Yes	No
Weight (incl. battery)	272 g	241 g

Tested in extreme conditions, AdvanSea antennas meet the international standards for salt mist exposure (IEC-68-2-52). High-resistance polyurethane coated antennas designed for lifetime performance.

Compact and unique Fast-Fit connectors supplied with each antenna are welded to the cables ends. For quick and secured factory connection with no need for cutting or soldering once the cable run is completed. An innovative «no-cable» system enables the 120, 130 and 150 antennas to be easily unscrewed from the base, leaving the cable attached to the flat or flush mount bracket. Advansea antennas and bases fit all types of radios.



110 VHF antenna 58578

- 1.10m antenna.
- Includes st. steel whip, st. steel masthead square and standard PL259 connector.
- Add 30m optional cable ref 58584.



120 VHF antenna 58579

- 1.20m UltraGlass antenna, no-cable mount.
- Includes a nylon base.



130 VHF antenna 58580

- 1.80m UltraGlass antenna, no-cable mount.
- Includes a nylon base.



140 VHF antenna 58581

- 1.10m st. steel antenna with lay-down mount and cable.



150 VHF antenna 58582

- 2.50m antenna, no-cable mount.
- Includes UltraGlass whip and st. steel base.



160 VHF antenna 58583

- Supplied with 5m cable and Fast-Fit connectors.
- Includes 2.50m UltraGlass whip and st. steel ferrule.

MODEL	Material	Gain	Impedance	Compatible bases
110	St.Steel	0 dBi / 3 dB	50 ohms	St. steel square, supplied
120	UltraGlass			58585, 58586
130	UltraGlass	3 dBi / 6 dB		58587, 58588
140	St.Steel			58591
150	UltraGlass			58587, 58588
160	UltraGlass			58589, 58590

ACCESSORIES

Cables

58584 : 30-m cable for masthead antenna.

58652 : 5-m extension cable for VHF antenna with Fast-Fit connector.



58585
Plastic ferrule deck mount, «no-cable system» with 5-m cable.



58586
Thru-hull mount, «no-cable system» with 5-m cable.



58587
Plastic ferrule deck mount, «no-cable system» with 5-m cable.



58588
St. steel ferrule deck mount, «no-cable system» with 5-m cable.



58589
Standard plastic ferrule deck mount (1", 14 tpi).



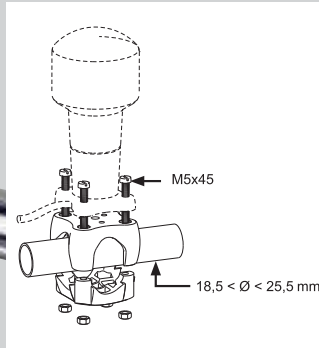
58590
Standard st. steel ferrule deck mount (1", 14 tpi).



58591
Nylon bracket for antenna model 140. Side-mount.



58592
VHF/AM/FM broadcast band splitter, with VHF and car radio plugs.



**Plasticlip for VHF/GPS antenna
58113**

Standard pushpit mount. Suitable for all VHF or GPS antennas (AdvanSea and other brands).

Features :

- 1 Plasticlip, to be adapted on any tube \varnothing 18.5 mm to 25.5 mm.
- 4 st. steel screws and nuts.

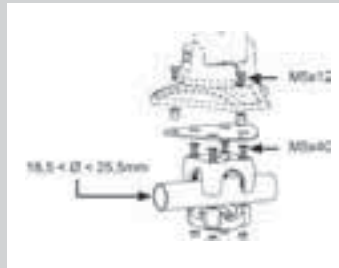
For antenna ref. 57743.



**PA150 external GPS antenna
57743**

Placing an AdvanSea GPS or Combo unit inside a cabin may require an external antenna.

Supplied with 10-m cable, BNC connector and flush mount kit.



**Plasticlip bracket holder
58310**

For T.56 and T.50 GPS, and C.56 Combo.

Features :

- 1 Plasticlip, to be adapted on any rail \varnothing 18.5 to 25.5 mm, designed to fit bracket-mount instruments.
- 2-mm thick plate, 316 stainless steel. Supplied with 7 st. steel screws and nuts.



**Pushpit antenna holder
43257**

For rail \varnothing 18 mm - 27 mm.



**VHF micro bracket
44533**

Dimensions : 35 x 8 x 35 mm (L x h x width).



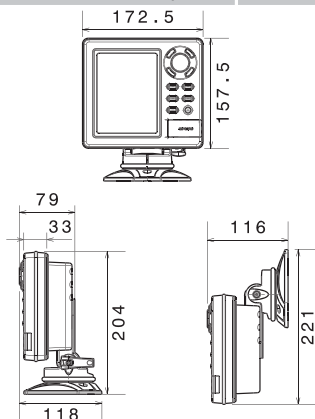
GPS & Combo

C.56

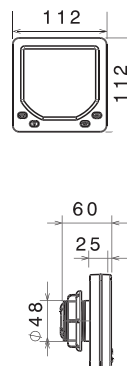
T.56

T.50

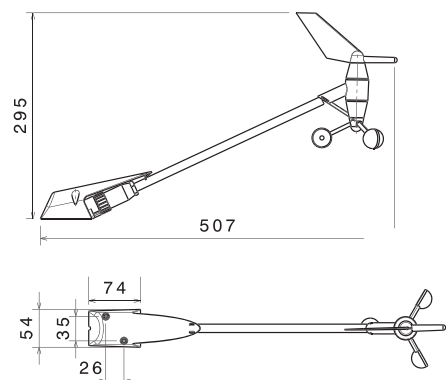
MAIN FEATURES	C.56	T.56	T.50
LCD display type	LCD - TFT- LED backlighting		
LCD diagonal	142 mm (5.6")	127 mm (5")	
Screen Resolution	640 x 480 (VGA)	320 x 240 (QVGA)	
Operating voltage	10-34 V		
Memory	128 Mb		
Embedded chart	World		
Cartography	CMAP NT MAX (SD-Card support)		
GPS antenna type	Integrated, 16 channels / optional: BNC-socket external antenna		
Languages	English, French, Spanish, Italian, Dutch, German, Swedish, Norwegian, Finnish, Danish, Croatian, Greek, Portuguese, Chinese, Korean, Japanese, Russian		
Waypoints	9999		
Routes	250 routes with 500 waypoints per route		
Track logs	Max.10		
Chart display	North / Track / Course		
Plotting scale	0.005 NM/ 500 NM		
AIS compatible	Yes		
DSC compatible	Yes		
Navtex NMEA input	Yes		
MOB hotkey	Yes		
GOTO key	Yes		
Snapshot function	Yes		
Backlit keys	Yes		
Backlit screen	Yes, 10 levels		
Data interfaces	NMEA0183 (2 in & 2 out); NMEA2000		NMEA0183 (2 in & 2 out)
Fuel management	NMEA2000 compatible engines		No
Sonar	Yes (50/200khz)	No	
Max. Depth	600 metres	-	
Output power	600W RMS	No	
Environmental rating	Waterproof to IPX7		
Weather cover	Yes (included)		
Bulkhead mount kit	Yes (Included)		
Simulation mode	Yes		
Internal alarm / External alarm output	Yes / Yes		



GPS & Combo



Sailing instruments



SPECIFICATIONS

S400



DEPTH



MULTI



SPEED



WIND



WIND-a

COMMON FEATURES				
External unit dimensions	112 x 112 mm		112 x 112 mm	
Operating voltage	10V to 16.5V		10V to 16.5V	
Display power consumption	Below 150 mA Incl. backlighting		Below 150 mA Incl. backlighting	
Operating temperature	-10 to + 50° C		-10 to + 50° C	
Storage temperature	-20 to + 60° C		-20 to + 60° C	
Mounting	Flush mount		Flush mount	
Drilling Ø	48 mm		48 mm	
Fixing	Rear locking collar		Rear locking collar	
"O" ring for bulkhead mount	Yes		Yes	
Buzzer/external alarm output	Yes / Yes		Yes / Yes	
Screen	Monochrome LCD, TN technology (Twisted Nematic)		Monochrome LCD, TN technology (Twisted Nematic)	
Backlit keys	Yes		Yes	
Backlit screen	Yes, amber, 5 levels (Off, 1, 2, 3, 4)		Yes, amber, 5 levels (Off, 1, 2, 3, 4)	
Anti-fogging screen	Yes		Yes	
LCD	Transflective		Transflective	
Waterproof rating	IP66 front face		IP66 front face	
Intuitive menu	Yes		Yes	
Weather cover	Yes		Yes	
Simulation mode	Yes		Yes	
INSTRUMENTS SPECIFIC FEATURES				
Depth range	0.5 to 199 m		-	-
Water speed	-	0 to 60 knots		-
Depth speed	-	Yes if connected through NMEA0183		-
Wind speed	-	-	-	0 to 199 knots
Wind direction	-	-	-	0 to 180° Port-Starboard 0° / 359°
True wind	-	-	-	If connected to speedometer with surface speed
Depth resolution	0.1 m from 0 to 19.9 m / 1 m from 20 to 199 m		-	1° in direction
Speed resolution	-	0.01 knt from 0 to 19.99 knt / 0.1 knt from 20 to 60 knt	0.1 knt from 0 to 19.9 knt / 1 knt from 20 to 199 knt	
Display damping	1 - 30 steps		1 - 30 steps	
NMEA0183 input ports	1		1	
NMEA Input sentences	Speed : VHW/VTG/VLW/MTW/RMC - Depth : DPT / DBT Multi : VHW/VTG/ DPT/VLW/ MTW/ RMC/ DBT		VHW / VTG / MWV / RMC / VWR	
NMEA0183 output ports	1		1	
Output sentences	DBT/ DPT	VHW/ VLW/ MTW/ DBT/ DPT	VHW/ VLW/ MTW	VPW / MWV / VWR
Proprietary bus	Half-Duplex series connection (38400 bauds on one wire)		Half-Duplex series connection (38400 bauds on one wire)	
Countdown	-	Yes	Yes	-
Digits size	45 mm	45 mm	Upper line : 32 mm Lower line : 22 mm	Upper line : 32 mm Lower line : 22 mm
Units	°F & °C - Feet - Metres - Knots - Km/hr - Miles/hr - V - Miles - Km		Degrees - M/s - Beaufort - Knots - Km/hr - Miles/hr - V	
Alarms	High & low depth / Low battery	Deep & shallow speed/ High & low depth / Low battery	Deep & shallow speed / Low battery	Strong wind / Low battery

Service and warranty

For offers and conditions : Consumer Service on www.advantsea.com



All our instruments come with a 2-year warranty. Transducers and antennas 1-year warranty.

Engineered and manufactured by marine electronics specialists, the advanSea series offers top performance, designed for the extremes of marine environment.

By purchasing an advanSea instrument, you will benefit from the worldwide support of the Plastimo network.

Plastimo's extensive network of distributors ensures that no matter where you cruise, expert technical advice and unrivalled service is always available.

advanSea




PLASTIMO
a navimo group company