

PowerFilm[®]

SOLAR

MADE IN THE USA

7 Watt Rollable Solar Panel

The 7 Watt Rollable Solar Panel is lightweight, durable and extremely portable.

The solar panel is fully waterproof and constructed with marine grade connectors to provide a portable solar solution for any wet environment.

Unmatched durability allows for use in even the harshest environments and a panel that works even after a portion is damaged.

This compact panel only weighs a pound and is perfect to keep boat batteries topped off and provide power for a wide range of electronics.

The 7 Watt Rollable Solar Panel keeps you connected, powers your outdoor life and helps you get more out of your outdoor adventures.

Tips For Best Use:

- Angle the solar panel toward the sun for best results.
- Always store in a cool dry environment.
- Allow time to air dry before packing if the panel is wet.
- Routinely clean the solar panels to ensure best performance.



Benefits Include:

- Rolls up compactly
- Easy to deploy and easy to store.
- Waterproof / IP67 rated
- Light sensitive technology turns on early in the day and stays on later in the day.
- Multiple charging adapters to fit your needs and charge a wide range of devices.
- Designed, engineered and manufactured in the United States.

Rollable Charging Capabilities

Rollable Solar Panels are perfect for keeping 12V batteries topped off and ready to go when you are. Connect up one of our weatherproof panels and start your boat, car, RV or ATV the first time.

Certifications:

- CE
- MIL-STD-810G
- RoHS
- Berry Amendment Compliance

PowerFilm[®]

SOLAR

MADE IN THE USA

7 Watt Rollable Solar Panel

Electrical Characteristics

Rated Voltage at Pmax	15.4V
Rated Current at Pmax	0.4A
Open Circuit Voltage	21.9V
Short Circuit Current	0.5A

Physical Characteristics

Part Number	R-7
Rolled Dimensions	14.6 x 3.0 inches 370.8 x 76.2 mm
Unrolled Dimensions	22.8 x 14.6 inches 579.1 x 370.8 mm
Weight	1.0 lbs 0.3 kg

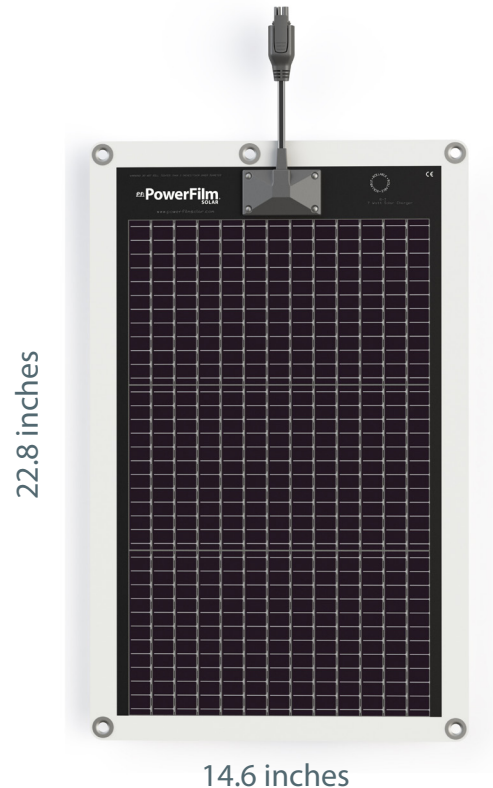
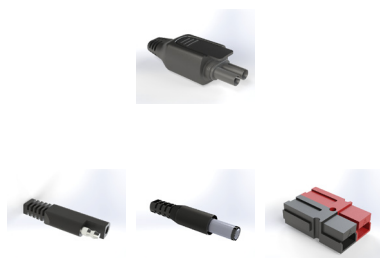
Thermal Characteristics

Temperature Coefficient for Power	- 0.200 (%/C)
Temperature Coefficient for Voltage	- 0.240 (%/C)
Temperature Coefficient for Voc	- 0.300 (%/C)
Temperature Coefficient for Isc	0.109 (%/C)

Connectors

Standard Connector:
Delphi Weatherpack

Custom Connectors:
SAE
4.5 MM Barrel
Anderson Powerpole



IV Curve

