

# AIT6000

**Nucleus Class B + AIS Transponder with SPAIS™ satellite AIS compatibility, alerts & an integrated NMEA 2000 wifi Gateway**

## New Product Introduction

Digital Yacht AIT6000  
Part Number: ZDIGAIT6000  
UPC: 703791696963  
SRP ex vat: 1095€ ex vat  
Availability: Q2 2026



TEL - +44 1 223 967 210

[www.digityacht.eu.com](http://www.digityacht.eu.com)

# AIT6000

The AIT6000 is Digital Yacht's new Class B+ AIS transponder, set to replace the AIT5000. It retains all the features that made the AIT5000 successful—an integrated and patented ZeroLoss VHF antenna splitter, 5W SOTDMA transmissions and NMEA 0183, NMEA 2000, wireless and USB interfaces—while introducing several major innovations:

## SPAIS™ Satellite Tracking

The AIT6000 incorporates Digital Yacht's exclusive SPAIS™ (Space AIS) technology, providing true vessel tracking capability through AIS transmissions optimized for satellite reception.

## Integrated NMEA 2000 Gateway

The new AIT6000 now includes a built-in NMEA 2000 gateway, allowing its Wi-Fi interface to transmit not only AIS, GPS, and NMEA 0183 data, but also instrument data from the NMEA 2000 network. As a result, no data conversion is required—navigation data from the NMEA 2000 network is accessible via Wi-Fi directly from the AIT6000.

## New Web Interface with Integrated Alarms

The AIT6000 also features a new intuitive web interface with built-in navigation alarms. Through this interface, users can configure CPA/TCPA alerts and many other settings for safer and more customized navigation.

**Integrated ZeroLoss antenna splitter shares main VHF antenna with AIS and VHF plus provides FM radio output**



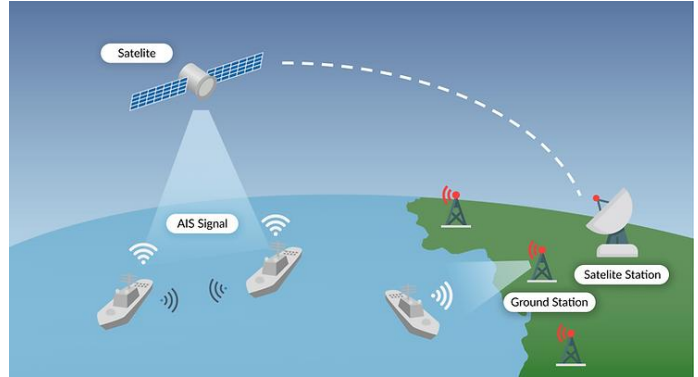
**Full NMEA 2000 integration plus wireless output providing GPS, AIS and instrument data for 100s compatible apps**

**Wireless interface for tablet and iPad setup, alarms, monitoring and control. Can also join an existing on board wifi network**

# AIT6000 - SPAIS™ Satellite Tracking

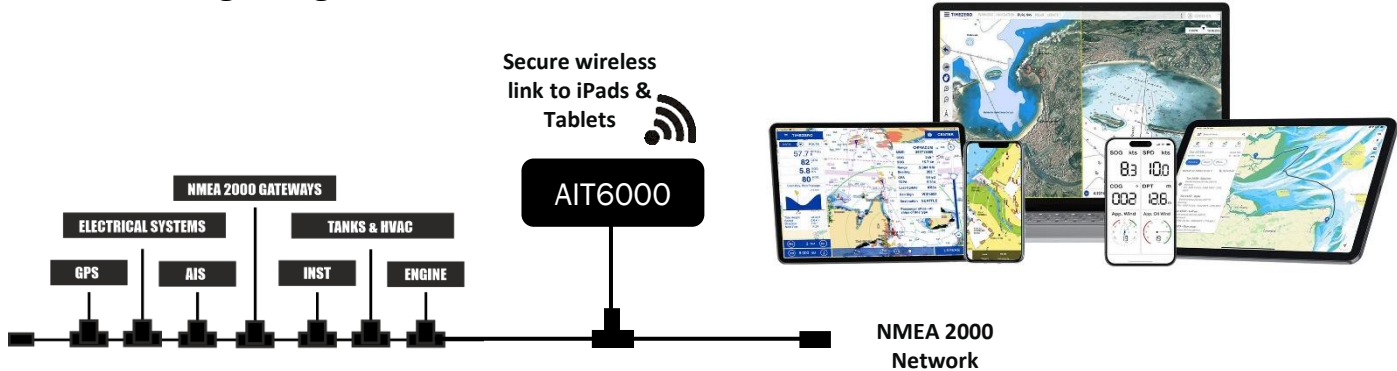
In addition to the latest Class B+ SOTDMA technology, the AIT6000 also incorporates Digital Yacht's latest SPAIS™ (space AIS) connectivity with additional transmissions now enabled for reception by AIS satellites for true ocean tracking capability.

- Transmissions can be optionally enabled
- Additional safety and security with global satellite AIS tracking capability
- Turns the AIT6000 into a global tracking solution
- Enhanced services for the future with over the horizon and LR AIS



# AIT6000 – NMEA 2000 Gateway & Wi-Fi Interface

- Secure password protected Wi-Fi interface provides data for 100s compatible apps.
- Allows the AIT6000 to always act as an independent navigation hub using a tablet or iPad
- AIT6000 adds better interfacing capability through this wireless interface with not just AIS and GPS data from the transponder being available for the navigation apps & software but also **boat** instrument data from the NMEA 2000 network– such as depth, heading, speed and wind information.
- Multiple devices can connect using standard TCP/IP or UDP options
- Data filtering through wireless interface

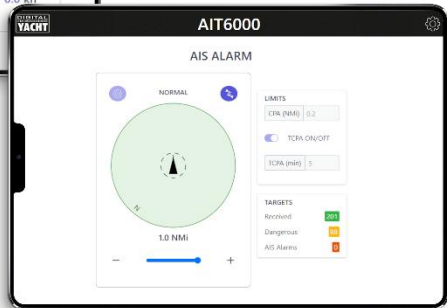
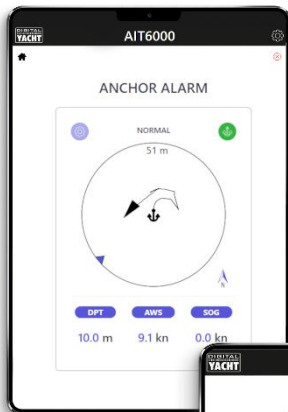


# AIT6000 – Collisions & Anchor Alarms

- Advanced alarms and apps built in for CPA collision alerts (closest point of approach) and TCPA (time to closest point of approach)
- Sophisticated anchor drift alert which allows for scope of chain and water depth to optimise alerting radius
- Alerts also sent on the NMEA 2000 network
- NMEA 2000 Compatible with Digital Yacht NavAlarm for ultra loud alert
- Switched output on the AIT6000 power/data cable enables connection to an external alarm sounder or system

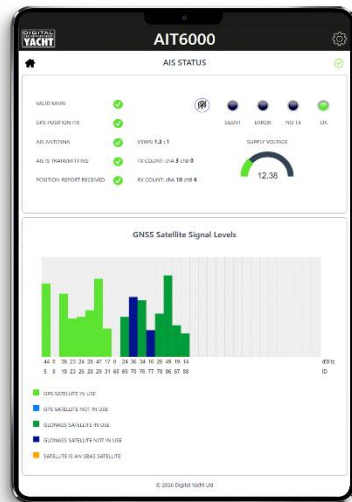
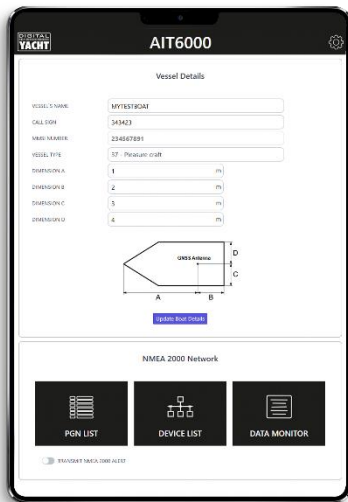
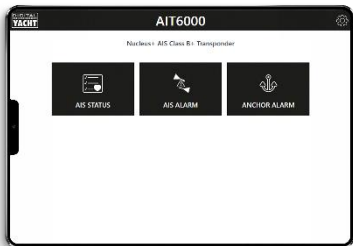


Integrated apps for CPA/TCPA alerts allow the transponder to be constantly monitoring dangerous targets without the need for a MFD display. Alerts are also passed onto the NMEA 2000 network and can active NAVAlarm, an ultra loud sounder as well as creating pop-up messages on MFDs



# AIT6000 – Web Interface for Configuration

- Connect to the AIT6000 using any mobile device with a browser – phone, tablet, PC or MAC. No app required
- Configure the AIT6000 via the web interface
- Check transponder diagnostics and operation
- Merge AIS Wi-Fi with an existing onboard network
- Option to silence AIS transmission



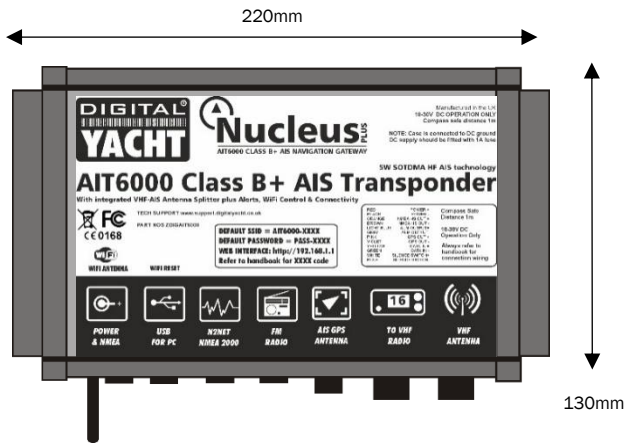
# AIT6000 – Installation & Integration

- Fits quickly - integrated ZeroLoss VHF antenna splitter allows main VHF antenna to be shared with AIS and VHF and provide an additional FM radio output
- Supplied with GPS antenna
- NMEA 0183 AIS (38400 baud output for legacy systems AND separate GPS data output (4800 baud) for DSC VHF
- NMEA 2000 connectivity with alerts
- USB (for PC & MAC)
- Wireless interface – the AIT6000 can be a stand alone access point or join an existing boat wifi network
- Universal works with any AIS compatible plotter or multi function display



Full NMEA 2000 integration with wireless output providing GPS, AIS and instrument data for 100s compatible apps

Simply disconnect the main antenna from the VHF radio and connect to the AIT6000. Use the supplied patch cable to connect transponder and VHF to enable antenna sharing



## Further information

Digital Yacht

TEL +44 1 223 967 210

[www.digitalyacht.eu.com](http://www.digitalyacht.eu.com)

### AIT6000 Key Specifications

<b>Power</b>	10-30V DC 5W
<b>Interface</b>	NMEA 0183 INPUT 4800 BAUD Multiplexer from NMEA In 4800 to NMEA Out 38400 NMEA 0183 OUTPUT 4800 BAUD - GPS DATA FOR DSC VHF NMEA 0183 OUTPUT 38400 BAUD (GPS/AIS) NMEA 2000 USB Alarm switched output Password protected WiFi 802.11 UDP or TCP/IP Optional silence switch FM radio antenna output (fitted 75 ohm connector)
<b>Dimensions</b>	220 x 130mm Waterproof to IPX5
<b>VHF antenna connections</b>	S0239 for VHF antenna S0239 for VHF radio (patch cable supplied)
<b>GPS antenna connection</b>	TNC Supplied with MA800 GPS antenna with 10m cable
<b>Retail price</b>	1095€ excluding VAT
<b>Supplied with</b>	MA800 GPS antenna 3dBi WiFi antenna 0.8m NMEA 2000 drop cable (male) 0.8m NMEA 0183 power-data cable 0.8m USB cable Mounting brackets PL259 patch cable for VHF