



PRODUCT CATALOG  
2021



---

# CONTENTS

## C-pod

- 3 C-pod Base Package
- 4 Intrusion Detectors
- 5 Environment Detectors
- 6 Remote control
- 7 Cables and Connectors
- 8 Siren
- External antennas

## C-pod Lite

- 9 C-pod Lite Start Kit

## C-pod ELite

- 10 C-pod ELite Start Kit



## C-pod Base Package Part no: P1703-141

The C-pod Base package is the start kit that includes everything that is needed to install the C-pod main unit.

Included in the box:

- C-pod main unit
- Fastener for the main unit
- GPS antenna
- Cellular (GSM) network antenna
- Magnetic intrusion sensor
- Power cable
- Activation button
- Hook-and-loop fastener for the GPS antenna
- Manual



## C-pod Features

- ✓ Flexible system  
The C-pod system is designed to be flexible. All sensors and detectors can be fitted to a Hub allowing the installation to grow and up to 6 sensors can be installed on each alarm loop.
- ✓ Geofence alarm  
The C-pod continuously monitors the boat's position through the built-in GPS and sends an alarm if it moves more than 200m
- ✓ Battery disconnect alarm  
If the external power is cut the C-pod sends an alarm before converting to the internal back-up battery
- ✓ Battery level warning  
The user can select a battery voltage threshold to get a warning when it is time to charge the boat's batteries or to detect when shore power is not available
- ✓ Communication warning  
The system actively monitors each C-pod unit every hour. If the unit goes offline a notification is sent to the user. The user is thus assured that the system is fully operational.
- ✓ Sensor alarms  
Possibility to add up to 12 sensors to detect intrusion, theft, water, smoke or other hazards onboard.
- ✓ Remote equipment management  
Possibility to add a relay to turn on/off electronics remotely.



## Technical specification

- Dimensions (WxHxD): 180x110x40mm
- Weight: 299g
- Supply voltage: 10 – 30V DC
- GSM quadband modem (850, 900, 1800 and 1900 MHz)
- 12 Channel GPS, -152 dBm sensitivity
- 2000mAh Li-Ion backup battery
- 2 sensor loops with up to 6 daisy-chained sensors each
- 1 output for siren or relay (remote switching)
- Average power consumption 25 – 30 mA
- Operating temperature -15° to 55°C / 5° to 131°F
- CE & FCC approved

## Intrusion Detectors



### Motion Detector 12V (PIR), Part no: P1703-404 or P1703-405

The industry's best detection accuracy, false alarm immunity and ultimate long term reliability with Fuzzy Logic algorithm (TMR), and state-of-the-art 3D cylindrical optics.

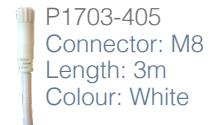
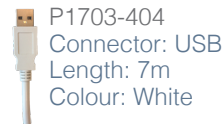
#### Features

- White light and UV protection
- Easy to install no vertical adjustment
- Sealed optics - Protects from insects and air currents
- Digital temperature compensation

#### Technical specification

|                        |                      |
|------------------------|----------------------|
| Operating Voltage:     | 9 to 16 VDC          |
| Standby Current Drain: | 8 mA at 12 VDC       |
| Sensitivity:           | 2 motion events      |
| Operating temperature: | -10°C to 50°C        |
| Dimensions (LxWxH):    | 94,5 x 63,5 x 49,0mm |

#### Available in:



### Magnetic Detector 12-24V , Part no: P1703-435 or P1703-436

Magnetic sensor for door or hatch. Will notify you of break-in or if you have forgotten to close a door or a hatch after your boating session.

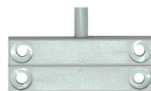
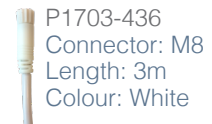
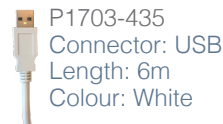
#### Features

- Surface Mount Magnetic Contact
- Recessed mounting holes make for clean-looking installations.
- Designed to prevent moisture from entering and causing false alarms.
- Neat and tidy design

#### Technical specification

|                     |                    |
|---------------------|--------------------|
| Operating Voltage:  | 9 to 25 VDC        |
| Max operating gap:  | 15 mm              |
| Dimensions (LxWxH): | 50,8 x 14 x 9,53mm |

#### Available in:



### Safety loop 12-24V, Part no: P1703-451 or P1703-454

The Safety loop is a simple yet effective sensor for protecting outboard engines, tenders or Jet Skis from theft. Fasten the loop inside the engine or to your valuable belonging, if the loop is broken an alarm will go off immediately.

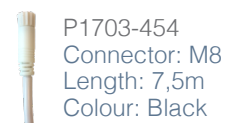
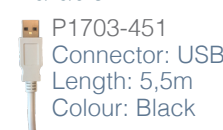
#### Features

- Two split cable connected with phono contact
- Tamper proof

#### Technical specification

|                        |               |
|------------------------|---------------|
| Operating Voltage:     | 5 to 30 VDC   |
| Operating temperature: | -40°C to 70°C |

#### Available in:





## Environment Detectors



### Water Level Sensor 12V, Part no: P1703-442 or P1703-441

Will notify immediately if your boat has reached a critical water level. Reasons vary but heavy rain and bilge pump malfunctions are most common.

#### Features

- Will Detect Any Conductive Non-Flammable Liquid
- Automatic Reset



#### Technical specification

Operating Voltage: 12 or 24 VDC  
 Dimensions (LxWxH): 63,5 x 13,2 x 13,97mm

#### Available in:

|   |  |   |   |
|---|--|---|---|
|  | P1703-442<br>Connector: USB<br>Length: 7m<br>Colour: White |  | P1703-441<br>Connector: M8<br>Length: 7m<br>Colour: White |
|---|--|---|---|



### Smoke Detector 12V, Part no: P1703-452 or P1703-453

The smoke and heat detector is designed to respond to a wide spectrum of fires and ease installation. The multisensors use Advanced Photoelectric Technology in conjunction with the fixed temperature heat sensor to further extend its capabilities as a smoke detector. Every unit is individually tested and calibrated to ensure high reliability and prevent false alarms.

#### Features

- Advanced photoelectric smoke sensing technology
- Highly immune to false alarms
- Dual LEDs for 360° visibility
- Easy installation and maintenance



#### Technical specification

Operating Voltage: 12 VDC  
 Detection Range: 100 m<sup>2</sup> (smoke) 50m<sup>2</sup> (heat)  
 Operating temperature: -10°C to 50°C  
 Dimensions (D x H): 10mm x 46mm

#### Available in:

|   |  |   |   |
|---|--|---|---|
|  | P1703-452<br>Connector: USB<br>Length: 7m<br>Colour: White |  | P1703-453<br>Connector: M8<br>Length: 3m<br>Colour: White |
|---|--|---|---|



### Smoke Detector 24V, Part no: P1703-457 or P1703-458

The smoke and heat detector is designed to respond to a wide spectrum of fires and ease installation. The multisensors use Advanced Photoelectric Technology in conjunction with the fixed temperature heat sensor to further extend its capabilities as a smoke detector. Every unit is individually tested and calibrated to ensure high reliability and prevent false alarms.

#### Features

- Advanced photoelectric smoke sensing technology
- Highly immune to false alarms
- Dual LEDs for 360° visibility
- Easy installation and maintenance



#### Technical specification

Operating Voltage: 24 VDC  
 Detection Range: 100 m<sup>2</sup> (smoke) 50m<sup>2</sup> (heat)  
 Operating temperature: -10°C to 50°C  
 Dimensions (D x H): 10mm x 46mm

#### Available in:

|   |  |   |   |
|---|--|---|---|
|  | P1703-457<br>Connector: USB<br>Length: 7m<br>Colour: White |  | P1703-458<br>Connector: M8<br>Length: 3m<br>Colour: White |
|---|--|---|---|

# C-pod

## Low Temperature Sensor 5°C, to 48V, Part no: P1703-447 or P1703-448

The temperature Power Sensor (TPS) is the high performance control type thermostat equivalent to the performance of electronic thermostat. The sensors are pre-set with a temperature limit. When the ambient temperature goes below the trip temperature limit, the switch configuration will change.



### Features

- Fixed Temperature Sensors 5° C
- Easily mounted with one screw
- Automatically reset

### Technical specification

Maximum Temperature: 64° C / 147° F

Activation Temperature:

Nom. 5° C (41.0° F) Max. 9° C (48° F) Min. 1° C (34° F)

Tolerance:

+/- 4° C (+/- 7.2° F)

Dimensions (LxWxH):

40,0 x 1,25 x 0,64mm

### Available in:

P1703-447

Connector: USB

Length: 7m

Colour: White

P1703-448

Connector: M8

Length: 3m

Colour: White

## Remote control

### Relay, Part no: P1703-411 or P1703-412

The relay is used to switch on/off onboard equipment remotely. Turn on a heater, light or the fridge from a distance!



### Features

- Small size, heavy duty.
- Low contacts voltage drop (<3mV/A), reduce circuit consumption and noise.
- Contact structure, performance reliable, with plug-in pins, handle with ease.

### Technical specification

Operating Voltage:

12V or 24V

Switching voltage:

14 VDC or 28 VDC

Switching current:

30 A or 10 A

Operating temperature:

-40°C to 80°C

Dimensions (LxWxH):

28 x 28 x 53mm

### Available in:

Connector: USB

Length: 5m

Colour: Black



## Cables and Connectors



### Connection Kit (USB-M8, 5m & Hub), Part no: P1703-415

#### Features

- Used if more than 1 sensor is used on an alarm loop.
- Includes:
  - 1 x USB-M8 cable (P1703-346)
  - 1 x Hub (P1703-410)

#### Specification

Operating Voltage: 0 to 30 VDC  
 Length: 5m  
 Colour: White



### Connection Cable USB - M8, 5 m, Part no: P1703-346

#### Features

- Used to connect a Hub to the C-pod

#### Specification

Operating Voltage: 9 to 16 VDC  
 Length: 5m  
 Colour: White



### Extension Cable M8 - M8, Part no: P1703-355 or P1703-359

#### Features

- Used to connect two Hub's with each other.
- Necessary if more than two sensors are used on an alarm loop

#### Specification

Operating Voltage: 12 to 24 VDC  
 Length: 5m or 10m  
 Colour: Black or White



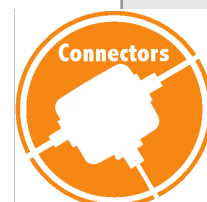
### Hub (3 x M8) incl. End Connector, Part no: P1703-410

#### Features

- Used if more than 1 sensor is used on an alarm loop or if a greater distance is needed for installation.

#### Specification

Operating Voltage: 12 to 24 VDC  
 Colour: White



# C-pod

## Siren



### Siren, Part no: P1703-406

Sounds if a sensor goes off on your boat and attention will immediately be drawn to your vessel. This small siren allows it to be surface mounted in almost any location. The high IP rating allows it to be used in most environments.

#### Features

- High IP rating for marine environments
- Small size
- Surface mounted
- Low operatin current ~18mA

#### Technical specification

Operating Voltage: 9 to 28 VDC  
Sound Output: 92dB  
Protection: IP65  
Operating temperature: -25°C to 70°C  
Dimensions (DxH): 60mm x 43mm

#### Available in:

Connector: USB  
Length: 7m  
Colour: White



## External antennas

### External GPS and GSM antenna, Part no: P1703-409

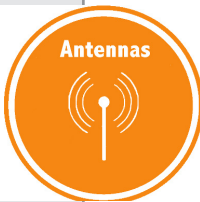


#### Features

- Comes in white colour
- 27 dB Gain GPS
- GSM band
- High IP rating for marine environments
- Wide temperature range

#### Technical specification

Length: 10m  
GPS  
Frequency: 1575.42 MHz  
Power Gain: 27 dB  
Noise figure: Max 1.8  
GSM  
Frequency: Quadband 4 dBi gain  
Overall Performance  
Operating temperature: -40°C to 85°C  
Dimensions (DxH): 64,5mm x 14mm  
Protection: IPx7



### GSM Antenna, Part no: P1703-408



#### Features

- Comes in black colour
- Robust 90° joint antenna
- Three "snap in" positions 0-45-90°
- Gain 1,5dBi

#### Technical specification

Frequency: 868, 850/900/1800/1900, 2400 MHz  
Gain Average: 1.5 dBi  
Polarization: Vertical  
Operating temperature: -20°C to 60°C  
Dimensions (DxH): 9,3 x 104mm



## C-pod Lite Start Kit Part no: P1703-131

The C-pod Lite Start Kit is all you need to protect your asset for over a year! 12- months subscription included.

Included in the box:

- C-pod Lite unit
- Fastener for the unit (Permanent adhesive tape)
- Manual



## C-pod Lite Features

- ✓ **GeoFence alarm**  
Immediately receive an alarm if your vehicle has moved more than 100m (109yd)
- ✓ **Low power consumption**  
C-pod Lite will last for two years without changing the battery.
- ✓ **Small**  
The C-pod Lite has the same size as a deck of cards which makes it easy to hide.
- ✓ **Global coverage**  
The unit comes with a pre-fitted SIM card that has world wide coverage. There are no extra fees for roaming.
- ✓ **Unlimited number of alarm receivers**  
There are no limit to the number of people you can add to receive alarms.



## Technical specification

- Dimensions: 118 mm x 69.5mm x -26.8mm
- Weight: 105g (without batteries)
- GSM quad-band (850, 900, 1800 & 1900 MHz)
- GPS: 50-channel GPS receiver.
- Positioning accuracy: <2.5m
- Batteries: Three lithium batteries, 1500 mAh
- Waterproof: IPX7
- Working temperature: -20 ° C ~ + 60 ° C
- Standby time: ~ 700 days
- Reporting for five minutes, 4 reports per day.
- Continuous reporting every ten (10) minutes in alarm mode
- CE & FCC approved



## Battery pack, Part no: P1703-201

When the internal batteries are low they can easily be replaced with the replacement battery pack.

### Technical specification

Three lithium batteries, 1500 mAh

# C-pod ELite

## C-pod ELite Start Kit Part no: P1703-136

The C-pod ELite Start Kit is all you need to track your asset! 12- months subscription included.

Included in the box:

- C-pod ELite unit
- Fastener for the unit (Permanent adhesive tape)
- Manual

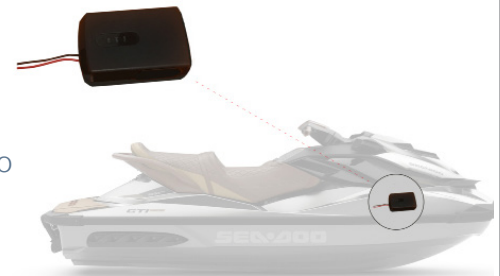


## C-pod ELite Features

- ✓ Always online
- ✓ GeoFence alarm  
Immediately receive an alarm if your vehicle has moved more than 100m (109yd)
- ✓ Small  
The C-pod ELite is our smallest tracker which makes it easy to hide. It is about the same size as a match box.
- ✓ Global coverage  
The unit comes with a pre-fitted SIM card that has world wide coverage. There are no extra fees for roaming.

Unlimited number of alarm receivers

There are no limit to the number of people you can add to receive alarms.



## Technical specification

- Dimensions: 70 mm x 46 mm x 17,5 mm
- Weight: 62g
- GSM quad-band (850, 900, 1800 & 1900 MHz)
- GPS: 50-channel GPS receiver.
- Positioning accuracy: <2.5m
- Waterproof: IPX6
- Working temperature: -30 ° C ~ + 80 ° C
- Continuous reporting every 10 minutes in alarm mode
- Battery backup time in alarm mode: ~ 90 hour battery backup (reporting every 10 minutes).
- CE & FCC approved







Vretenvägen 13  
17 154 Solna, Sweden  
Phone: +46 8 5000 10 52  
Mail: [sales@c-pod.com](mailto:sales@c-pod.com)  
web: [www.c-pod.com](http://www.c-pod.com)