

EcoFlow DELTA Pro Ultra

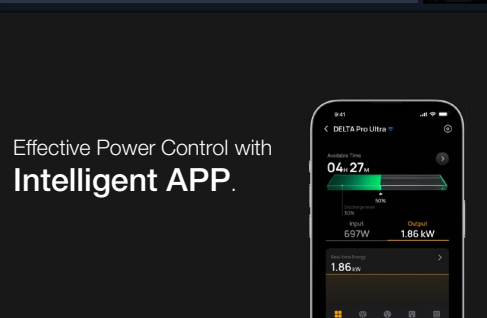
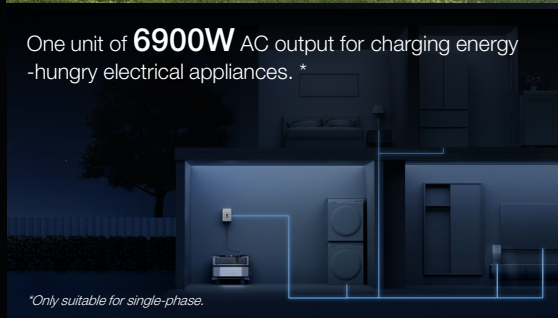
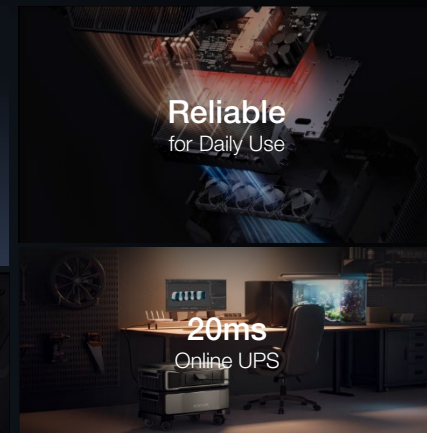
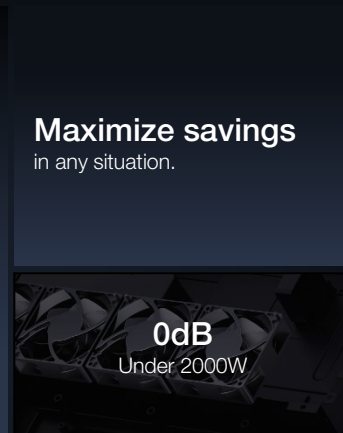
Engineered to Outperform



2025/Retail Management Department

Note: Data Collected by April 2025

Why EcoFlow DELTA Pro Ultra Stands Out



6900W AC Output from a Single Unit Power Your Entire Home Including a High-power Appliance

Equipped with X-Fusion technology, this unit delivers AC output with a continuous power of 6900W and a peak of 10.3kW for 10 seconds-even while charging. It sets a new standard in the home backup power industry.

6900W

AC Output

10300W

Peak Output

Power Supply for

High-power Appliance



Expandable Up to 30kWh Stack, Plug, and Power in Just One Minute

The world's first LFP Portable Power Station starting at 6kWh, scalable up to 30kWh in 6kWh increments. Its stackable, plug-and-play design makes expansion fast and space-efficient.

6kWh

Starting Capacity

30kW

Max Expandable Capacity

Stackable Design

for Space-saving Installation



Build Your Own Solar System with 5.6kW PV Input

The world's first portable power station with 450V high-voltage PV input. A single inverter supports up to 5.6kW solar input-enough to connect up to ten 400W panels in series, empowering users to create their own home solar system and achieve true energy independence.

5600W (4000W+1600W)

Max Solar Input Power

80-450V

High PV Input Voltage Range

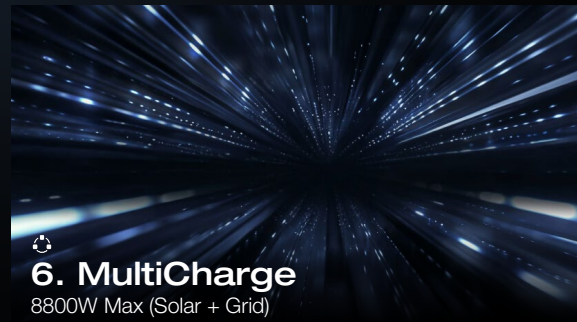
0-150V

Low PV Input Voltage Range



Always in Charge Even with an EV Pile

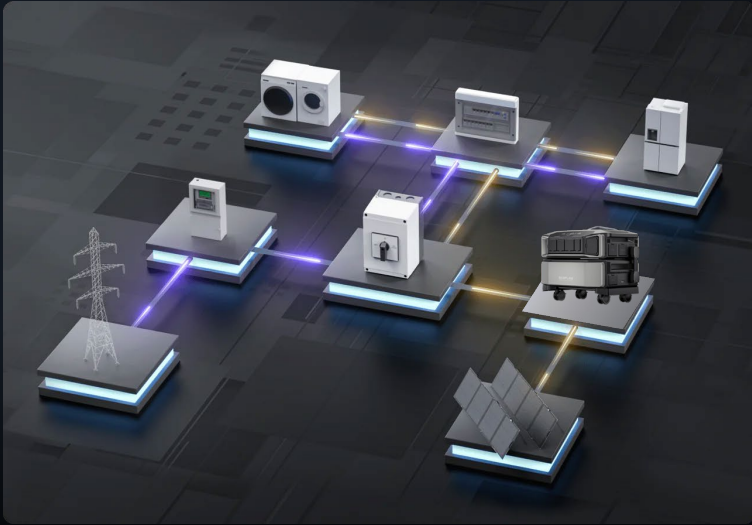
With 6 recharge methods including grid, solar, EV charger, and generator, this system features industry-leading 8800W multi-charge capability. Whether during blackouts or emergency getaways, it ensures fast, reliable power when you need it most.



1 Way to Flexibly Connect EcoFlow DELTA Pro Ultra to Your Home for Daily Use or Backup

The Manual Transfer Switch allows you to seamlessly switch between a utility power source and a portable power station at any time. At night, by fully transitioning to the EcoFlow DELTA Pro Ultra with the Manual Transfer Switch, you can utilize the solar energy stored during the day to power the whole-home and reduce your electricity costs.

Even during blackout, you could also achieve whole-home backup with MTS, which is simple to operate, cost-effective and do not require permit, complex settings or maintenance.



Product Specifications

Voltage:	690V AC
Frequency:	50/60 Hz
Amps:	63A at AC-23A
Circuits:	4 contact units
Enclosure:	IP65, NEMA 12
Color:	Black and white
Warranty:	1 year
Dimensions (W x H x D):	240 x 197 x 160 mm
Shipping Weight:	1.435 kg (3.16 lb)

Maximize Energy Savings Anytime, Anywhere

Whether you're commuting with an **EV**, powering **energy-hungry laundry appliances**, or enjoying life in an **off-grid home**, self-powered mode maximizes solar use once backup reserves are met. Combined with **whole-home backup** via MTS and scheduled charge/discharge features, you can slash bills and stay powered without permits or complex setup.

Enjoy Free Commuting Everyday with EV

Save on electricity bills by using solar charging during the day and recharging EV at night.

Cleaner and Greener in Your Laundry Room

Save on electricity bills by using solar charging during the day and meet heavy-draw demands in your laundry room (washing machine, dryer, etc.)

Easy Installation with MTS, Live Freer Even During Blackout

Simple to operate and cost-effective, do not require permit, complex settings or maintenance.

Relax with Easy Off Grid House Power / Vacation House Power

Save on electricity bills by fully leveraging solar panels in off-grid living without compromising the life quality.

Half Bills Double Happiness

Save on electricity bills by using off-peak energy charging and discharging during peak hours.

20 ms Downtime, 0 dB Silent Backup

With an online UPS ensuring $\leq 20\text{ms}$ switch-over time, your essential devices stay protected from outages or grid instability. Under 2000W loads, it operates at 0 dB for a silent and undisturbed night's sleep—no noise, no worries.

20ms

Online UPS Transfer Time

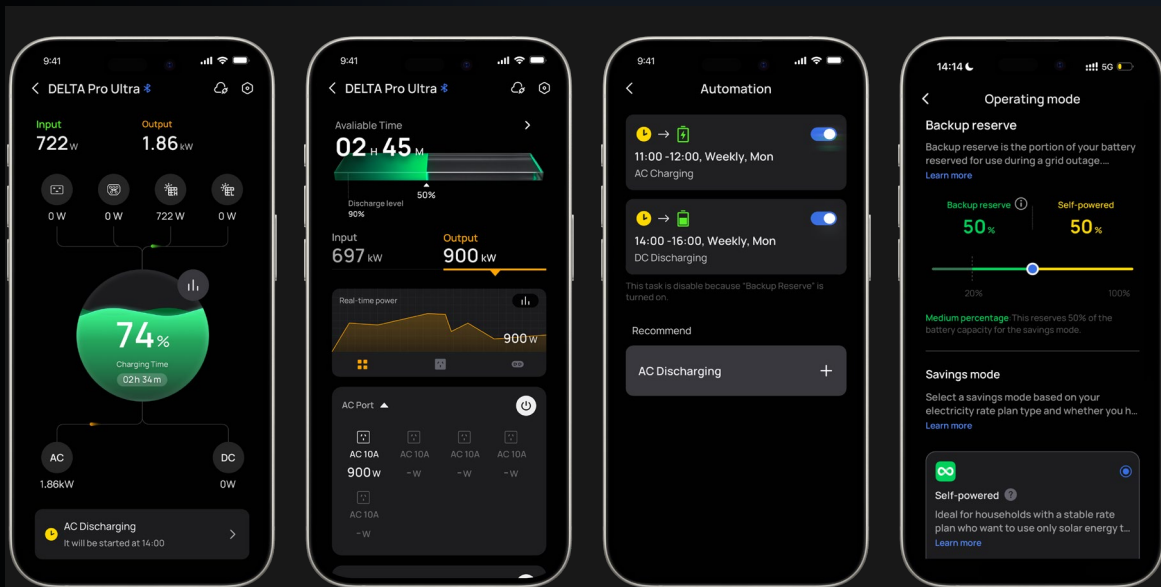
0dB

Noise Level under 2000W



Smart Energy in Your Hands

The EcoFlow App gives you real-time control and full visibility of your energy usage-track consumption from the grid, battery, solar, and generator, plus monitor charging/discharging performance across devices with a personalized dashboard.



Monitor

Control

Customize

Self-powered Mode

Supported third-party brands



Reliable for Daily Use

EcoFlow DELTA Pro Ultra tackles even the most grueling conditions. Whether it's extreme weather or freezing winters, this giant safeguards your power security, just like usual.



Operating Temperatures: -20°C to 45°C

(Auto-heating for Winter Proof)



X-Cooling Cooling System



Excellent Battery Pack

(LFP Battery, Boost Performance BMS
and SOC Balancing Technology)



IP54 Dustproof and Splashproof

Innovative Design



DELTA Pro Ultra General Specifications

Net Weight	Inverter: 32.1kg, Battery: 52.7kg
Product Dimension	Inverter: 690 x 481 x 214 mm, Battery: 660 x 455 x 204 mm
Battery Capacity	6144Wh
Wi-Fi	Supported
Bluetooth	Supported
Screen	Supported
Grid-tied	Unsupported
Standby Power Consumption	<12W
Maximum Operating Altitude	9842.5ft
Warranty	Inverter: 5 years, Battery: 5 years
Operating Temperature	Charge Temperature: -20°C to 45°C, Discharge Temperature: -20°C to 45°C
Protection Level	IP54
Noise	≤30 dB

DELTA Pro Ultra Inverter Specifications

Bidirectional Inverter Discharging	AC Output	6900W Total
	X-Boost	No
	UPS	≤20ms
	No-load Consumption	<45W
	Efficiency of AC Output of 100W	70%
	Discharging Efficiency at Full Load	94%
Bidirectional Inverter Charging	Charging Voltage	220V-240V
	AC Input Power Adjustment	Supported, and is adjustable in all charging modes.
	AC Charging Method	AC Input, Power Input/Output Port (AC Charging Pile)
	AC Charging Input	220-240V~30A 50/60Hz 6900W Max
AC Charging	C20 Charging	EU/UK: 220-240V~12.5A 50/60Hz AU:220-240V~10A 50/60Hz
	Protection	Protection from Lightning and Surges
DC Output	USB-A *2	5V, 2.4A, 12W *2
	USB-C *2	5V, 9V, 12V, 15V, 20V, 5A, 100W Max *2
	Anderson Port	12.6V, 30A, 378W Max
MPPT	High Voltage PV	80-450V, 15A, 4000W Max
	Low Voltage PV	30-150V, 15A, 1600W Max
Power Input/Output Port	Parallel Connection	Not supported
	Grid-tie	Not supported

DELTA Pro Ultra Battery Specifications

Battery Capacity	6144Wh, 102.4V, 32S3P
Battery Chemistry	LFP
Cell Specs	20Ah, 3.2V
Cell Efficiency	AC full loading ≥95%
Operating Temperature	Charging Temperature: -20°C-45°C (Turn on self-heating below 0°C, no derating below 40°C) Discharging Temperature: -20°C-45°C
Battery Heating	Yes (automatically start below -20°C)
Battery Balance	Automatic control of the charging/discharging limit of each battery pack
Protection	Over Temperature Protection Low Temperature Protection Over Voltage Protection Low Voltage Protection Overload Protection Short Circuit Protection Overcurrent Protection

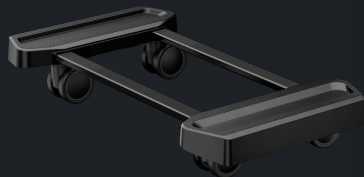
What's in the box?

Inverter Box

EcoFlow DELTA Pro Ultra Inverter



EcoFlow Portable Stand



EcoFlow Solar to Low-PV Port Charging Cable



EcoFlow Disassembly and Assembly Tool



EcoFlow AC Charging Cable



What's in the box?
Battery Box

EcoFlow DELTA Pro Ultra Battery



Battery Connection Cable (0.2m)

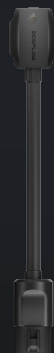


Optional Component

EcoFlow Trolley



EcoFlow EV X-Stream Adapter



EcoFlow Fixing Metal Tab



**It is not sold separately; users can get it by purchasing three or more batteries.*



ECOFLOW