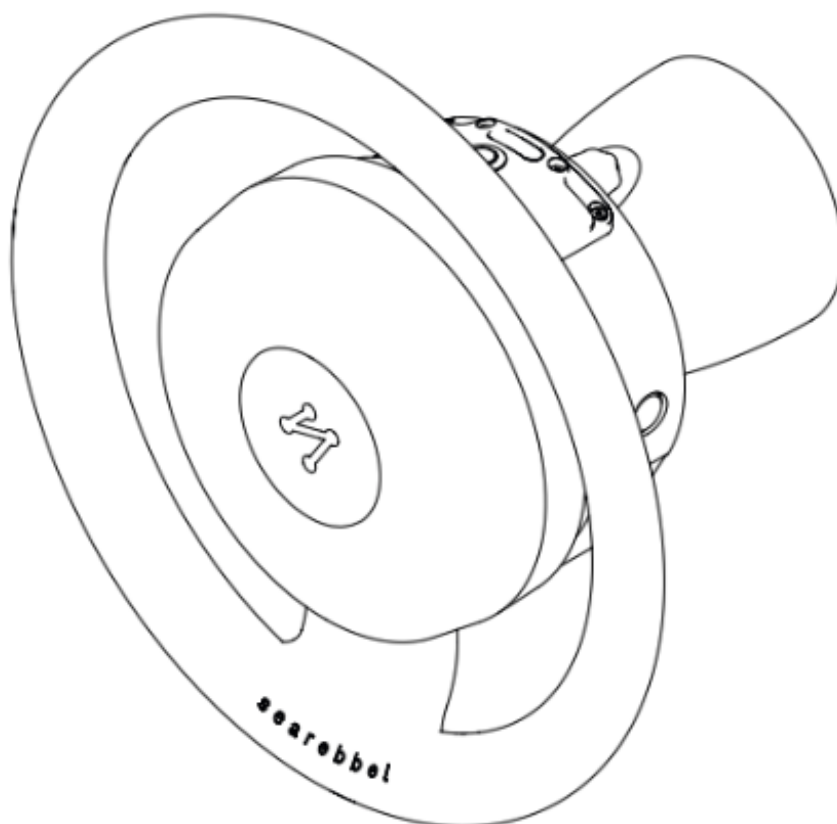




ANNEX I: MOBILEPILOT - NMEA2000



1. Additional Module Configuration and Installation.....	2
2. MobilePilot - Actisense W2K-1 Connection.....	3
3. Set Route from Your Display.....	5
4. Switching Back to Searebbel App Routes.....	6



MobilePilot to NMEA2000 connection

This annex explains how to connect the Searebbel MobilePilot to an NMEA2000 network so users with onboard displays can set and follow routes directly from their displays.

⚠ Important: Heading and waypoint routes can be followed from the display. However, Searebbel does not guarantee that autorouting functions will work with the MobilePilot.

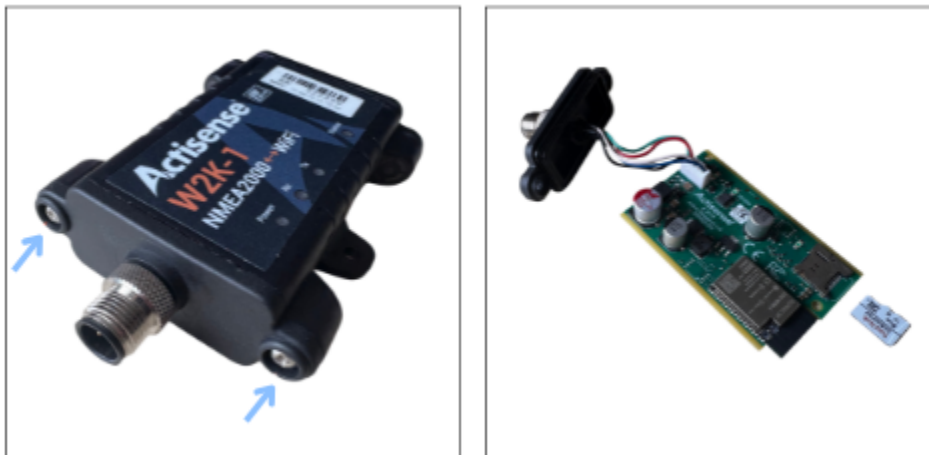
Users may choose to set routes from the Searebbel app or from their onboard display by respectively disabling or enabling this feature.

1. Additional Module Configuration and Installation

To connect the MobilePilot to NMEA2000, you will need the Actisense W2K-1 NMEA2000–Wi-Fi converter.

At this time, Searebbel is only compatible with this module. It requires a prior configuration — please contact your official distributor or seller to obtain a pre-configured module.

1. Open the Actisense W2K-1 by unscrewing the two visible screws.
2. Extract the internal electronics and take out the SD card.



3. Insert the SD card into your computer and replace the entire config folder with the one provided in the [config.zip](#) file (link supplied by Searebbel):

<https://drive.google.com/file/d/19FW5il4RLp4p76gSmcdTWq9ICBqn1Ol6/view>



ANNEX I: HOW TO CONNECT MOBILEPILOT TO NMEA2000

4. Reinsert the SD card and reassemble the module.
5. Check the Wi-Fi SSID and password on the back of the module. Keep this information at hand, as it will be needed for the setup.



When the module has been configured, proceed to wire the Actisense W2K-1 module to the NMEA2000 network of the boat.

Note that the provided configuration is *not* compatible with NMEA-183. If needed, seek assistance from your distributor.

Ensure the module connects to MobilePilot successfully before and after installation.

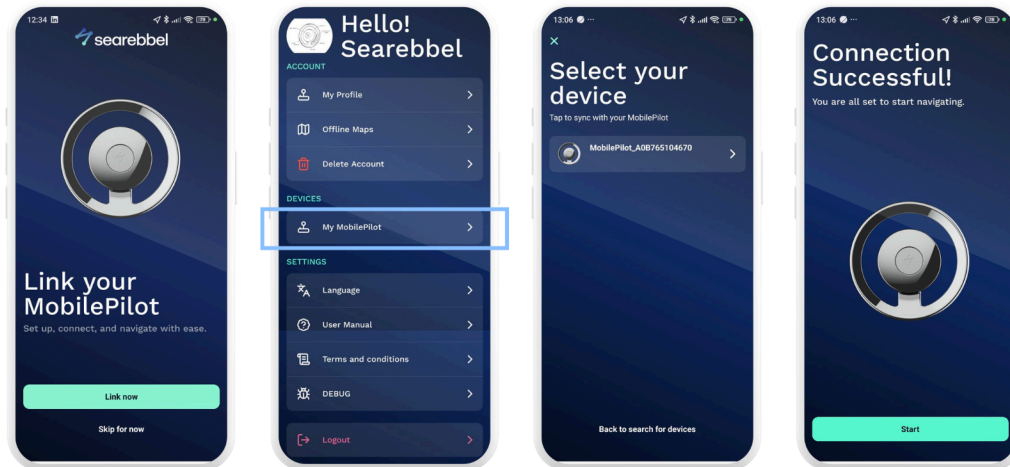
2. MobilePilot - Actisense W2K-1 Connection

2.1 Connect the MobilePilot to Searebbel app:

1. Download and install the Searebbel app (if not already installed).
2. Switch on MobilePilot (LED should display red).
3. Ensure Bluetooth (BLE) is enabled on your phone.
4. In the app, go to the *MobilePilot* section in the main menu and tap *Add*.
5. Select your MobilePilot from the list and tap *Continue*.



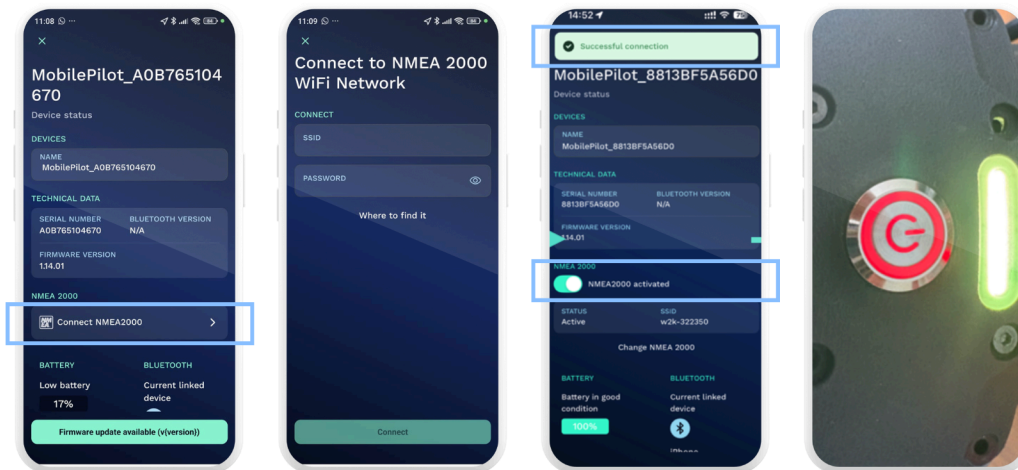
ANNEX I: HOW TO CONNECT MOBILEPILOT TO NMEA2000



6. Open MobilePilot from the menu, select the connected device, and access Settings.

7. Click on *Connect NMEA2000*.

8. Enter the SSID and PASSWORD of the Actisense module (this information can be found on the back of the module), then click on *Connect*.



2.2 Reset

1. Turn off the MobilePilot.

2. Close and reopen the app.

2.3 Confirm NMEA2000 Activation

After the reset, reconnect the app to the MobilePilot. On the main map screen you should now see:

- NMEA2000 Active displayed.






ANNEX I: HOW TO CONNECT MOBILEPILOT TO NMEA2000

- The map screen locked, since the boat display is now used to set routes (routes cannot be drawn from the app when using this feature).



MobilePilot LED status with NMEA2000 active:

LED Color		Status	Possible reason
Yellow		Not ready	The autopilot is not available for activation. Possible causes include being in an enclosed environment, lack of GPS signal, or no movement detected. Note that the system requires movement to be activated.
Blue		Ready	GPS ready, vessel moving (over 3kts)
Green		Active	Autopilot engaged.

3. Set Route from Your Display

This process is carried out after the module installation on the boat and when under normal boating conditions.

1. Turn on the MobilePilot.
2. On your onboard display, set your desired route and select Navigate To (or similar, depending on brand).
3. If the route is correctly received, the MobilePilot LED will turn blue (ready).



4. To start the route:

- Press the autopilot button on the MobilePilot.
- LED will change to green (active).

To stop:

Press the autopilot button again to stop the control or take back manual control of the wheel by forcing it (autopilot disengages).


4. Switching Back to Searebbel App Routes

To return to setting routes from the app:

1. Go to MobilePilot settings in the app.
2. Disable NMEA2000 mode.

Thank you for choosing Searebbel MobilePilot.

For additional support, updates, or detailed documentation, please visit: www.searebbel.com/user-manuals or contact your authorized distributor.

 MobilePilot is an aid to navigation and does not replace the active supervision of the person in command of the vessel.

Safe navigation!