



deeper

MEET CHIRP+ 3

The New Age of Castable Sonars is Here

-  **SHORE FISHING**
-  **BOAT / KAYAK FISHING**
-  **ICE FISHING**
-  **FISHING ROD**
-  **FLOAT TUBE**
-  **BAIT BOAT**

Because Sometimes You Just Need One More Dimension

Experienced anglers know how important it is to learn everything they can about their favorite lake. That's where 3D personal bathymetry comes in.

Learn about bottom structure, depth, hills and slopes much quicker.

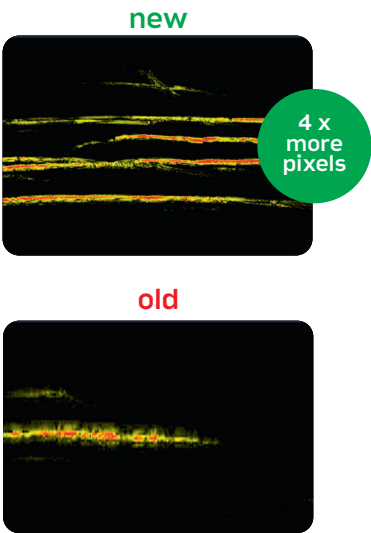


Our Most Advanced Sonar Yet

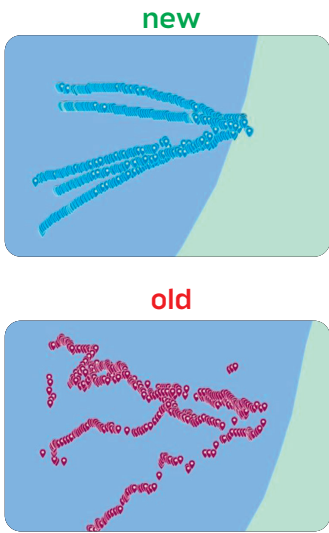
3D personal bathymetry



Better clarity in shallow waters



Higher GPS accuracy



Why CHIRP+ 3?

Great target separation

With an ultra-precise 1 cm (0.4”) target separation, CHIRP+ 3 ensures you can distinguish even the smallest fish from structure or bait clouds. Perfect for pinpointing targets and maximizing your catch efficiency.

3 beam CHIRP technology

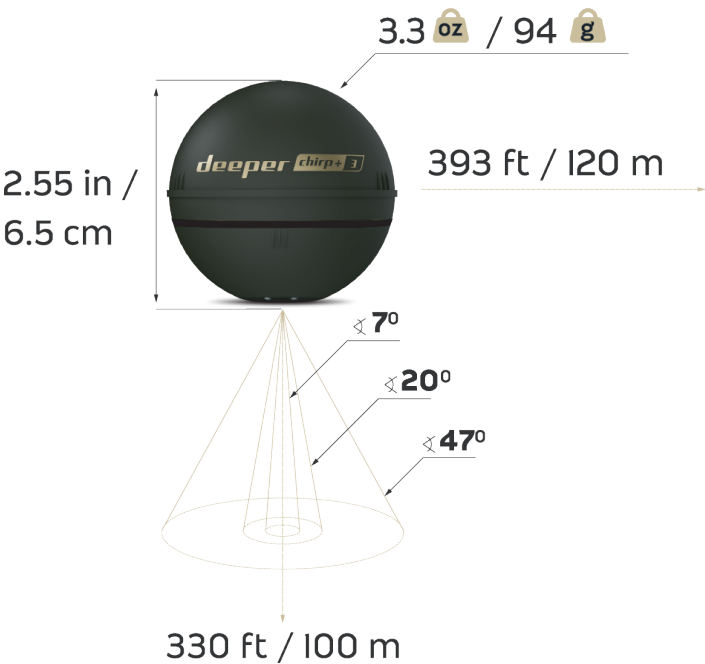
CHIRP+ 3 features three beam frequencies, allowing you to adapt your fishing strategy. Use a wide beam (47°) for quick area scanning, a mid beam (20°) for balanced detail, or a narrow beam (7°) for pinpoint accuracy on structure and fish.

5 year warranty

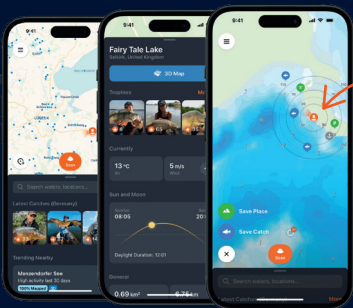
CHIRP+ 3 comes with an amazing 5-year warranty. Unlike most competitors offering just 1–2 years, we stand behind our sonar’s durability—because premium tech should come with premium confidence.

What is chirp?

A traditional sonar sends out a single frequency pulse at a time. A CHIRP (Compressed High Intensity Radiated Pulse) sonar sends out a continuous flow of frequencies, ranging from low to high. Because of this, the sonar readings are much clearer and have a higher resolution compared to traditional sonars.



- See real-time weather conditions before going to location and weather history.
- Use unlimited cloud storage to store your fishing scans and notes.
- Access 2D and 3D global fishing maps database with Premium subscription.



Save your fishiest spots



Fear of Loss? Protect sonar with Premium+ app subscription

Protect your sonar from loss, theft or accidental damage for a monthly price of a coffee cup. As our partner, we commit to providing you with assistance regarding any questions about Premium+.

~50% of potential buyers worry about losing their sonar.



How it Works

- Eligibility - within 60 days after sonar purchase.
- One replacement per subscription per year.
- Deductible fee applied. Check the latest price in-app.
- Hassle-free replacement: no need to return sonar (will be blocked), submit online and get response in 12 hours.

Removing loss concerns makes Deeper sonars easier to sell.



Learn more in-app



Product Tech Specs:

Name	DP6H13S10
Model	ABS
Material	3 beam
SonarType	100 kHz, 47°; 240 kHz, 20°; 675 kHz, 7°
Frequency (Beam Cone)	Max 330 ft/ 100m, Min 0.5 ft/ 0.15 m
Depth Range Max/Min	15 scans per second
Sonar Scan Rate	-20°c to 40° c / -4° F to 104°F
Operating Temperature	Lithium Ion, 3.8V Rechargeable, 1300mAh (typical)
Internal Battery	5V DC; 1.5 A Max
Power Supply Input (for charging battery) Power Adapter (not included in the box, recommended)	Input AC 110V/240V, Output USB A, 5V 2A
Connection Range	394 ft / 120m (depends on OS and smartphone model)
Color	Brown Green
GNSS	GPS, GLONASS, Galileo, BeiDou, QZSS
Product Size	2.55 in / 6.5 cm
Product Weight	3.31 oz / 94 g
Country of Origin	Made in Lithuania
Connection Type	Wireless Wi-Fi connection 802.11 b/g, 2.412GHz 1 channel - 802.11 b max TX power + 20dBm, sensitivity -89 dBm - 802.11 g max TX power + 16dBm, sensitivity -76 dBm

Product Logistic Specs:

Product EAN	4779032950992
Packaging Size	150x150x70 mm
Packaging Weight	0,31 kg
Multipack size	620x310x305mm
QTY per Multipack	32
Harmonized Customs Code	90148000
Country of Origin	Made in Lithuania

LEARN MORE ABOUT THE DEEPER SMART SONAR CHIRP+ 3

 See it in action
on our YouTube channel
www.youtube.com/buydeeper

 Get tips and the latest news
on our Facebook page
www.facebook.com/deepersonar

 Find full product details, reviews
and comparisons on our website
www.deepersonar.com