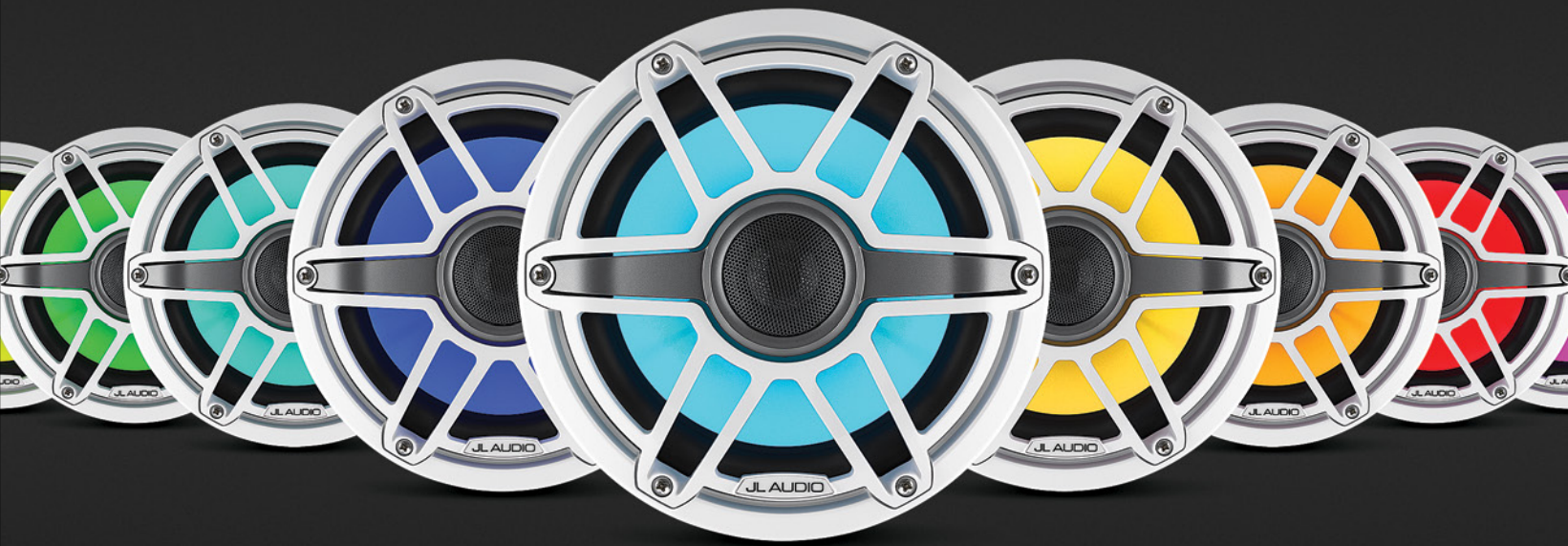




Lit.



M6

JL AUDIO® | How we play.®



# M6



M6 Loudspeakers fulfill JL Audio's commitment to raise the bar with each product generation. The engineering team has completely reinvented the premium marine loudspeaker, with major improvements in performance, precision and durability. Offered in multiple sizes and cosmetic options, most models are also available with a brilliant, new lighting technology.

Choose from three sizes of coaxial loudspeakers: a 6.5-inch designed to fit in standard marine speaker locations, and two oversized designs that deliver even greater performance: a 7.7-inch and an 8.8-inch. Complementing the coaxial offering, the M6 line also includes subwoofer models, in 8-inch and 10-inch nominal diameters and Enclosed Coaxial Systems in 7.7-inch and 8.8-inch diameters.

Our engineering team has optimized all M6 models for open-air boating environments, taking into account the materials around them and the environment they will be operating in. All materials, fasteners and assembly techniques are carefully engineered to ensure reliability and durability in real marine applications, including saltwater exposure. Component parts, materials and complete loudspeakers are subjected to rigorous environmental testing to exceed industry standards for corrosion and UV resistance.

Production of all M6 loudspeakers takes place in JL Audio's Miramar, Florida factory, using global components and materials.

**For specifications and more detailed information, please visit [www.jlaudio.com](http://www.jlaudio.com)**





# Your boat... Your style.

M6 is offered in distinct looks to complement many different boat styles. Two grille designs are available: "Classic", with an all-white slat grille design and "Sport", which features a split-spoke grille design and is available in two color schemes: Gloss White, or a beautiful, Gunmetal/Titanium dual metallic finish. The M6 design lends itself to further customization, with separate trim-ring and grille-insert components.



A beautiful, smooth lighting effect is optional on all M6 coaxials and subwoofer drivers. RGB LED technology allows you to choose from 7 hard-wired colors, or you can precisely customize the color and intensity using an RGB lighting controller (sold separately).





M6 Enclosed Coaxial Speaker Systems are ideal for wakeboard towers or other tubular structures, and can also be mounted to decks and other flat surfaces. Like all JL Audio marine speakers, they are built to withstand intense UV exposure and a real saltwater marine environment, delivering years of listening enjoyment.

The 7.7 and 8.8-inch enclosures are precision-molded from our special marine-grade polymer and feature a decorative, aluminum JL Audio logo cap on the end opposite the speaker. Each is designed to mate with one of our precision-machined clamp systems (sold separately and available to fit a wide range of pipe diameters or surface-mount applications).

All models are available in Gloss White or Satin Black enclosure finishes, with complementary speaker grilles.



#### Designed for Custom-Mounting

For applications with angled pipes, the enclosure is designed to receive the loudspeaker in virtually any angle of rotation for a clean, finished look.



#### ETXv3-CVR

Gray neoprene, zippered cover protects ETXv3 systems during storage and trailering. Available for 7.7-inch and 8.8-inch ETXv3 enclosed loudspeakers. Sold as pairs

JL AUDIO® | How we play.®



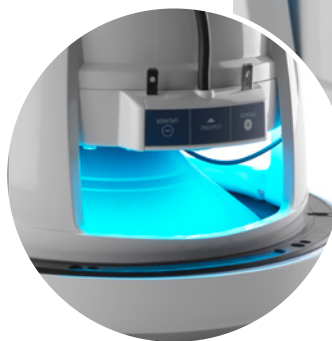




### Coaxial Speaker Technology

Every M6 coaxial loudspeaker starts with a long-excursion woofer designed with JL Audio's proprietary motor, suspension and cone modeling systems to yield superior frequency response, smooth mid-range dispersion and linear performance at all listening levels. JL Audio's acoustics laboratory in Miramar, Florida performs extensive testing on multiple generations of prototypes to refine every design and extract maximum performance.

Since the different size woofers in the M6 coaxials have different upper frequency response limits, each size pairs with its own specially designed, matching silk dome tweeter (0.8, 1.0, or 1.25-inch diameter). Each of these tweeters is precisely tuned via a rear cavity that optimizes its mid-range extension to seamlessly transition with its matching woofer. The result is smooth, evenly dispersed sound throughout the critical crossover region, making the overall sonic presentation clean and clear.



### Transflective™ LED Illumination

Optional on most M6 models is JL Audio's Transflective™ LED technology. By emitting light from multiple LEDs through our specially engineered cone material, this patent-pending breakthrough delivers a beautiful cone illumination effect, with no hot spots or reflections on the cone surface.

Choose from seven fixed lighting colors or control the color and intensity of the lighting actively using a lighting controller accessory (sold separately). Separate 12V wiring is required to power the illumination.



### Crossover Technology

Crossover networks are a critical part of the M6 coaxial speakers' acoustic design and are considerably more sophisticated than those used in most marine coaxial speakers. The M6-650X employs a 1st order low-pass and 2nd order high-pass filter, while the M6-770X and M6-880X apply a 2nd order low-pass and 3rd order high-pass filter. Each crossover network also employs an electronic tweeter protection circuit to minimize the possibility of tweeter failure.

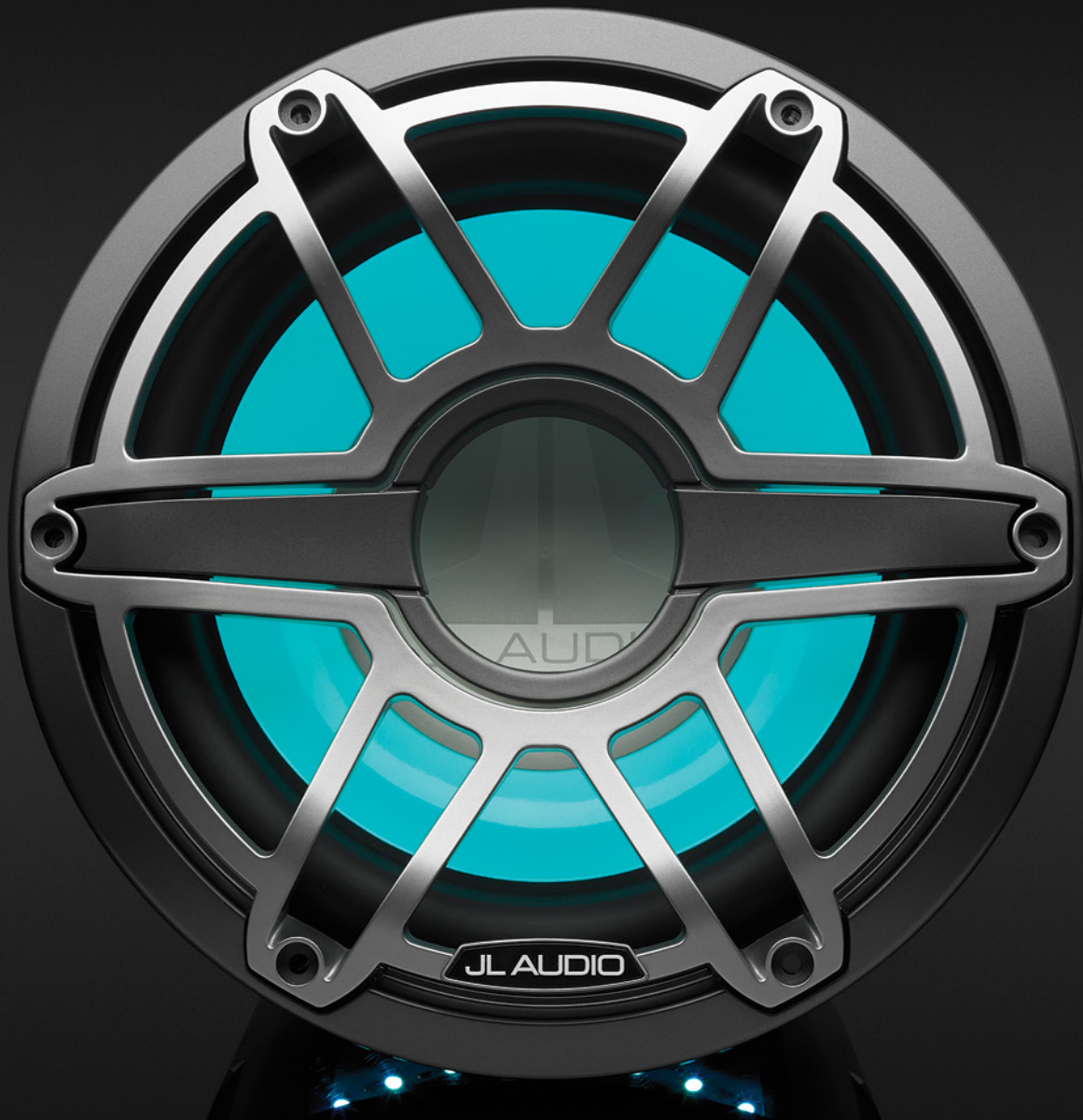
The multiple components required in these crossovers are laid out on a ring-shaped circuit board that is built into each speaker's terminal assembly, ensuring that the crossover is secure and protected from the elements.



### Subwoofer Technology

Offered in 8-inch and 10-inch diameters, M6 subwoofers continue JL Audio's tradition of building low-frequency drivers that impress, not only with their output capability, but also with the quality and balance of their sound. FEA-optimized motor and suspension designs are optimized for infinite-baffle installation (IB models), or for installation into small sealed enclosures (W models). Choose the right one for your application and it will reward you with powerful, low-distortion sub-bass that takes your marine audio experience to a higher level.





JL AUDIO® | How we play.®



[www.jlaudio.com](http://www.jlaudio.com)

10369 North Commerce Parkway • Miramar, Florida • 33025 • USA



"How we play.", "Ahead of the Curve", "JL Audio" and the JL Audio logo are registered trademarks of JL Audio, Inc.  
"M6" and their respective logos are trademarks of JL Audio, Inc.

©2019 JL Audio, Inc. • For more detailed information please visit us online at [www.jlaudio.com](http://www.jlaudio.com). Due to our policy of continuous product development, all specifications are subject to change without notice.

MOBILE AUDIO

MARINE AUDIO

POWERSPORTS

HOME AUDIO