

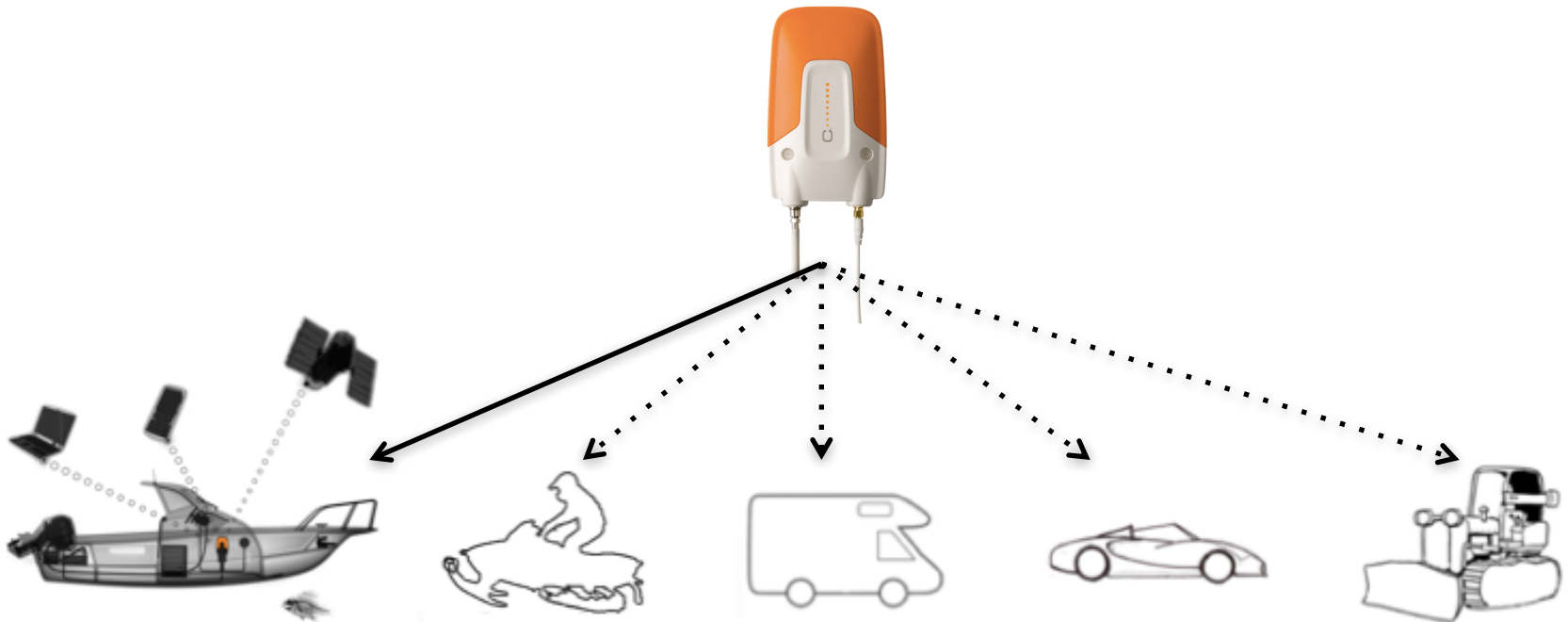
c-pod™  
SECURITY SYSTEMS



# C Security Systems

C Security Systems is based in Stockholm, Sweden with expertise in the areas of mobile communications and positioning technologies. The firm is a public company and markets, sells and develops the product C-pod.

C-pod allows tracking and alarms in case of break-ins and/or environmental hazards for boats, snowmobile, jet skis, ATVs, cars and trucks.



# Products & Services

## OWN PRODUCTS

### C-pod (main unit)

#### Features

- GPS tracking
- GSM communication
- Voltage monitoring
- SMS/E-mail alarms

### Smartphone app

- iPhone
- Android
- Windows

### Sensors

- Fire- sensor
- Motion- sensor
- Water- sensor
- Temperature- sensor
- Door/hatch- sensor
- Outboard/Dinghy- sensor
- Siren
- Relay [turn electronics on/off remote]

## SERVICE

Fixed price

Lower insurance premium in France, Sweden and Russia.

Free technical support (9-17 CET)

Automatic online upgrades.

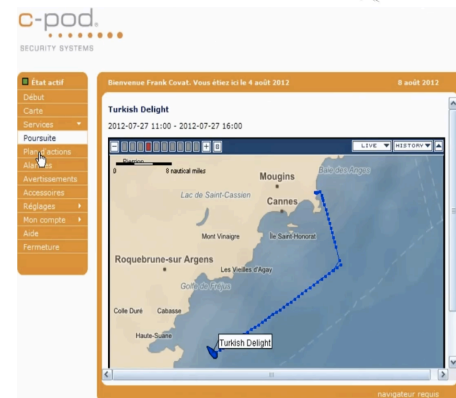
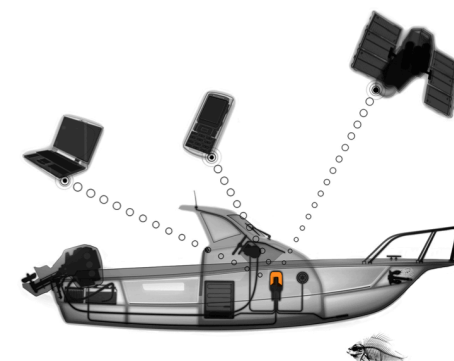
Unlimited global coverage.

Warns if the system goes off- line

Smartphone application

Personal web portal

Multiple vessles monitoring



# C-pod Features

C-pod to survey a number of functions onboard your boat at home from a computer, smartphone or from a reading pad.

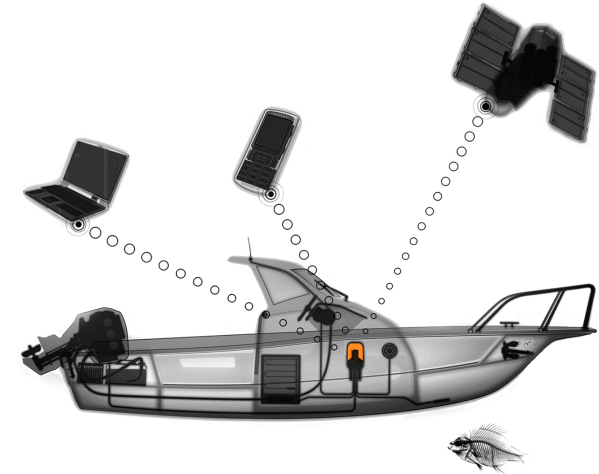
The system permits over 10 different alarm receivers to get alerts by email or text message. The communication between the end user and the boat are routed over our central servers. This enables each owner to monitor if:

- \* The boat is being moved
- \* Someone breaks-in
- \* The boat's batteries are losing power
- \* There's fire/smoke on board
- \* The boat is taking on water

Regardless if you are on board or not you can monitor your boats:

- \* Live position around the world
- \* The historical data of the boats route
- \* Battery voltage
- \* Speed and heading

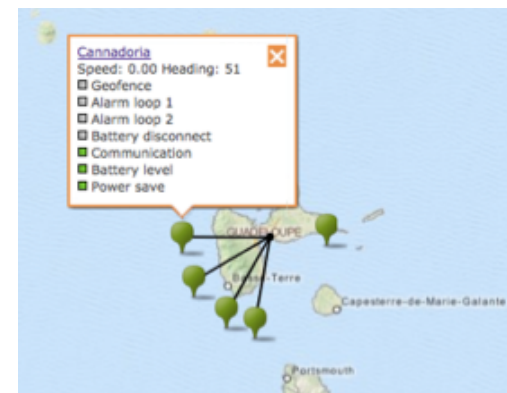
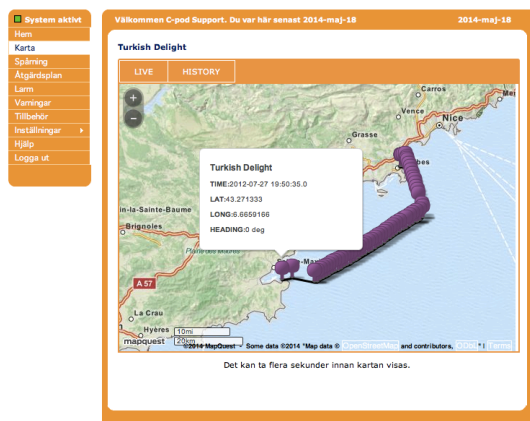
In addition to these functions you can activate (or deactivate) electronic equipment onboard your boat.



# The perfect unit for Professionals

C-pod will suit the needs of professional with its wide range of accessories and its fleet interface.

- View and control the historical data where the boat(s) have been.
- Follow your boats positions live around the world
- Manage the vessel quickly through our smartphone App (iPhone, Android & Windows)
- Use the fleet which allows professionals to monitor multiple vessels represented on a single map. It's a great feature for chartered boats and marinas.



## C-POD BASE PACKAGE

### Features

- Geofence guards your boat's position
- Monitoring of your boat's batteries
- Magnetic sensor (alarm sensor for door or hatch)
- 48 hours of self-sustained tracking on backup battery
- Personal web portal ([www.mycpod.com](http://www.mycpod.com))
- Control via your mobile phone (GSM and CDMA)
- Alarms sent as text messages (SMS) or as e-mails
- Worldwide service for optimum security\*

### Included in the box

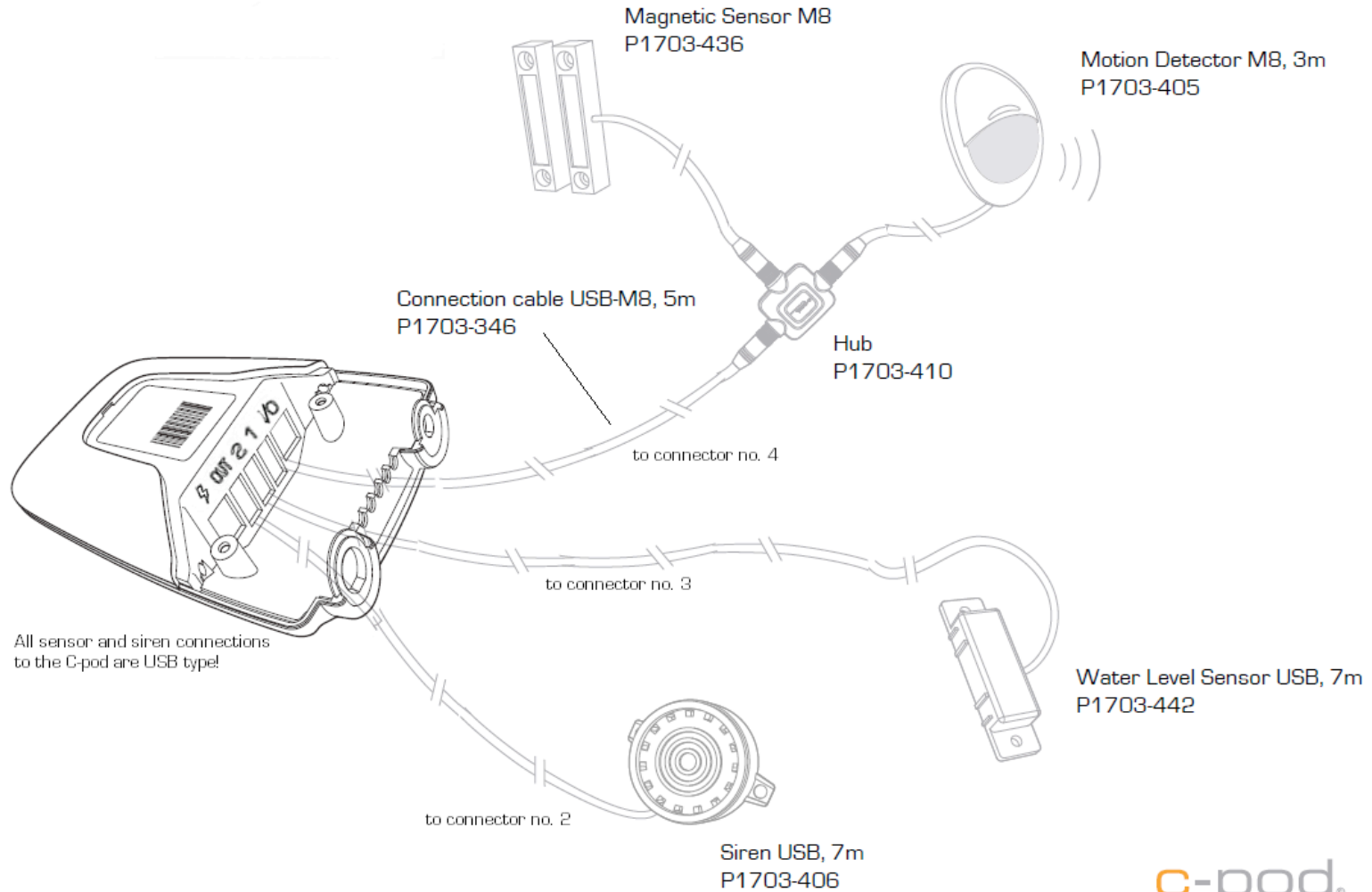
- C-pod unit with built-in SIM card and backup battery
- GSM antenna
- GPS antenna with 3m cable for hidden installation
- Power cable, 10m
- Magnetic intrusion sensor for door or hatch, 6m cable
- Alarm activation button with LED indicator
- Twist-to-secure fastener
- User Guide

### **\*Service plan not included**

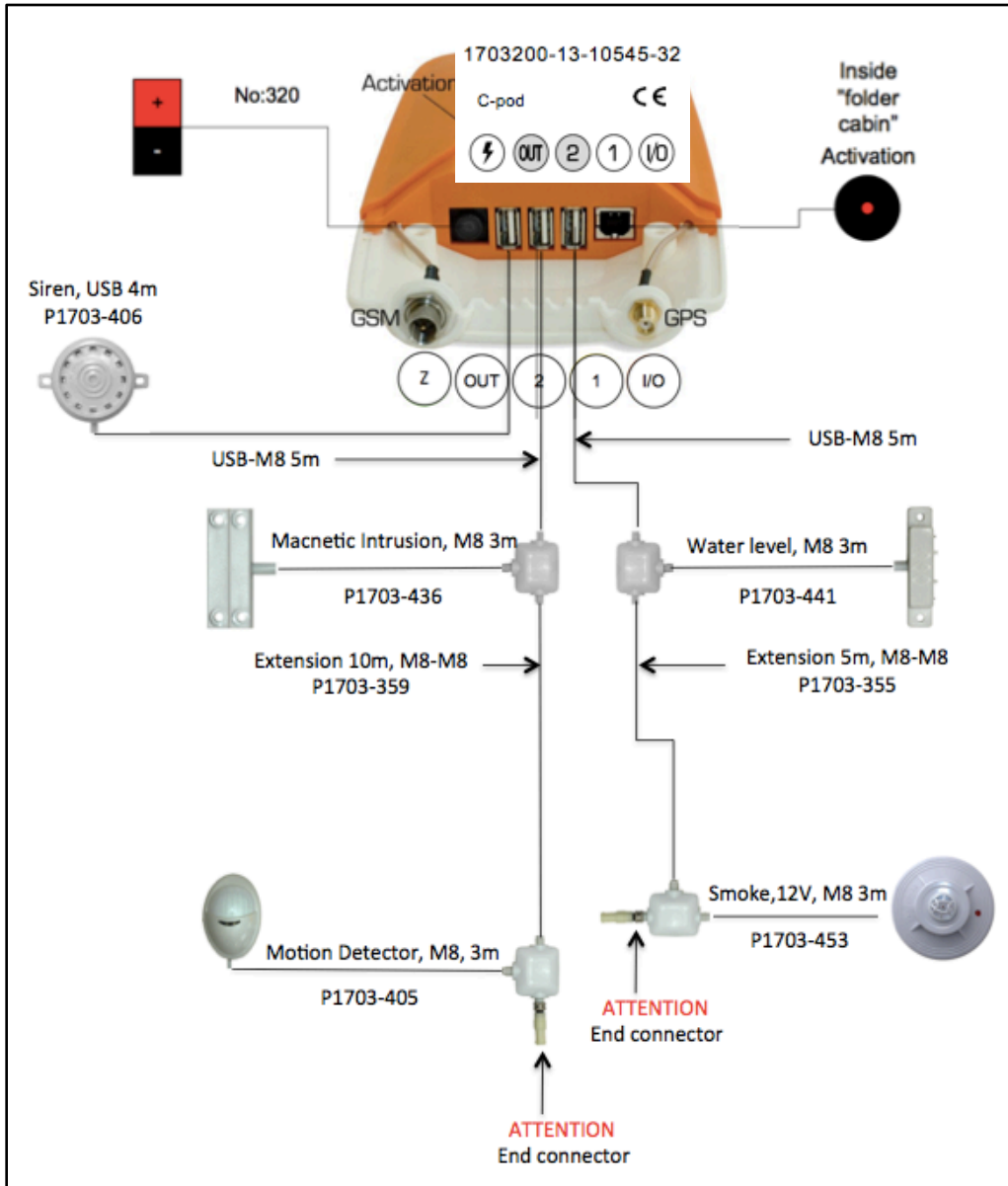
- Monthly, 12-months, 24-months
- Costs between €12,45 – €16,95 per month



# C-pod is a flexible system



# C-pod is a flexible system





Bienvenue C-pod Support. Vous étiez ici le 9 sept. 2015
9 sept. 2015

État actif

Début

Carte

Poursuite

Plan d'actions

Alarmes

Avertissements

Accessoires

Réglages ▶

Aide

Fermeture

### Turkish Delight

Bienvenue sur le portail de votre bateau ! Cette page contient une vue d'ensemble de l'état récent de votre bateau. Cliquez sur les options disponibles dans le navigateur à gauche de la fenêtre pour obtenir plus de renseignements sur votre bateau, pour configurer le système et pour activer ou désactiver l'alarme. Pour mettre à jour l'information, cliquez sur Obtenir état.



Modifiez l'image de votre bateau »



Cliquez sur la carte pour zoomer et balayer la carte »

Voir sur Google Maps »

Cliquez ici pour recevoir les données actuelles d'état de votre bateau par votre C-pod.

**Dernier état connu**

Lat. :	43°35.26' N
Long :	07°07.38' E
Cap :	Non disponible
Vitesse :	0 nœuds
Batterie externe:	13.0V

**Alarme**

Geofence	<input checked="" type="checkbox"/> Active
Boucle d'alarme 1	<input checked="" type="checkbox"/> Active
Boucle d'alarme 2	<input checked="" type="checkbox"/> Active
Batterie déconnectée	<input checked="" type="checkbox"/> Active

**Avertissements**

Connexion	<input checked="" type="checkbox"/> OK
-----------	--

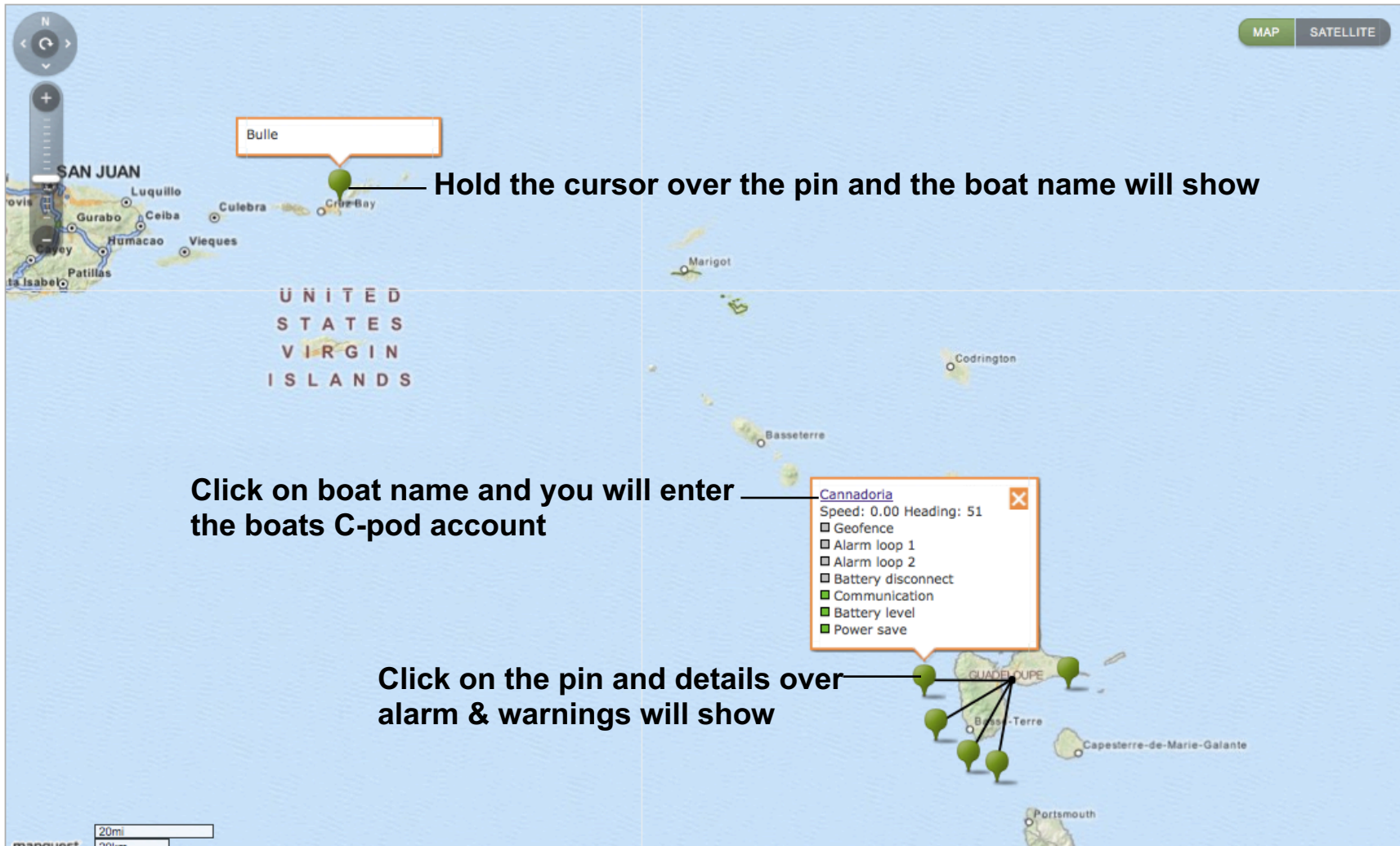
# Fleet interface for multiple vessels monitoring



Takes you to a view where you can see the whole fleet



Log out





Log out

**My Way**  
Speed: 0.00 Heading: 38

- Geofence
- Alarm loop 1
- Alarm loop 2
- Battery disconnect
- Communication
- Battery level
- Power save

MAP SATELLITE

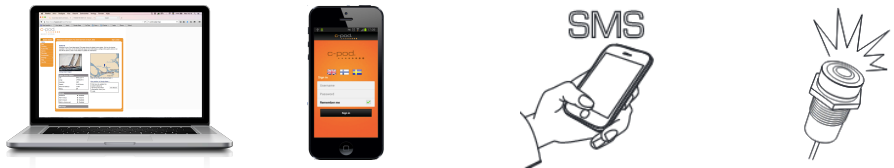
Marina Torvis Club

Rue du Fort Union

Terrasse de la Digue

Lot Fort Union

200ft  
60m



	Laptop	Smartphone	SMS	Sensor
System On/Off	✓	✓	✓	✓
Manage alarms	✓	✓		
Manage warnings	✓	✓		
Position in mapview	✓	✓	✓	
External Battery voltage	✓	✓	✓	
Internal battery voltage	✓	✓		
Alter voltage warning levels	✓			
Personal settings	✓			
View tracking & history	✓			
View in Googel map	✓			
Add alarm recipients	✓			
Register/add alarm sensors	✓			
Fleet mapview	✓			
Position via SMS			✓	
Status via SMS			✓	
Turn relay on or off			✓	
Troubleshooting the C-pod				✓



MAIL: [customerservice@c-pod.com](mailto:customerservice@c-pod.com)  
TEL: +46 8 5000 10 10  
WEB: [www.c-pod.com](http://www.c-pod.com)

# GPS tracking system & GSM communication

