



# KVH SERVICE PLANS

## Starlink Global Priority Service

Available with any Starlink Antenna

### Considering Starlink for your connectivity?

Choose KVH and enjoy Starlink’s speed and affordability, KVH’s 24/7/365 live global service and support, a robust management app, concierge-level customer service, enhanced control, and the benefits of KVH’s advanced, integrated services for security, connectivity, and versatility.

KVH offers packages tailored to your needs and budget, ensuring the best performance for your Starlink Global Priority service, which is **Ideal for maritime and global connectivity, with coverage across all Starlink service areas.**

### Select Your Global Priority Starlink Service Plan

| Monthly Data Plans                           | \$/month (USD) | Monthly Allowance | Overage Options*   |
|--|----------------|-------------------|--|
| Starlink 50 GB Global Priority               | \$250          | 50 GB             | <p><b>Once the monthly data allowance is consumed:</b></p> <p><b>Per-GB Overage</b></p> <ul style="list-style-type: none"> <li>\$2/GB when opted-in until the data allowance resets on the first day of each month.</li> </ul> <p>..... OR .....</p> <p><b>Top-Up Overage</b></p> <ul style="list-style-type: none"> <li>Add data in 25 GB/\$50 or 250 GB/\$400 increments.</li> <li>When opted-in, top-ups continue automatically as needed.</li> <li>Top-up sizes can be adjusted at any time during the month in KVH Manager.</li> <li>Unused data does not roll over.</li> <li>If opted-out, data speeds will decrease to 1 Mbps/0.5 Mbps (down/up*) for the rest of the month.</li> </ul> |
| Starlink 100 GB Global Priority              | \$350          | 100 GB            |  |
| Starlink 300 GB Global Priority              | \$600          | 300 GB            |  |
| Starlink 600 GB Global Priority              | \$850          | 600 GB            |  |
| Starlink 1 TB Global Priority                | \$1,150        | 1 TB              |  |
| Starlink 2.5 TB Global Priority <sup>1</sup> | \$3,000        | 2.5 TB            |  |
| Starlink 5 TB Global Priority <sup>1</sup>   | \$5,150        | 5 TB              |  |
| Starlink 10 TB Global Priority <sup>1</sup>  | \$10,150       | 10 TB             |  |
| Starlink 15 TB Global Priority <sup>1</sup>  | \$15,150       | 15 TB             |  |
| Starlink 25 TB Global Priority <sup>1</sup>  | \$25,150       | 25 TB             |  |

<sup>1</sup> Supports dual Starlink terminal/single service plan configuration. This configuration will only be charged one TAC fee.

Service requires a One-time Activation Fee of \$200

\*Opt-in or opt-out of overages in KVH Manager, or by contacting [airtimeservices@kvh.com](mailto:airtimeservices@kvh.com) 24/7/365

### Select a KVH Starlink Global Priority OneCare® Plan

KVH Starlink subscribers are required to select a Global Service and Support Package with their data service plan

| Benefits   | Essential \$49/mo | Standard \$169/mo | Premier \$349/mo | Premier+ \$549/mo |
|--|-------------------|-------------------|------------------|-------------------|
| 24x7/365 Tier 1 Technical Support                                | X                 | X                 | X                | X                 |
| Third-party Warranty Administration                              | X                 | X                 | X                | X                 |
| Service Event Scheduling & Coordination                          |                   | X                 | X                | X                 |
| Warranty Labor <sup>2</sup>                                      | X                 | X                 | X                | X                 |
| Access to KVH’s Unit In Advance Program <sup>4</sup>             | X                 | X                 | X                | X                 |
| VIP Prioritized Technical Support & Airtime Services Phone Queue |                   |                   | X                | X                 |
| Tech Support Email and Case Prioritization                       |                   |                   | X                | X                 |
| Airtime Services Email and Case Prioritization                   |                   |                   | X                | X                 |
| Technician Travel <sup>3</sup>                                   |                   |                   |                  | X                 |
| Extended Warranty (parts & onboard labor) <sup>2</sup>           |                   |                   |                  | X                 |
| Two-way Economy Air Freight                                      |                   |                   |                  | X                 |

<sup>2</sup> Up to four (4) hours

<sup>3</sup> KVH standard terms and conditions apply

<sup>4</sup> At KVH’s discretion

No OneCare or Service Plan charges are incurred during pause periods.

# Starlink Global Priority Service

## Activate Your Starlink

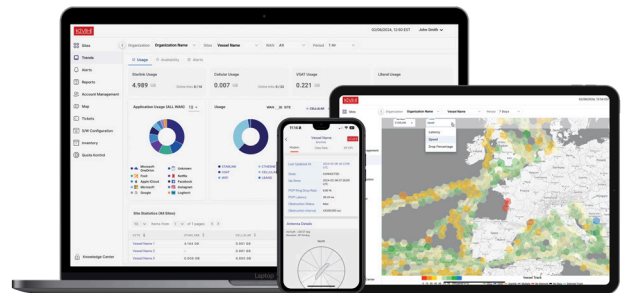
Scan the QR code or go to [kvh.com/activate-starlink](https://kvh.com/activate-starlink) for simple, self-service activation with step-by-step instructions and a video walkthrough. KVH Starlink antennas are locked to KVH for service.



## Other Benefits of Activating Your Starlink Service with KVH:

- Monthly service is billed in arrears
- A complete Starlink Solution with kits, mounts and accessories in stock for same-day shipping
- Monthly billing starts when you choose to activate, not when your Starlink kit ships
- KVH subscribers have access to **KVH Manager**, a powerful, secure suite of tools designed to help you take full control of your connectivity. The intuitive platform offers advanced features such as data usage reporting, text and email alerts for usage, opt-in or

opt-out of overages, billing and terminal information, daily billed usage, network status, position, telemetry and real-time tracking, to enhance operational efficiency.



## Consider Expanding Your Starlink Capabilities with:

### KVH Value-added Services

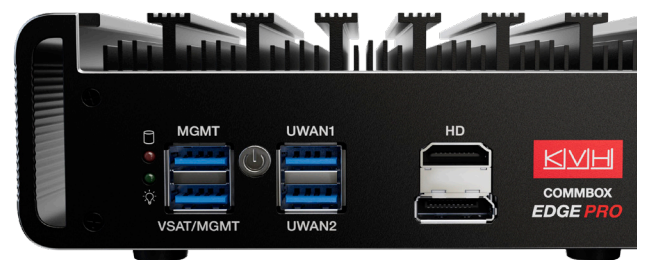
Ask us about our great value-added services to take full advantage of your Starlink system, including:

- Get crystal-clear voice calling when you add a KVH multimedia terminal adapter (MTA) (KVH p/n 19-1191) and as many as two VoIP lines. Plus, you can also add as many as ten virtual local numbers (five per line).
- For commercial vessels, promote crew wellbeing with premium digital entertainment and daily news when you bring the KVH linkHUB media player onboard.
- Sign up for a public IP for enhanced networking.

### KVH CommBox™ Edge Ecosystem

Take control of your Starlink with KVH's CommBox Edge ecosystem, offering multiple powerful network and bandwidth management solutions.

Visit [kvh.com/edge](https://kvh.com/edge) for more information.



Contact [sales@kvh.com](mailto:sales@kvh.com) for Pricing

### General Terms

- All prices are in \$USD and do not include any taxes or fees that may apply.
- All services and plans are subject to the KVH Master Services Agreement.
- No annual contract for purchased equipment; rate plans are month-to-month, automatically renewing on a monthly basis. For leased terminal equipment, the contract term must be concurrent with, and extend to, the end of the lease period.
- For complete details on plan changes, see "Airtime Rate Plan Change/Suspension Policies" at [kvh.com/airtimeresources](https://kvh.com/airtimeresources).
- First voice line with a KVH-assigned phone number is \$49/month; the second \$39/month. User-specified voice line phone numbers are \$70/month. Voice calling requires a KVH MTA.
- Virtual local phone numbers can be added for a monthly fee of \$39 per number (5 max. per voice line) where available/subject to in-country regulations.
- Both incoming and outgoing calls are charged at \$0.68/minute. A few select countries and satellite phone services are blocked. Contact KVH Airtime Services for special rates for these areas and services.

[kvh.com/starlink](https://kvh.com/starlink)

Visit [kvh.com/offices](https://kvh.com/offices) for regional headquarters and sales locations and contact details.

